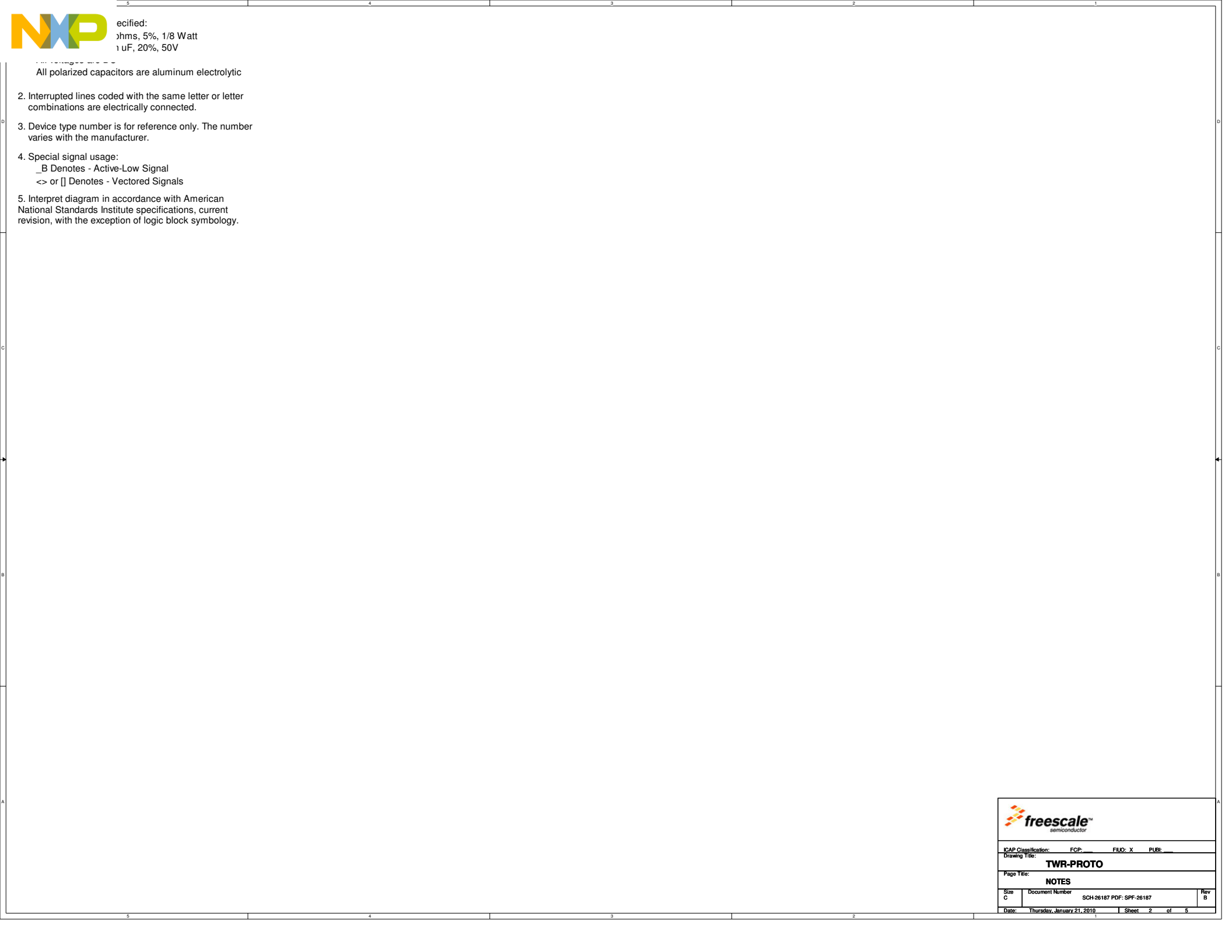




Contents	
	VATOR
	EVATOR
	PINS

Revisions			
Rev	Description	Date	Approved
X1	Initial Draft	08/13/09	Michael Norman
A	Production Release	08/25/09	Michael Norman
A1	Adding silkscreen marking for for the primary elevator connector Adding net: ELE_PS_SENSE_2	01/13/2010	Michael Norman
B	Production Release	01/21/2010	Michael Norman

		Microcontroller Solutions Group 6501 William Cannon Drive West Austin, TX 78753-8508	
This document contains information proprietary to Freescale Semiconductor and shall not be used for engineering design, procurement or manufacture in whole or in part without the express written permission of Freescale Semiconductor.			
Designer: Dafné Sánchez		ICAP Classification: FCP: FILE: X PUBL	
Drawn by: Dafné Sánchez		TWR-PROTO	
Approved: Michael Norman		TITLE PAGE	
Size C	Document Number SCH-26187 PDF: SPF-26187	Rev B	
Date: Thursday, January 21, 2010		Sheet 1 of 5	



pecified:
 ohms, 5%, 1/8 Watt
 1 uF, 20%, 50V

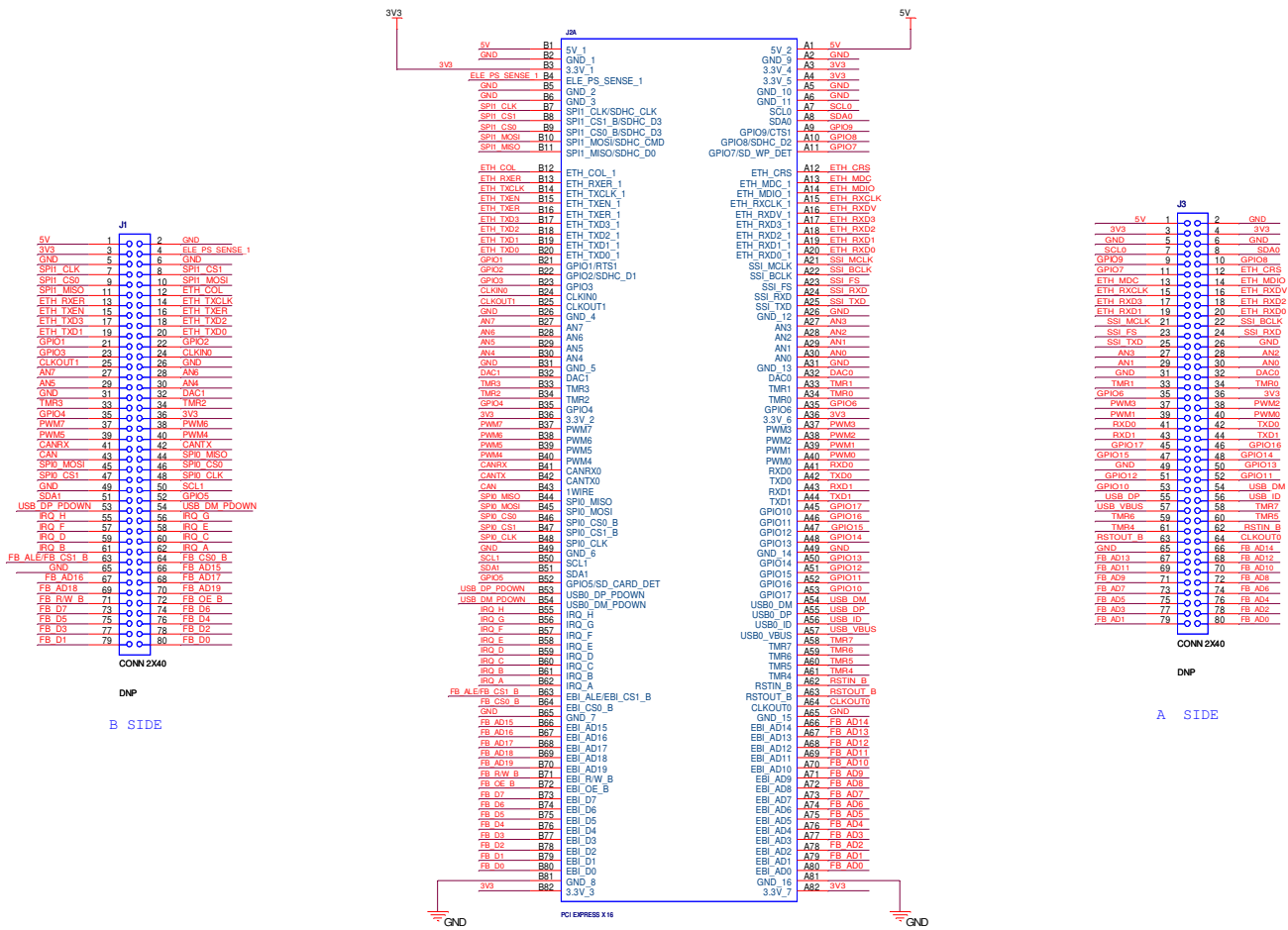
All polarized capacitors are aluminum electrolytic

2. Interrupted lines coded with the same letter or letter combinations are electrically connected.
3. Device type number is for reference only. The number varies with the manufacturer.
4. Special signal usage:
 _B Denotes - Active-Low Signal
 <> or [] Denotes - Vectored Signals
5. Interpret diagram in accordance with American National Standards Institute specifications, current revision, with the exception of logic block symbology.

ICAP Classification: FCP: FMO: X PUBL:		
Drawing Title: TWR-PROTO		
Page Title: NOTES		
Size C	Document Number SCH-26187 PDF: SPF-26187	Rev B
Date: Thursday, January 21, 2010	Sheet 2 of 5	



PRIMARY ELEVATOR



freescale
semiconductor

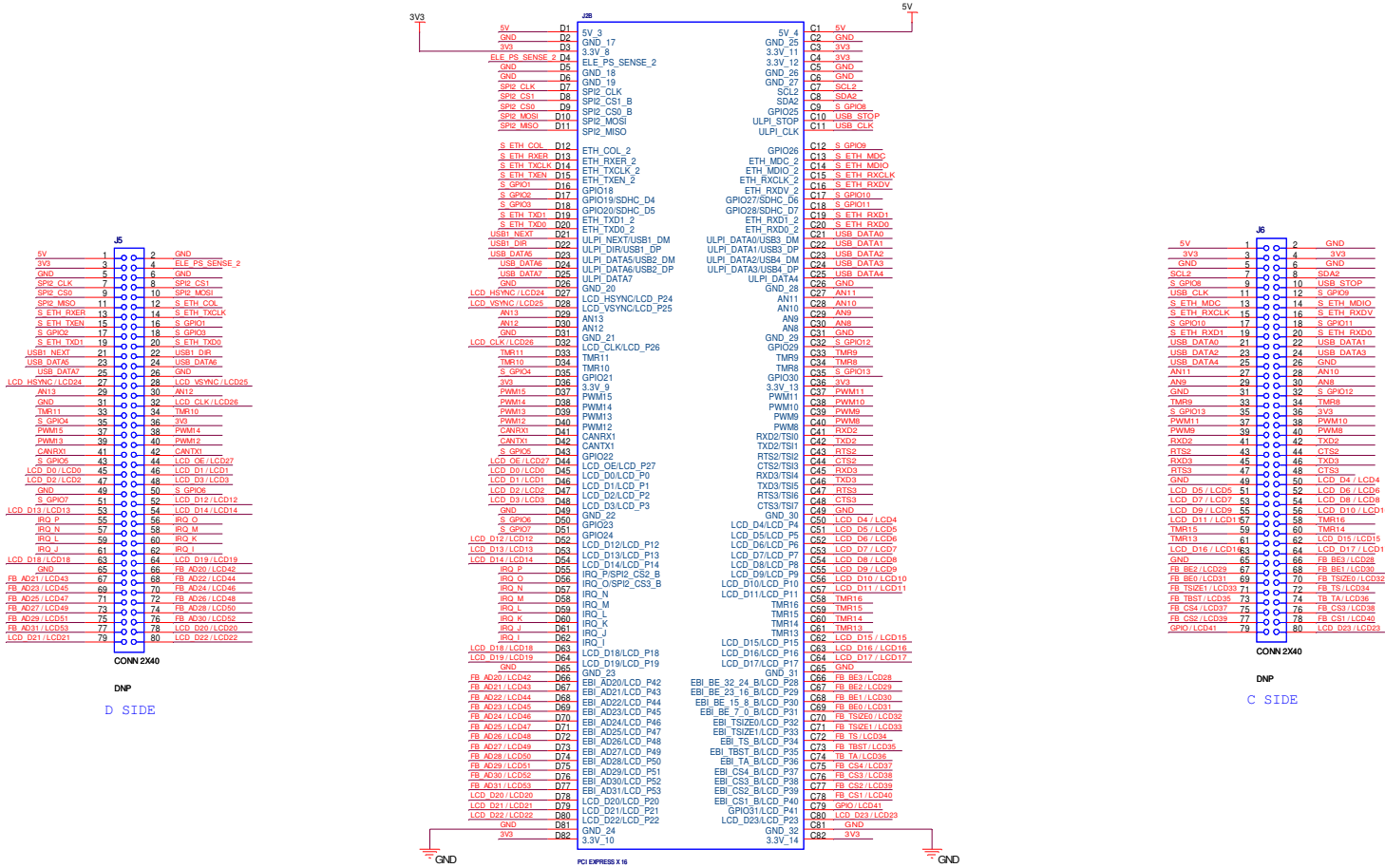
ICAP Classification: FCP, FUD: X, PUB:
 Drawing Title: **TWR-PROTO**

Page Title: **PRIMARY ELEVATOR**

Size C	Document Number SCH-26187 PDF: SPF-26187	Rev B
Date: Thursday, January 21, 2010	Sheet 3 of 5	



SECONDARY ELEVATOR



freescale
semiconductor

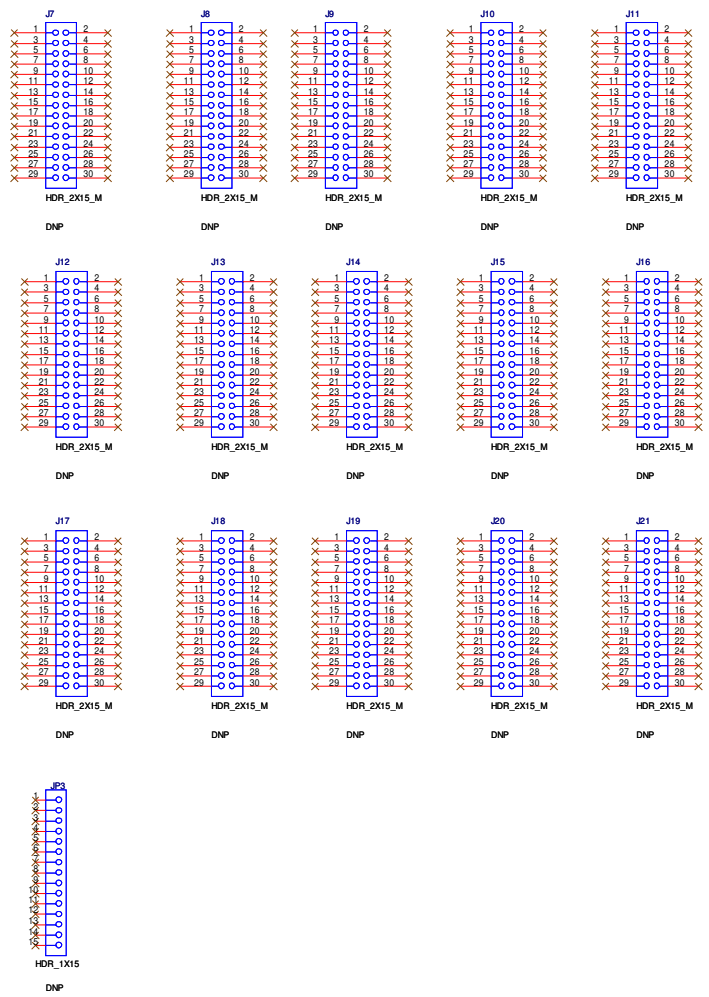
ICAP Classification: FCP, FUD: X, PUB:
 Drawing Title: **TWR-PROTO**

Page Title: **SECONDARY ELEVATOR**

Size C Document Number SCH-26187 PDF: SPF-26187 Rev B

Date: Thursday, January 21, 2010 Sheet 4 of 5

PROTOTYPING PINS



POWER / GND ACCESS

