



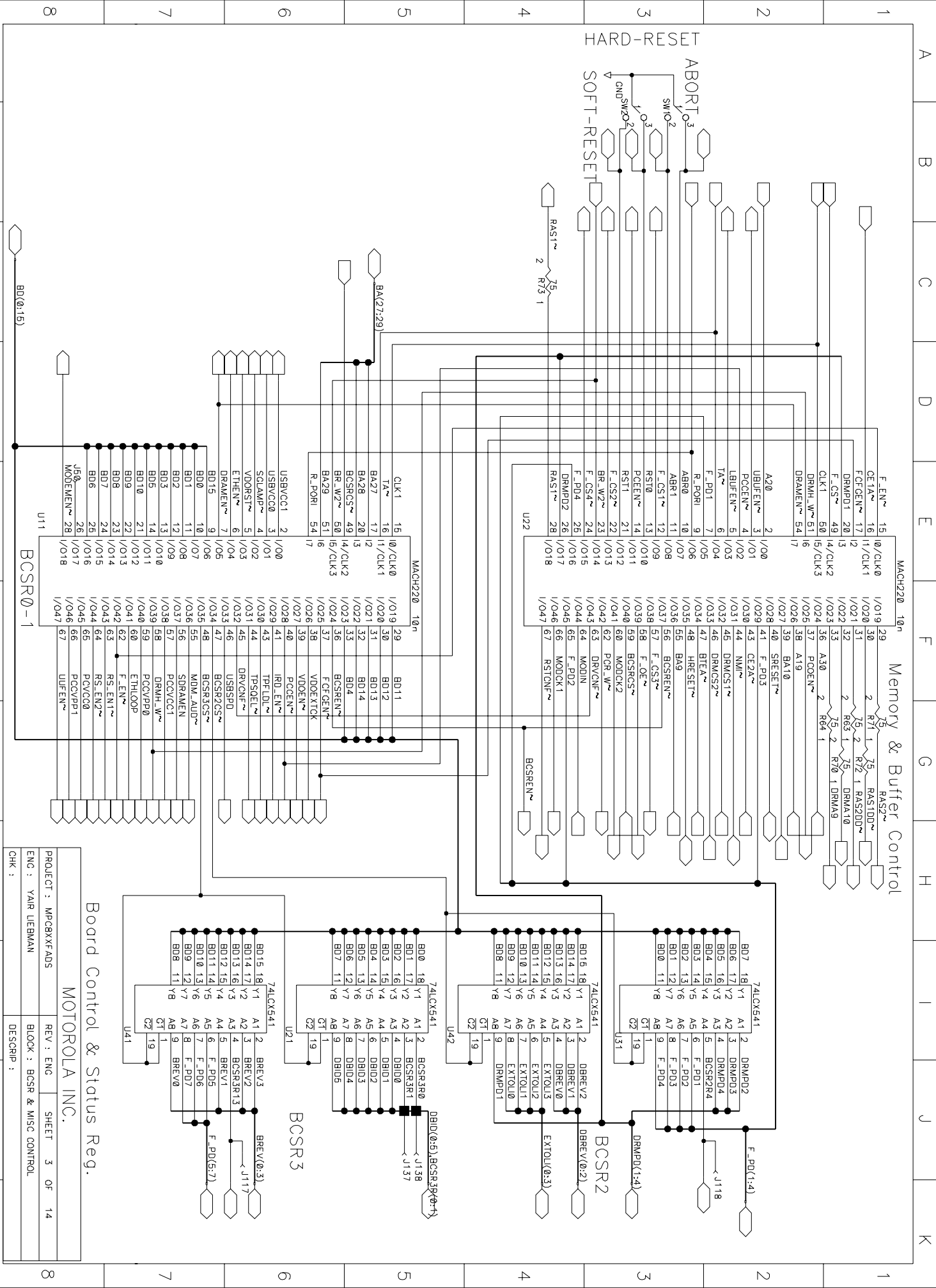
MOTOROLA INC.

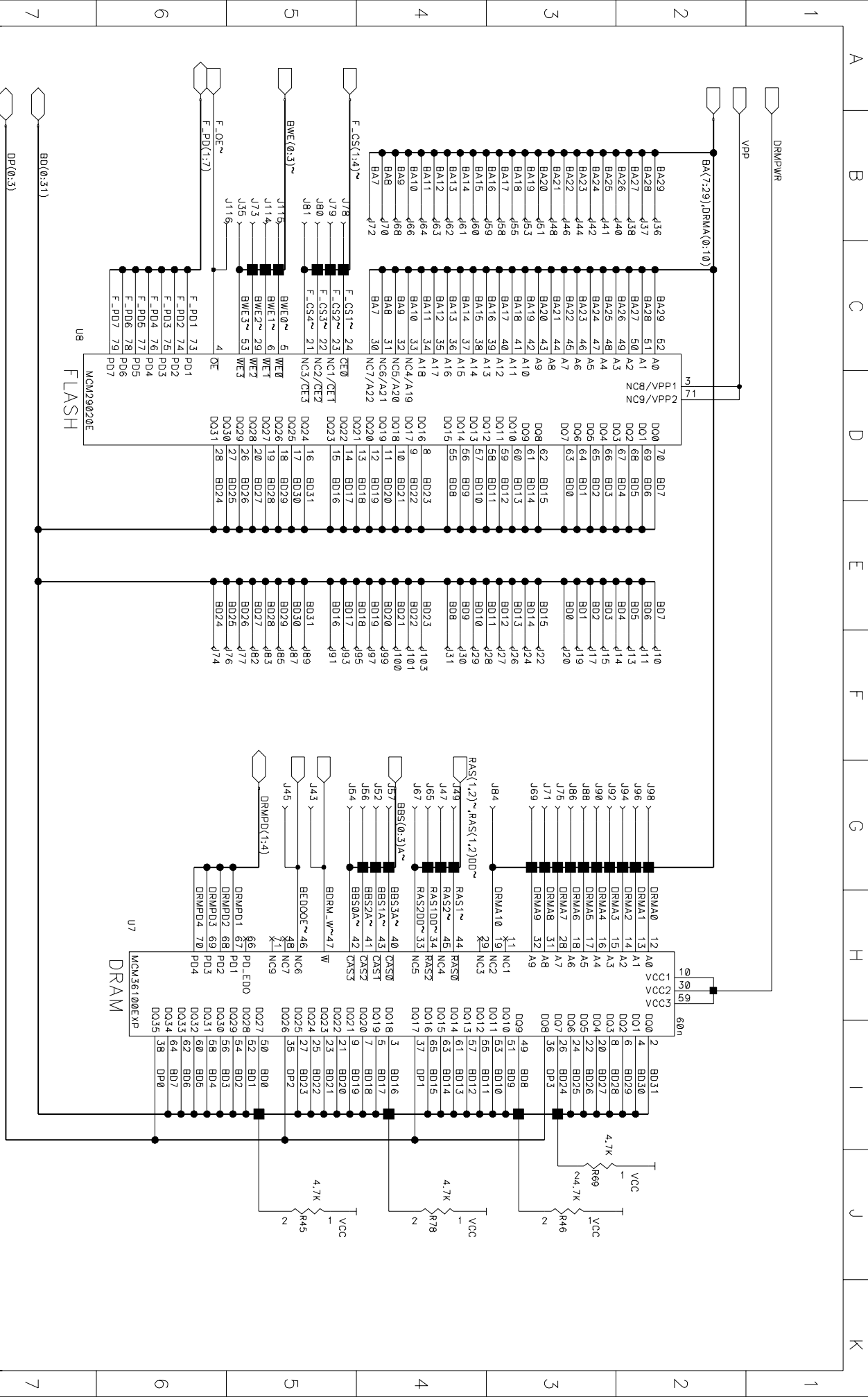


8

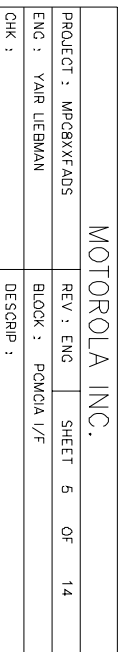
CHK

DESCRIP : ADDRESS, DATA & STROBE BUFFERS

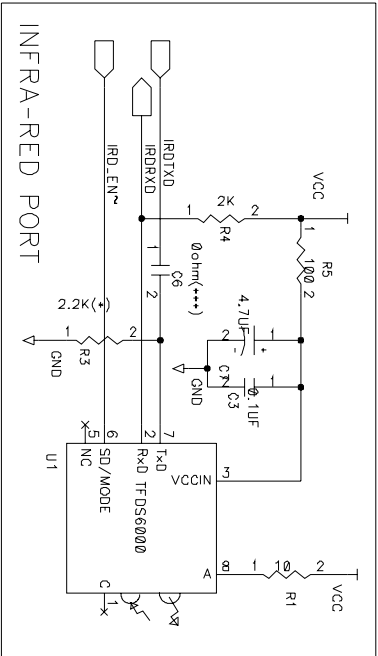
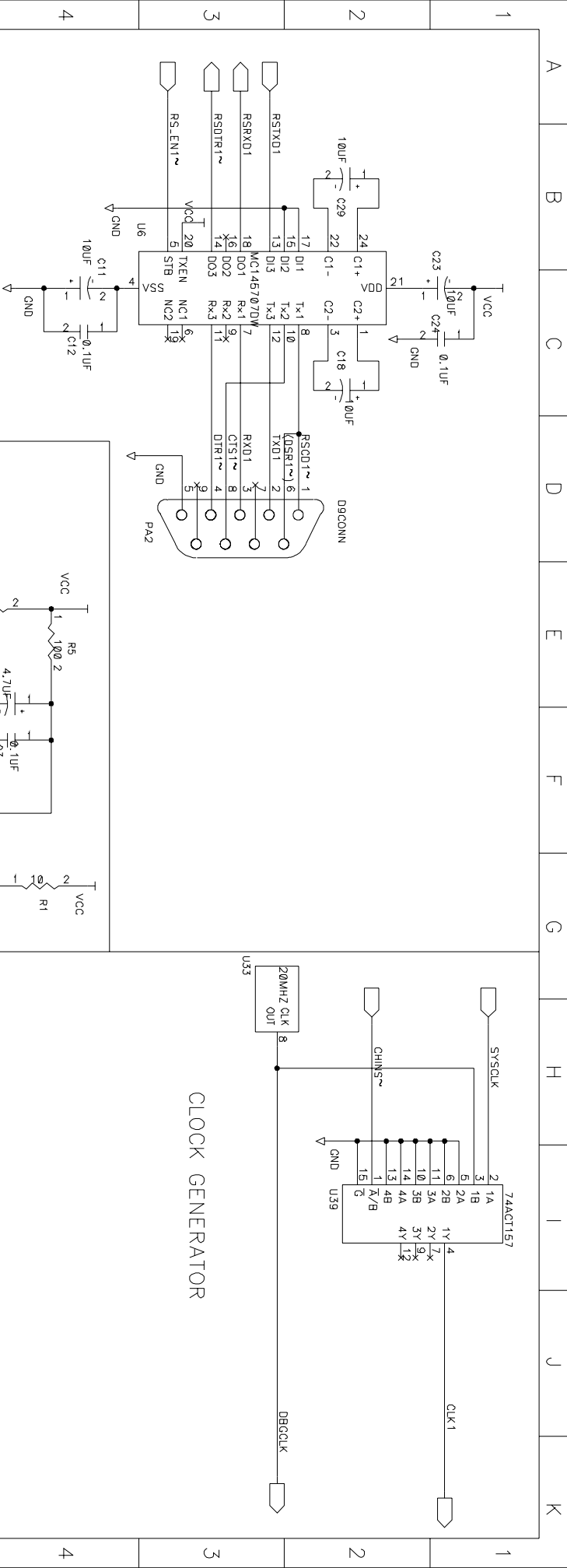




MOTOROLA INC.			
PROJECT : MFCBXXFADS	REV : ENG	SHEET	4 OF 14
ENG : YAIR LIEBMAN	BLOCK : DRAM & FLASH MODULES		
CHK :	DESCRIP :		

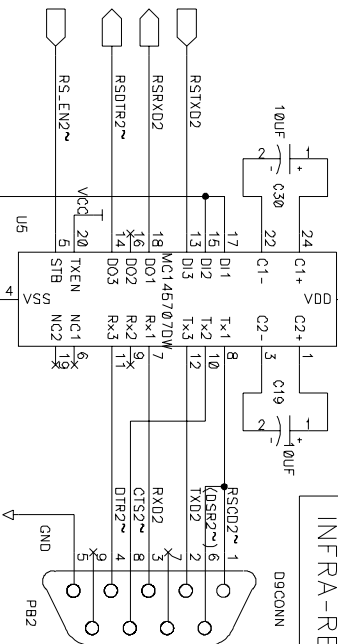






INFRA-RED PORT

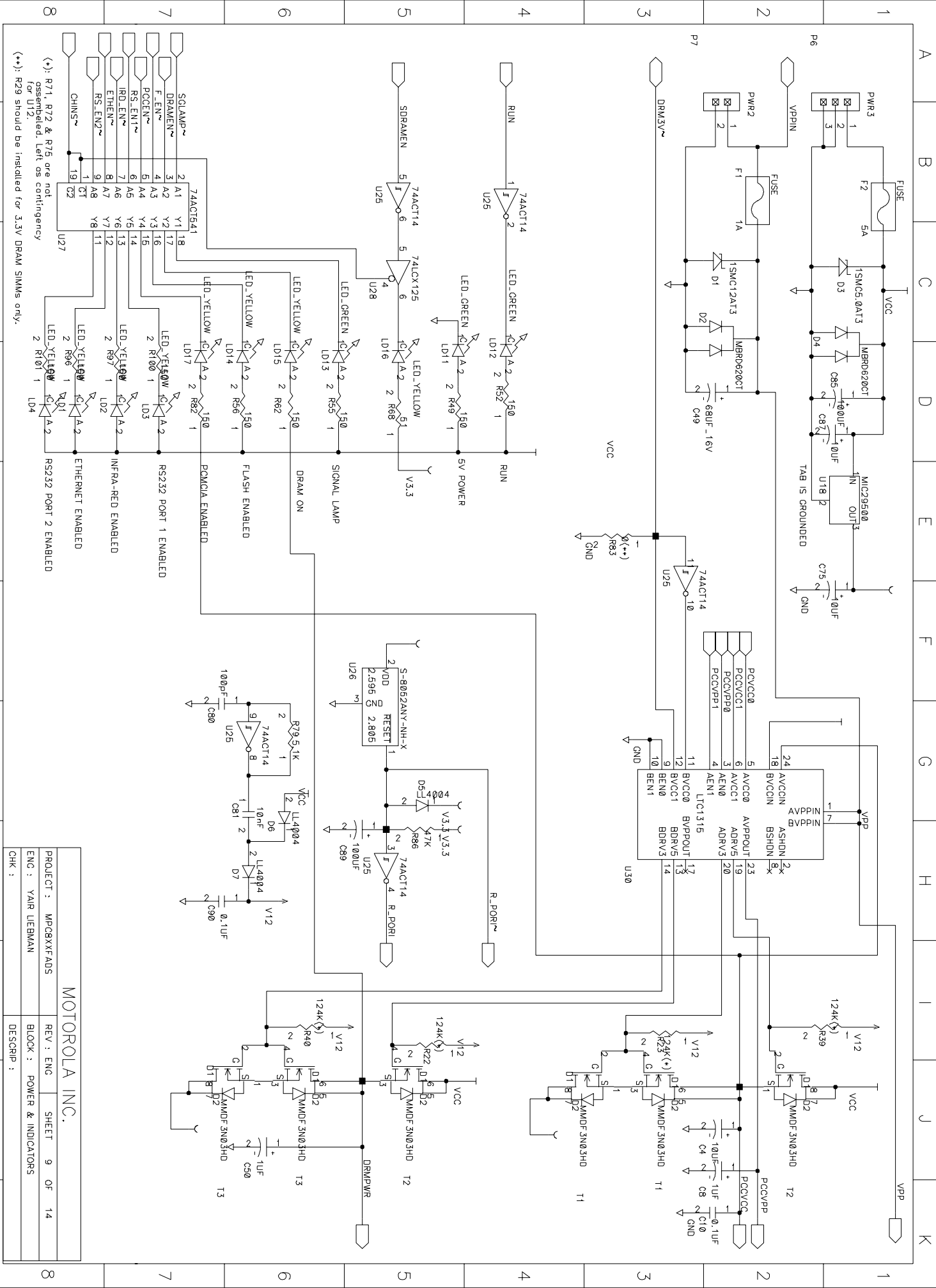
D9CONN



(+): R6 SHOULD NOT BE ASSEMBLED
(+++): C7 IS SHORTED WITH 0ohm RESISTOR

MOTOROLA INC.			
PROJECT : MPCRXXFADS	REV : ENG	SHEET 7 OF 14	
ENG : YAIR LIEBMAN	BLOCK : RS232, Infra Red & Clock Generator		
CHK :	DESCRIP :		





MOTOROLA INC.			
PROJECT :	MP08XXF A05	REV :	ENG
ENG :	YAIR LIEBMAN	BLOCK :	POWER & INDICATORS
CHK :		DESCRIP :	

8

8

7

7

6

6

5

5

4

4

3

3

2

2

1

1

A

K

B

C

D

E

F

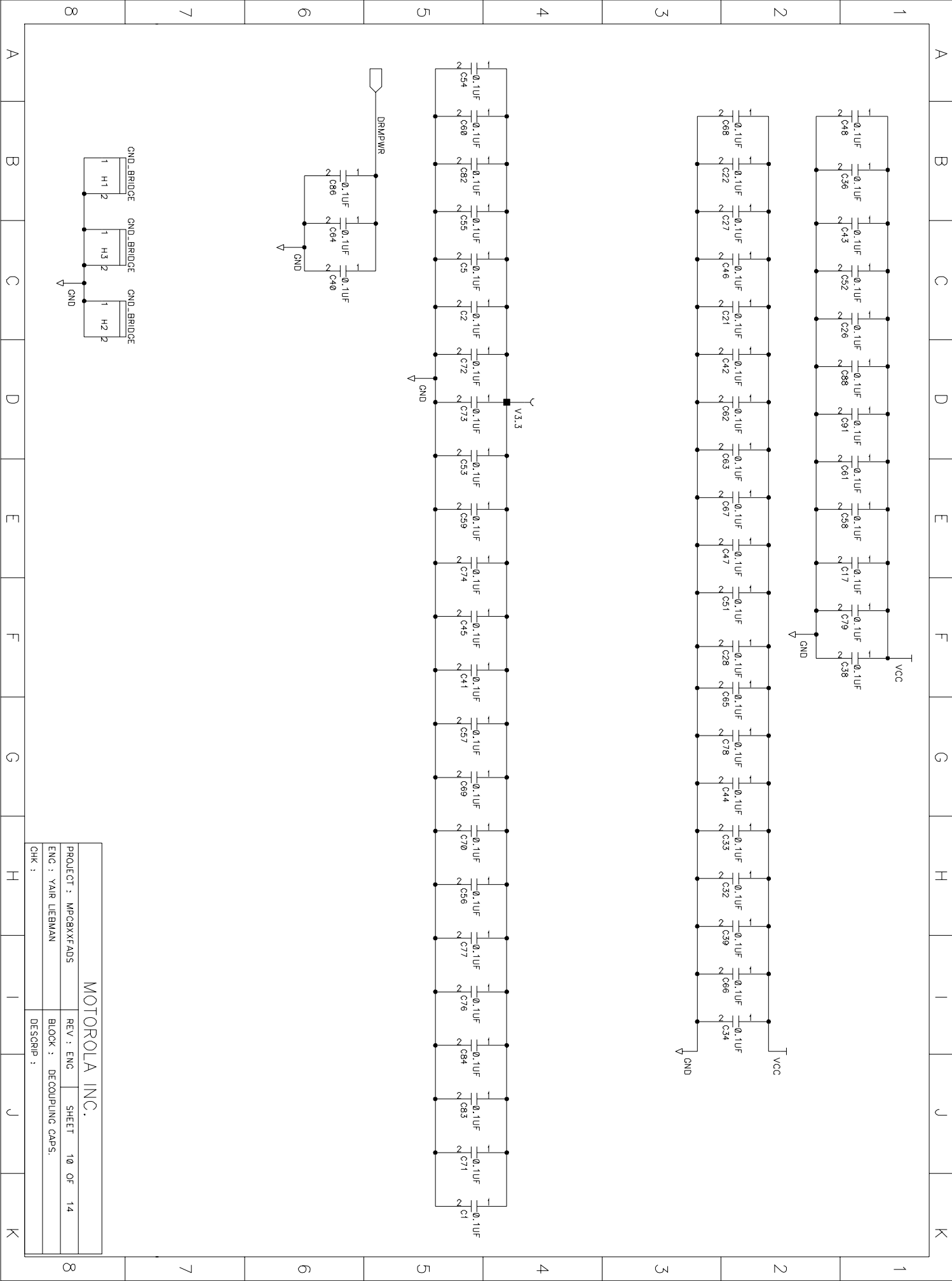
G

H

I

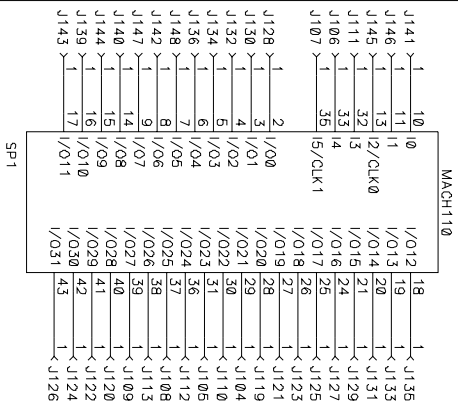
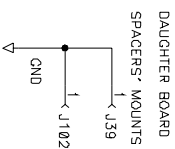
J

K



MOTOROLA INC.

PROJECT : MPC8XXFADS	REV : ENG	SHEET 10 OF 14
ENG : YAIR LIEBMAN	BLOCK : DECOUPLING CAPS.	
CHK :	DESCRIP :	



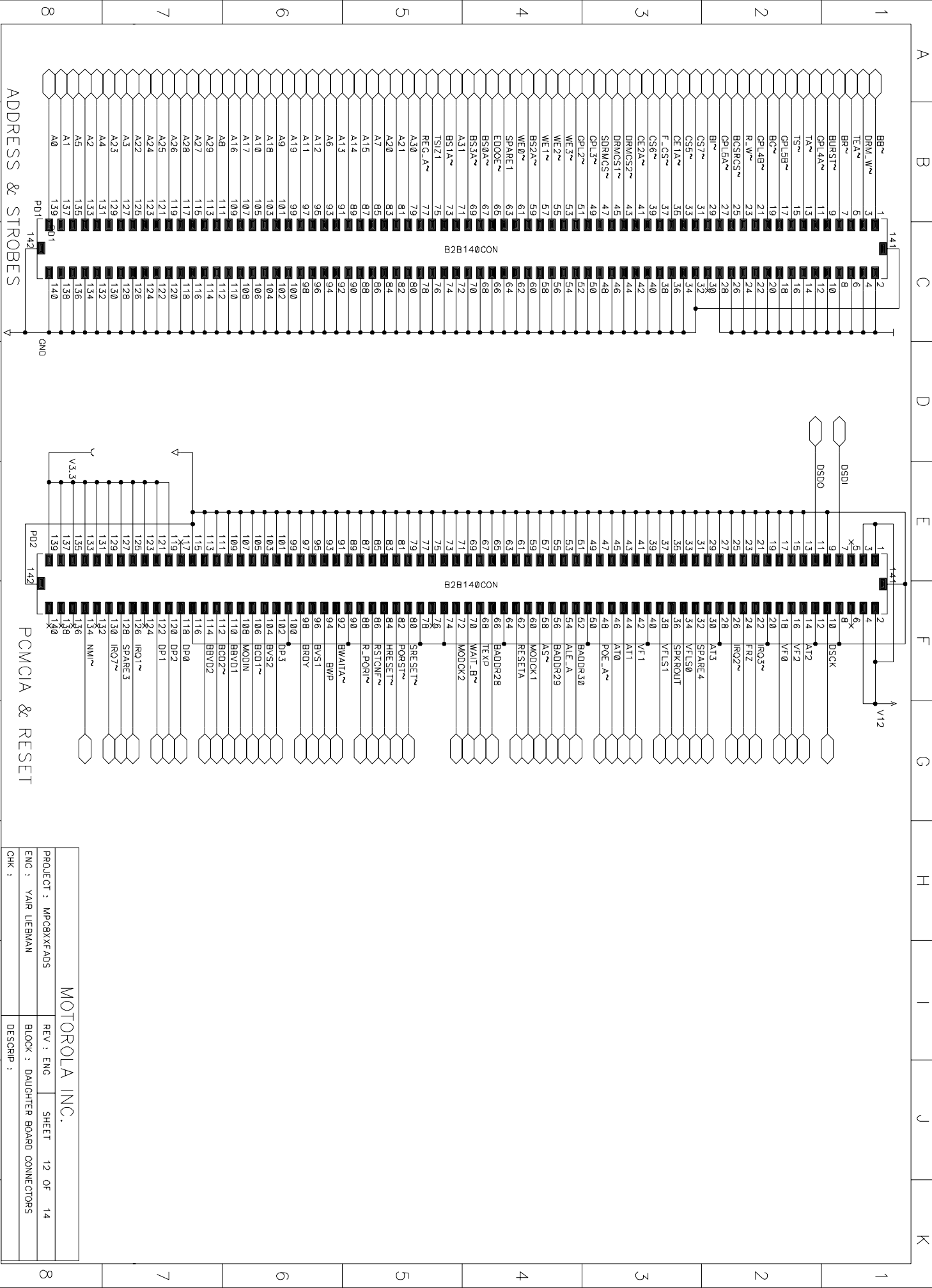
PULL-DOWNS

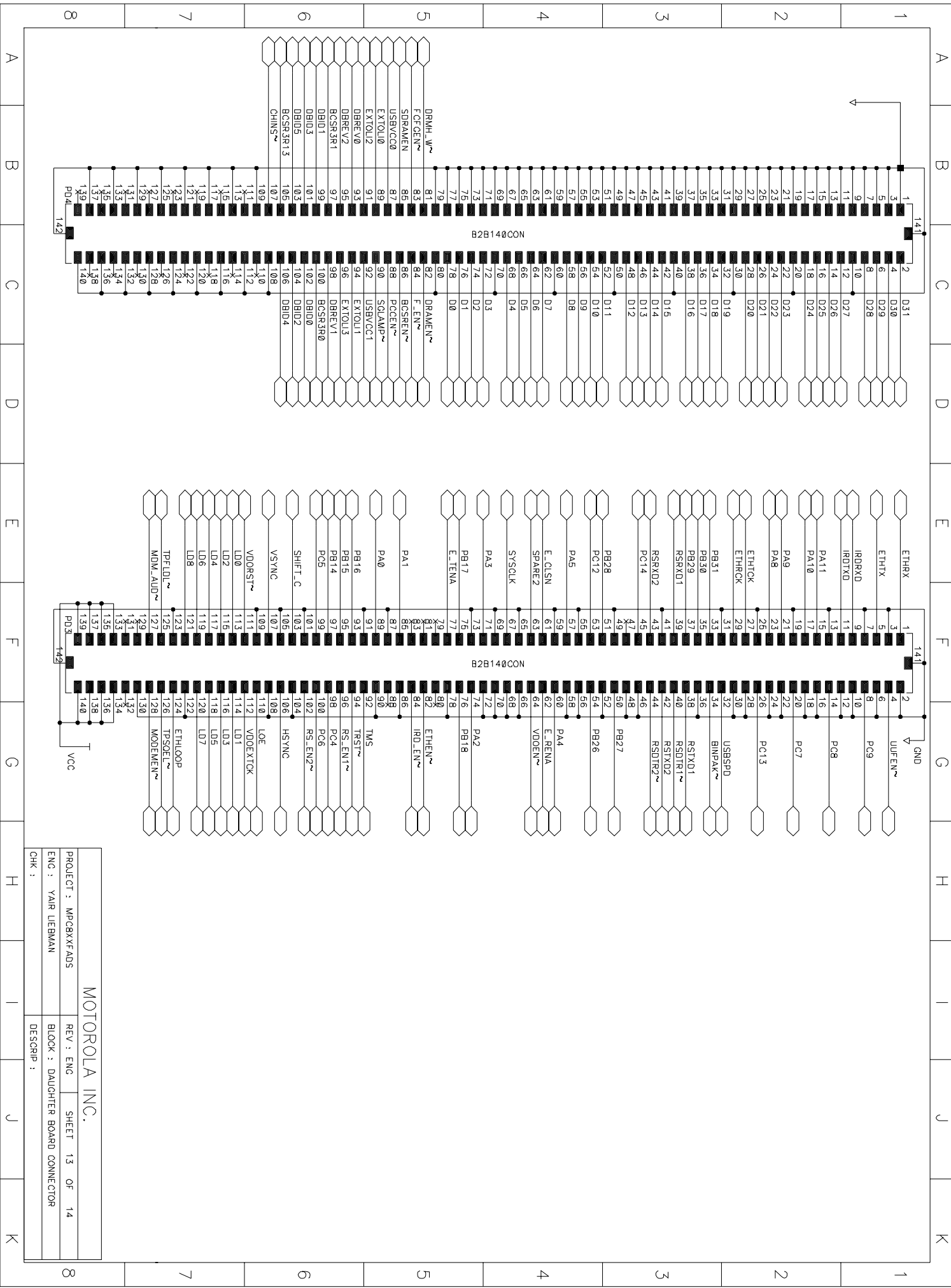
SPARE PARTS

MOTOROLA INC.

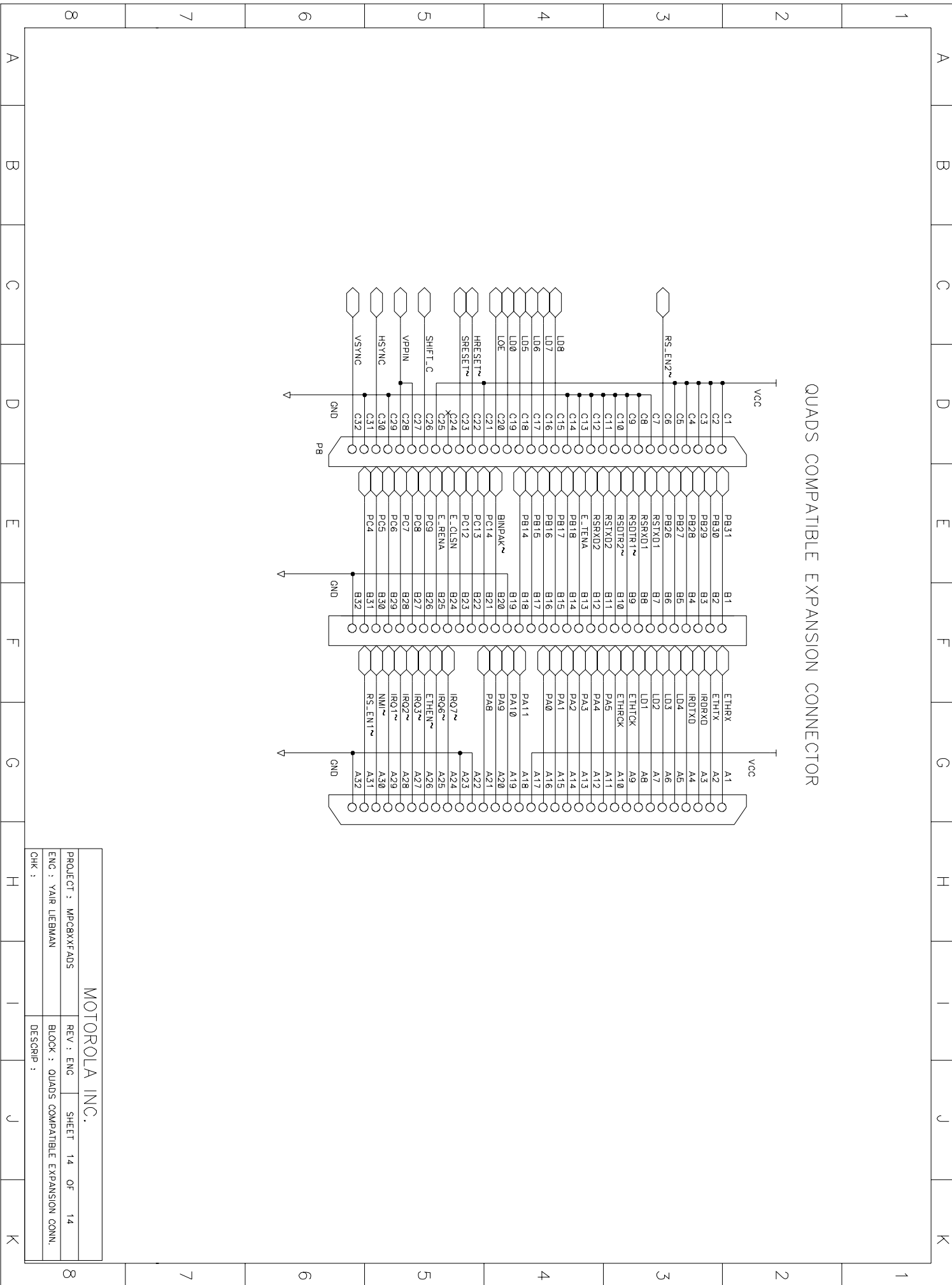
MOTOROLA INC.		
PROJECT : MPC8XXFADS	REV : ENG	SHEET 11 OF 14
ENG : YAIR LIEBMAN	BLOCK : PULL-UP / DOWN RESISTORS	
CHK :	DESCRIP :	

PC-CARD PULL-UPS





QUADS COMPATIBLE EXPANSION CONNECTOR



QUADS COMPATIBLE EXPANSION CONNECTOR

PROJECT : MPOBXFADS	REV : ENG	SHEET 14 OF 14
ENG : YAIR LIEBMAN	BLOCK : QUADS COMPATIBLE EXPANSION CONN.	
CHK :	DESCRIP :	

MOTOROLA INC.

QUADS COMPATIBLE EXPANSION CONNECTOR

PROJECT : MPOBXFADS	REV : ENG	SHEET 14 OF 14
ENG : YAIR LIEBMAN	BLOCK : QUADS COMPATIBLE EXPANSION CONN.	
CHK :	DESCRIP :	