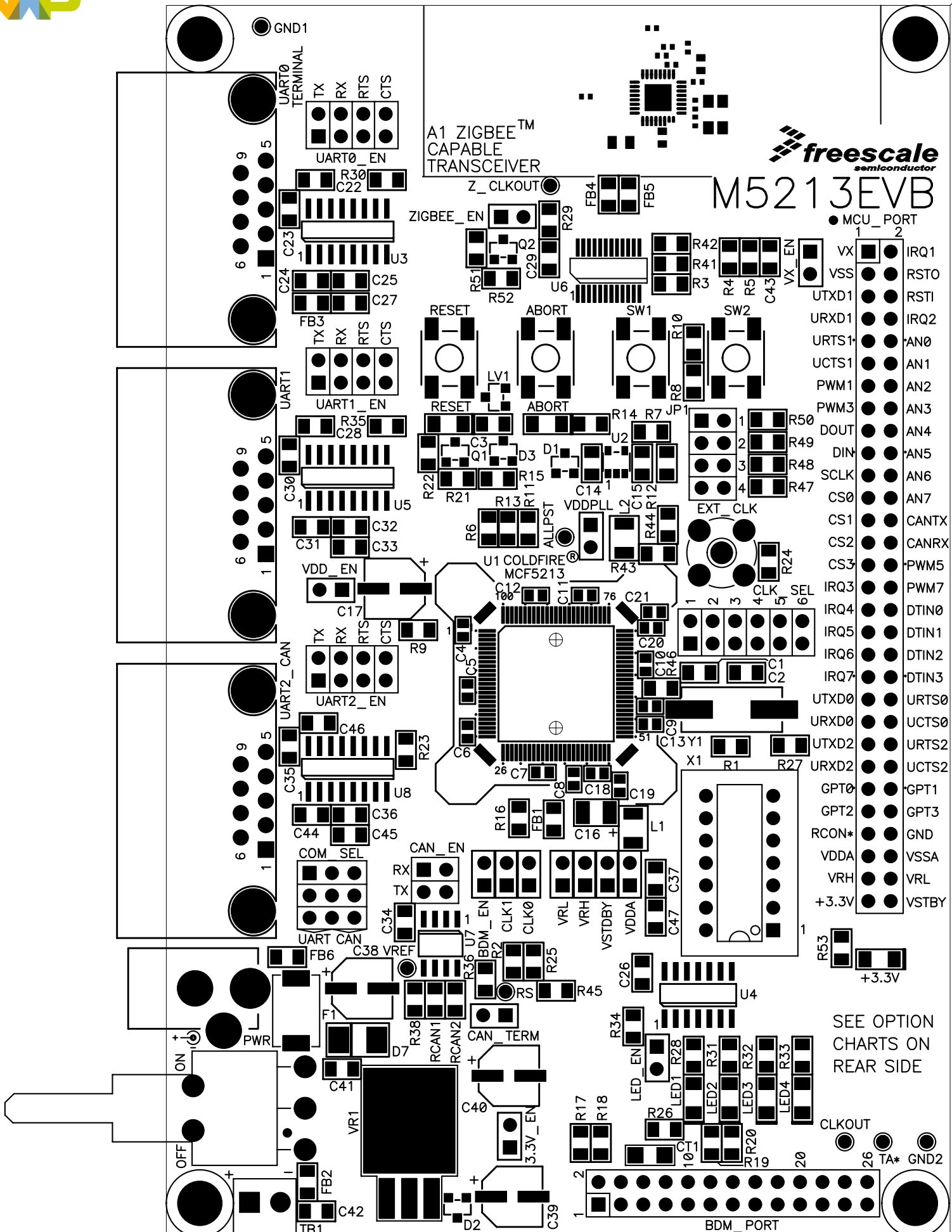




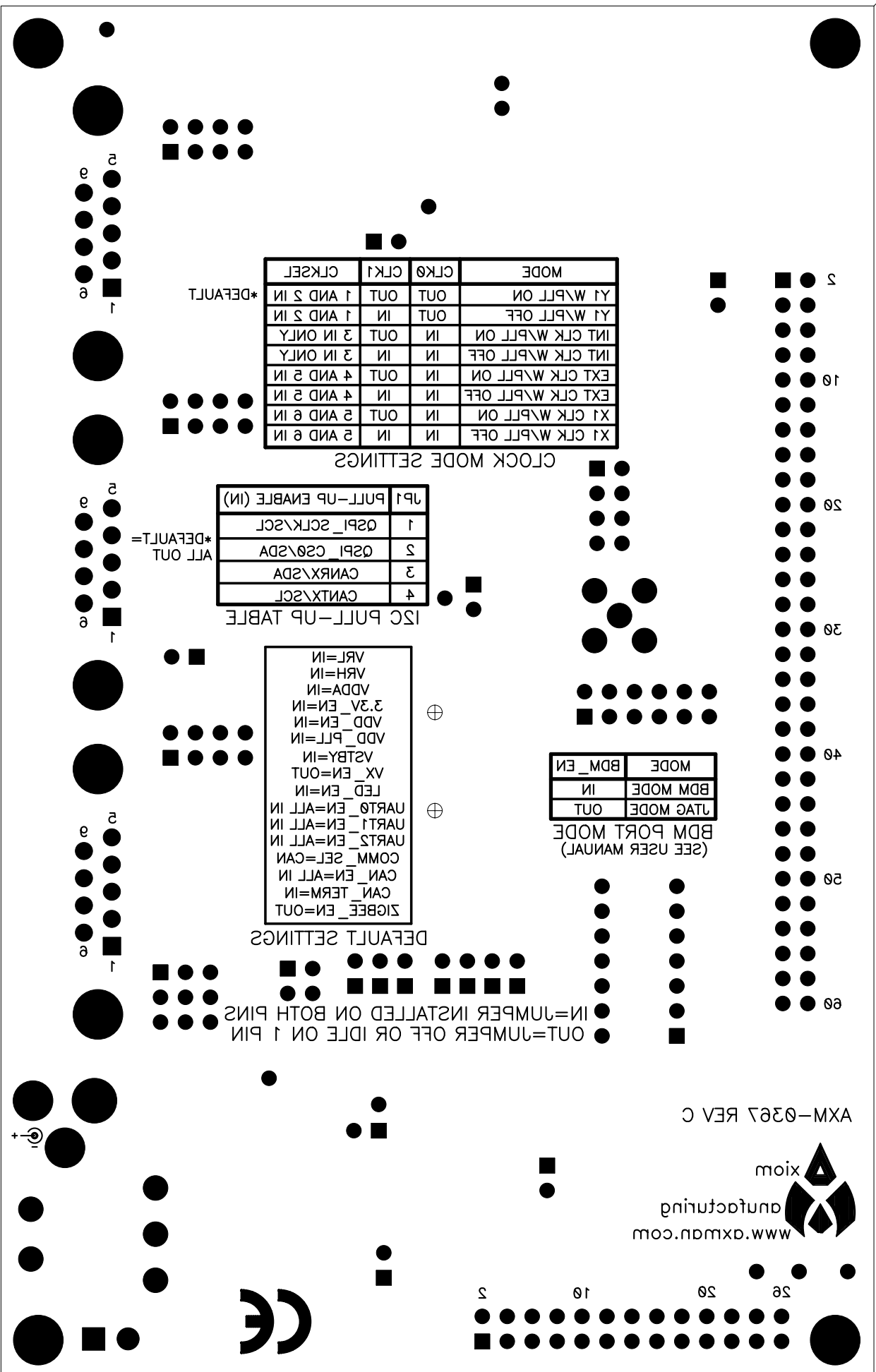
M5213EVB

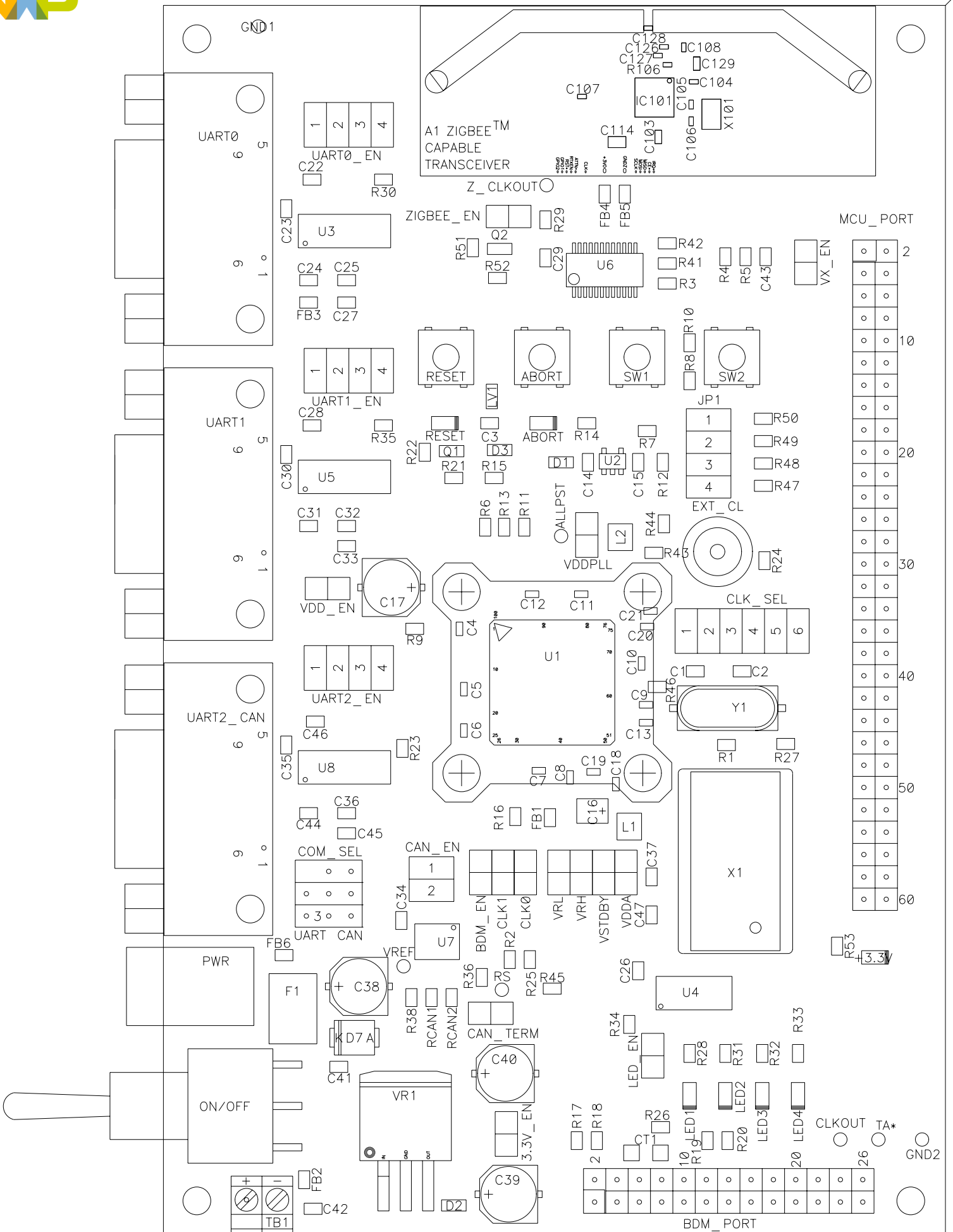
A1 ZIGBEE™ CAPABLE TRANSCEIVER



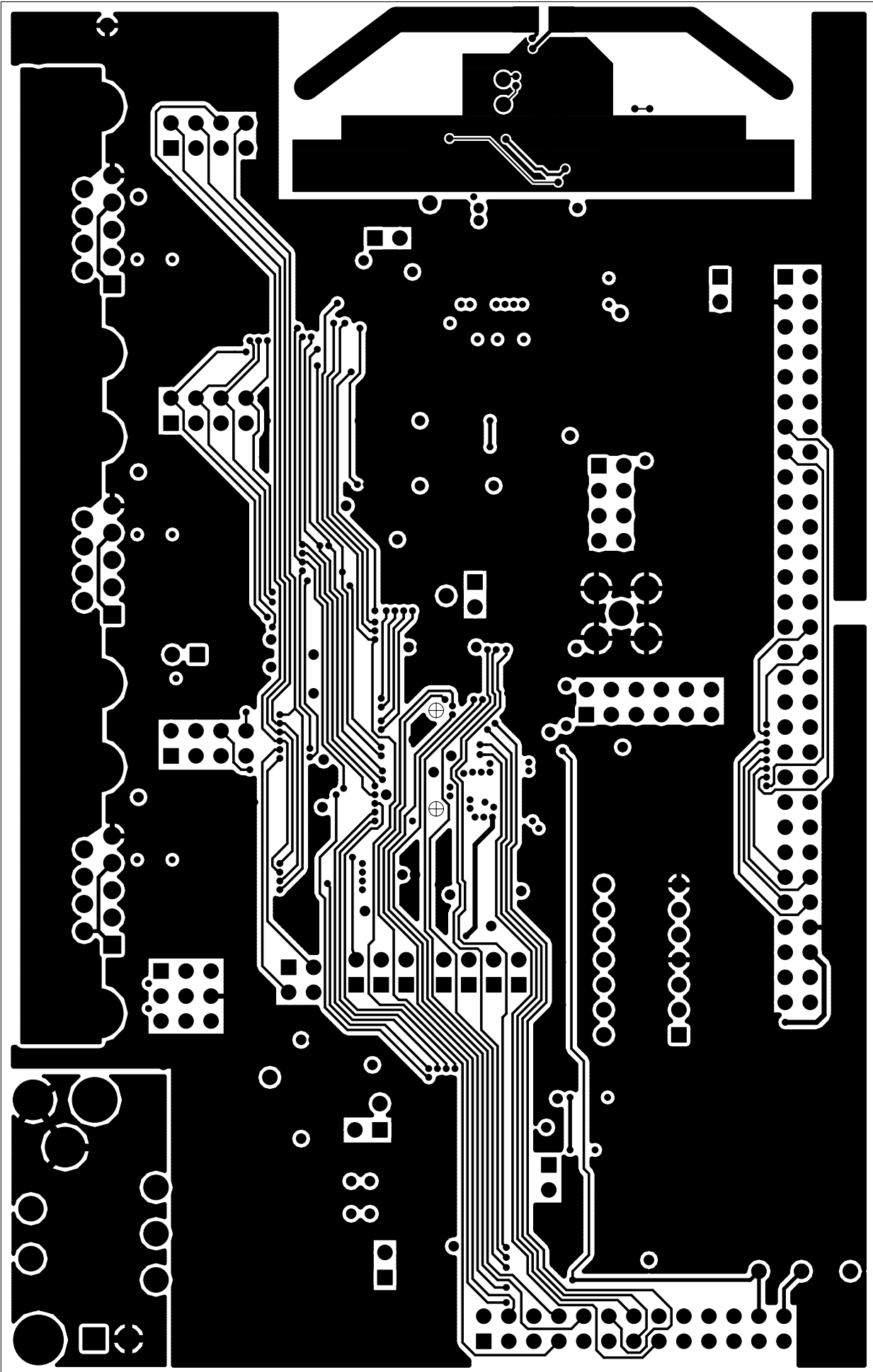
- MCU_PORT
- | | | |
|---|-------|-------|
| 1 | VX | IRQ1 |
| 2 | VSS | RST0 |
| | UTXD1 | RST1 |
| | URXD1 | IRQ2 |
| | URTS1 | AN0 |
| | UCTS1 | AN1 |
| | PWM1 | AN2 |
| | PWM3 | AN3 |
| | DOUT | AN4 |
| | DIN | AN5 |
| | SCLK | AN6 |
| | CS0 | AN7 |
| | CS1 | CANTX |
| | CS2 | CANRX |
| | CS3 | PWM5 |
| | IRQ3 | PWM7 |
| | IRQ4 | DTIN0 |
| | IRQ5 | DTIN1 |
| | IRQ6 | DTIN2 |
| | IRQ7 | DTIN3 |
| | UTXD0 | URTS0 |
| | URXD0 | UCTS0 |
| | UTXD2 | URTS2 |
| | URXD2 | UCTS2 |
| | GPT0 | GPT1 |
| | GPT2 | GPT3 |
| | RCON* | GND |
| | VDDA | VSSA |
| | VRH | VRL |
| | +3.3V | VSTBY |

SEE OPTION CHARTS ON REAR SIDE

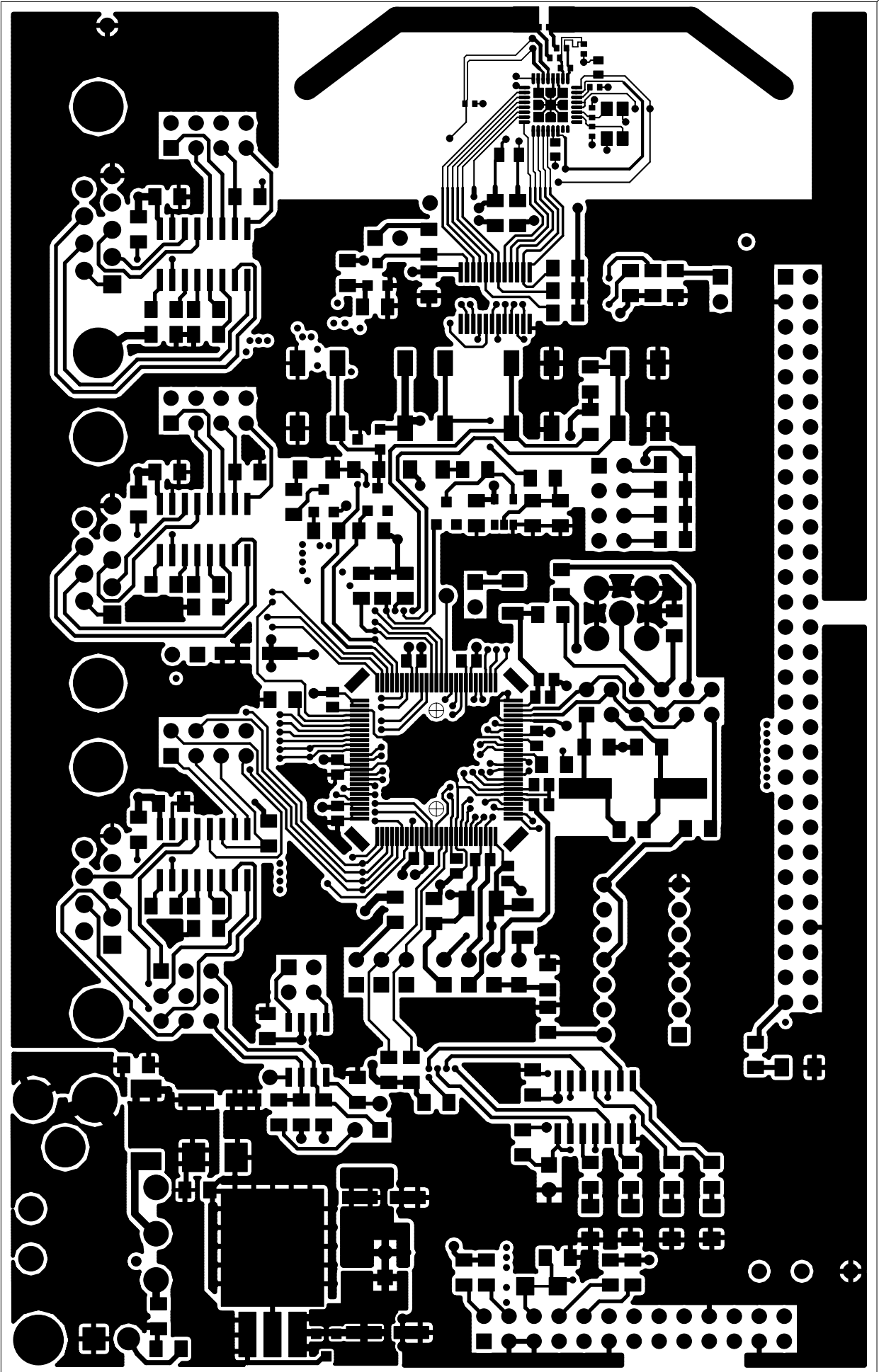




M5213EVb AXM-0367 REV. C
TOP ASSEMBLY



AXIOM MANUFACTURING
M5213EVB AXM-0367 REV. C
SOLDER LAYER-BOTTOM



AXIOM MANUFACTURING
M5213EVB AXM-0367 REV. C
COMPONENT LAYER-TOP

