
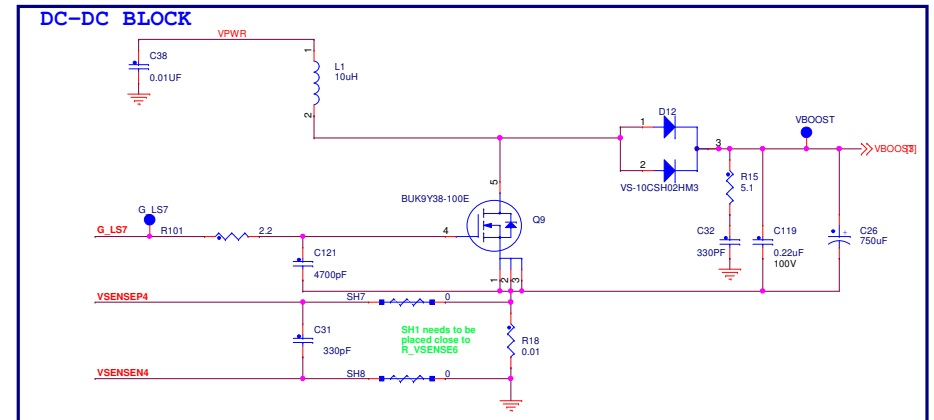
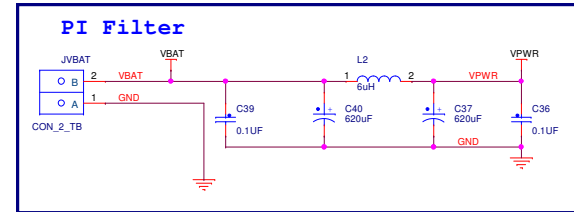
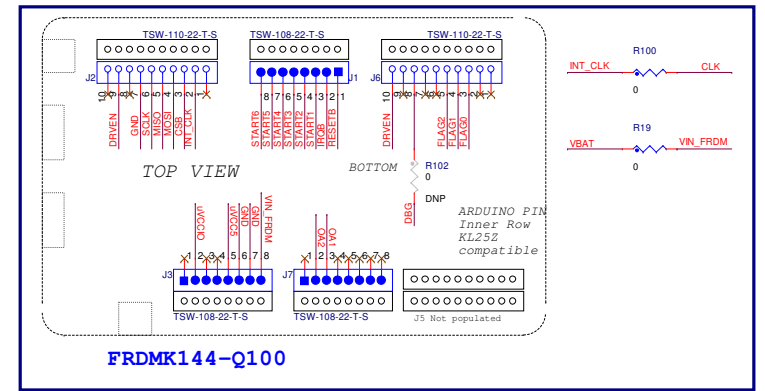
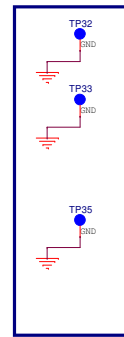
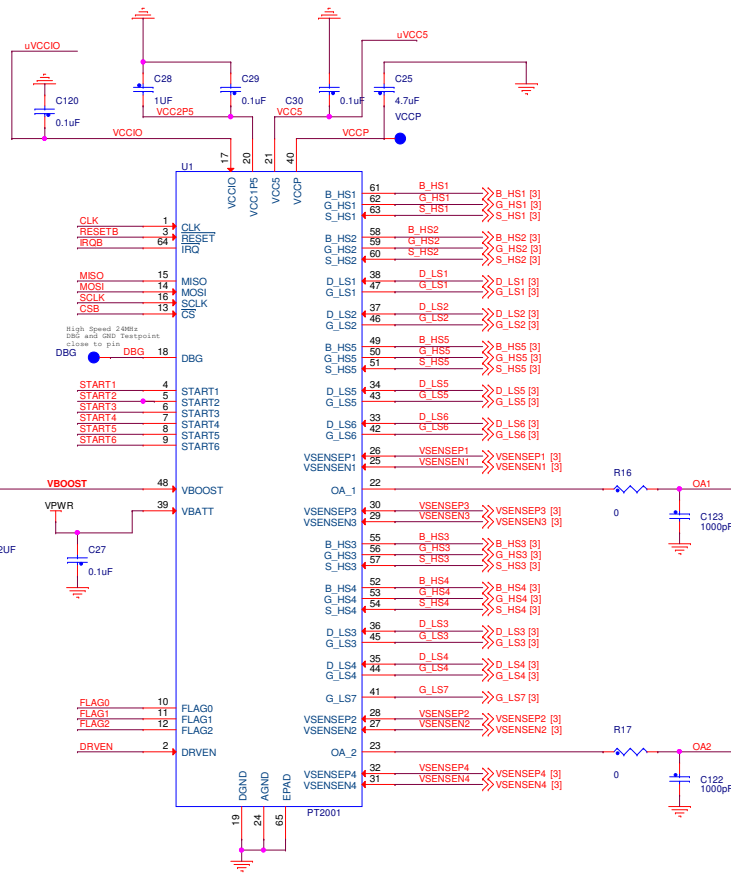


Table of Contents	
1	TITLE / TOC / REV
2	MC33PT2000
3	BANK

Revisions			
Rev	Description	Date	Approved
X1	Original Release	08-APR-16	Pierre Calmes
X2	Remove C RES Add 'TEST' TP to J2 pin 10	27-JUL-16	Pierre Calmes
B	Proto Release	14-NOV-16	Pierre Calmes
C		04-APR-17	Pierre Calmes
D		10-OCT-17	Pierre Calmes

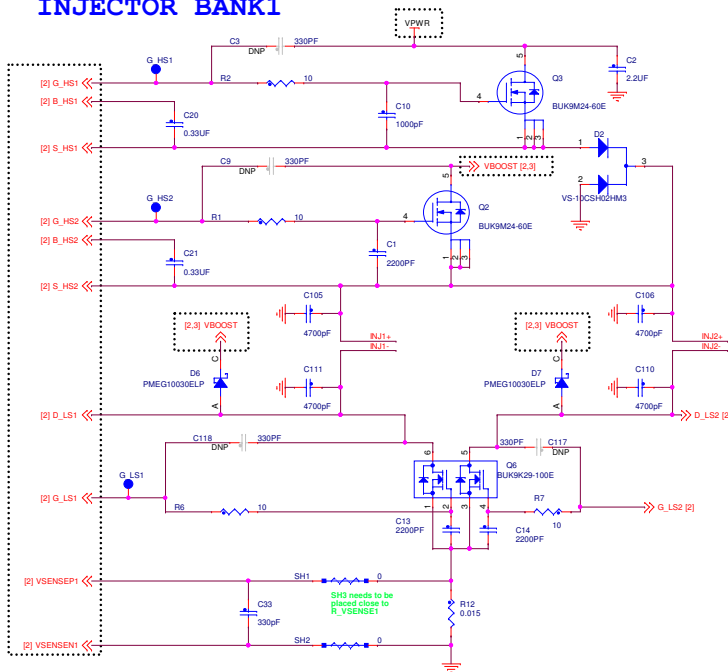
X-FRDMPT2001EVM

		Analog Sensor Product Group 6501 William Cannon Drive West Austin, TX 78735-8598	
This document contains information proprietary to NXP and shall not be used for engineering design, procurement or manufacture in whole or in part without the express written permission of NXP Semiconductors.			
ICAP Classification:		CP:	IJC: X PUBL:
Designer: Pierre Calmes	Drawing Title: X-FRDMPT2001EVM		
Drawn by: Pierre Calmes	Page Title: TITLE / TOC / REV		
Approved: Pierre Calmes	Size C	Document Number SCH-29357 PDF: SPF-29357	Rev D
Date: Tuesday, October 10, 2017		Sheet 1 of 3	

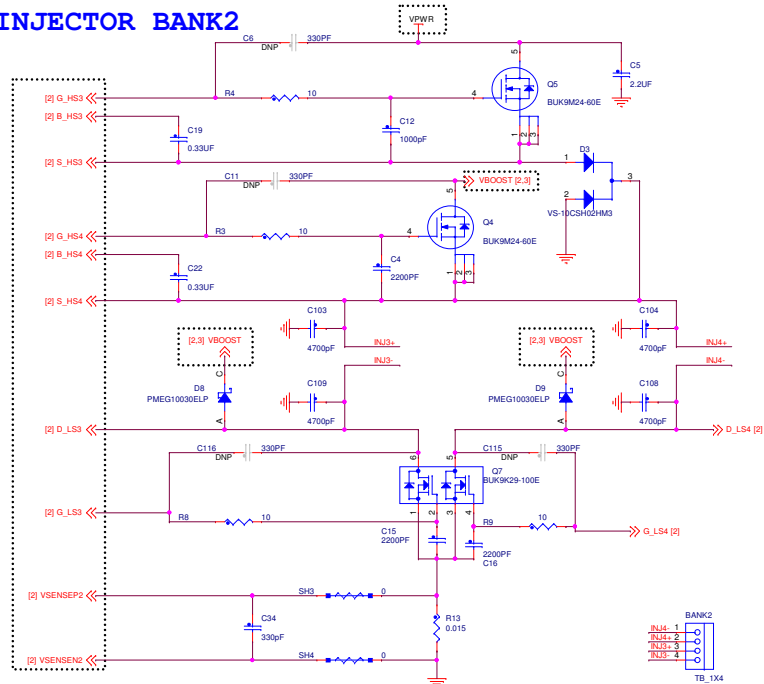


NXP			
ICAP Classification: CP: IUC: X PUB: X			
Drawing Title: X-FRDMPT2001EVM			
Page Title: MC33PT2000			
Size Custom	Document Number	SCH-29357 PDF: SPF-29357	Rev D
Date:	Tuesday, October 10, 2017	Sheet 2 of 3	

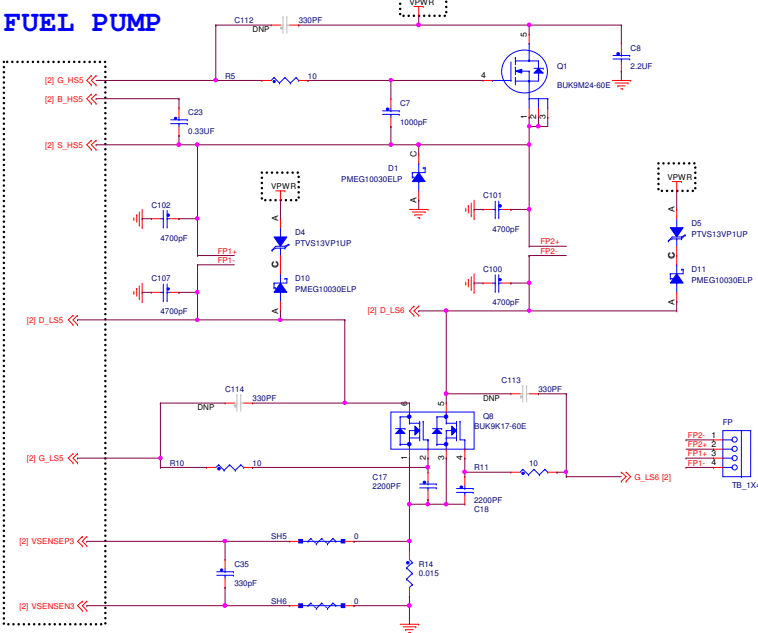
INJECTOR BANK1



INJECTOR BANK2



FUEL PUMP



ICAP Classification: CP: _____ ILO: X PUBI: _____

Drawing Title: 11. FIBERGLASS - FLOOR

X-FRDMPT2001EVM

Page Title: **BANK**

Size	Document Number
Custom	SCH-29357 PDF: SPF-29357

Date:	Tuesday, October 10, 2017	Sheet 3 of
-------	---------------------------	------------