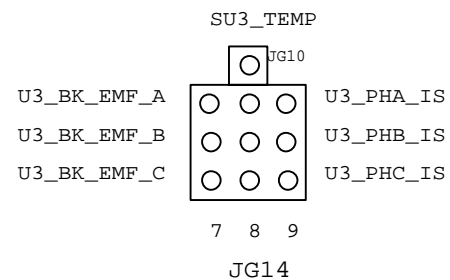


NOTE:
LOCATION OF JG10 IS
ON TOP OF JG14



MOTOROLA

Wireless Subscriber Division

6501 William Cannon Drive West

Austin, TX, 78735-8598

(512)895-3230 FAX: (512)895-4556 MD:OE314

Title MOTOR PHASE-CURRENT/BACK-EMF VOLTAGE ANALOG INPUT SELECTOR

Size
A

Document
Number

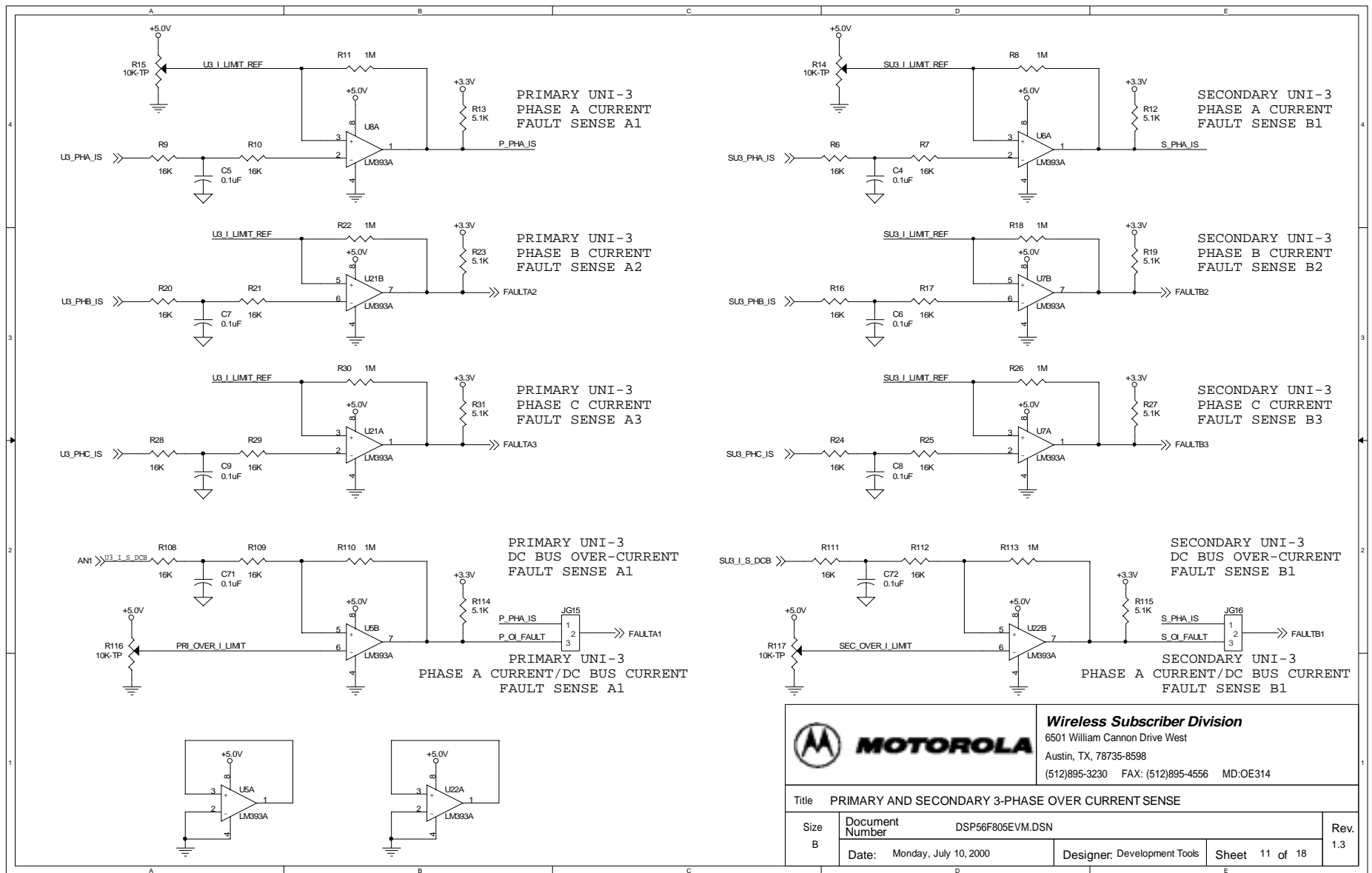
DSP56F805EVM.DSN

Date: Monday, July 10, 2000

Designer: Development Tools

Sheet 10 of 18

Rev.
1.3



Wireless Subscriber Division

6501 William Cannon Drive West
Austin, TX, 78735-8598
(512)895-3230 FAX: (512)895-4556 MD:OE314

Title PRIMARY AND SECONDARY 3-PHASE OVER CURRENT SENSE

Size B

Document Number DSP56F805EVM.DSN

Date: Monday, July 10, 2000

Designer: Development Tools

Sheet 11 of 18

Rev. 1.3

UNI-3: ZERO CROSSING

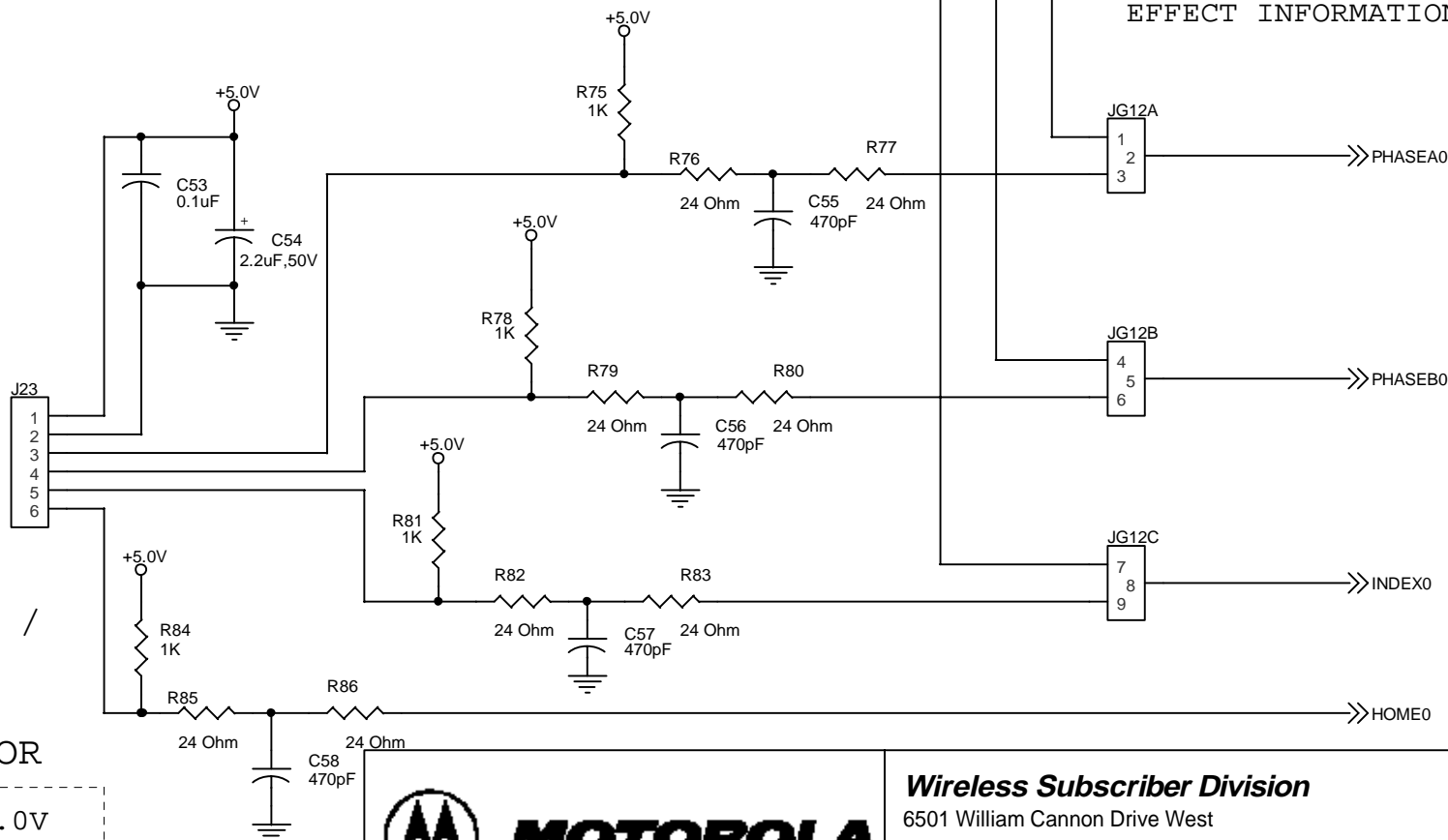
ZERO_X_A >>

ZERO_X_B >>

ZERO_X_C >>

CONNECT

1-2: ZERO CROSSING
INFORMATION
2-3: ENCODER / HALL
EFFECT INFORMATION



ENCODER /
HALL
EFFECT
CONNECTOR

PIN 1: +5.0V
PIN 2: GROUND
PIN 3: PHASE A
PIN 4: PHASE B
PIN 5: INDEX
PIN 6: HOME



MOTOROLA

Wireless Subscriber Division

6501 William Cannon Drive West
Austin, TX, 78735-8598
(512)895-3230 FAX: (512)895-4556 MD:OE314

Title PRIMARY ZERO-CROSSING/QUADRATURE-ENCODER OR HALL-EFFECT SELECTOR

Size
A

Document
Number

DSP56F805EVM.DSN

Date: Monday, July 10, 2000

Designer: Development Tools

Sheet 12 of 18

Rev.
1.3

SECONDARY UNI-3: ZERO CROSSING

SU3_ZERO_X_A >>

SU3_ZERO_X_B >>

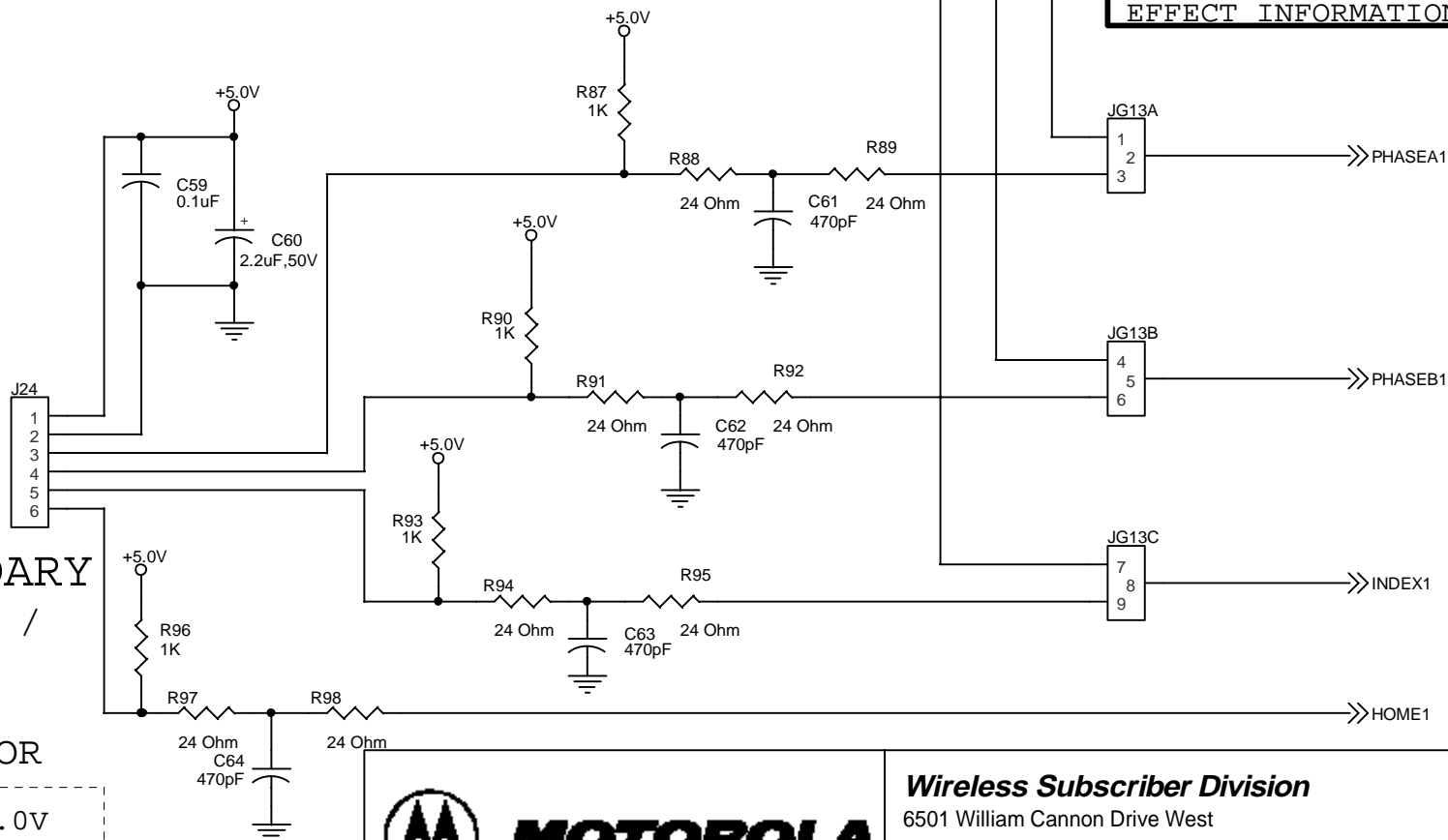
SU3_ZERO_X_C >>

CONNECT

1-2: ZERO CROSSING
INFORMATION
2-3: ENCODER / HALL
EFFECT INFORMATION

SECONDARY ENCODER / HALL EFFECT CONNECTOR

PIN 1: +5.0V
PIN 2: GROUND
PIN 3: PHASE A
PIN 4: PHASE B
PIN 5: INDEX
PIN 6: HOME



MOTOROLA

Wireless Subscriber Division

6501 William Cannon Drive West

Austin, TX, 78735-8598

(512)895-3230 FAX: (512)895-4556 MD:OE314

Title SECONDARY ZERO-CROSSING/QUADRATURE-ENCODER OR HALL-EFFECT SELECTOR

Size
A

Document
Number

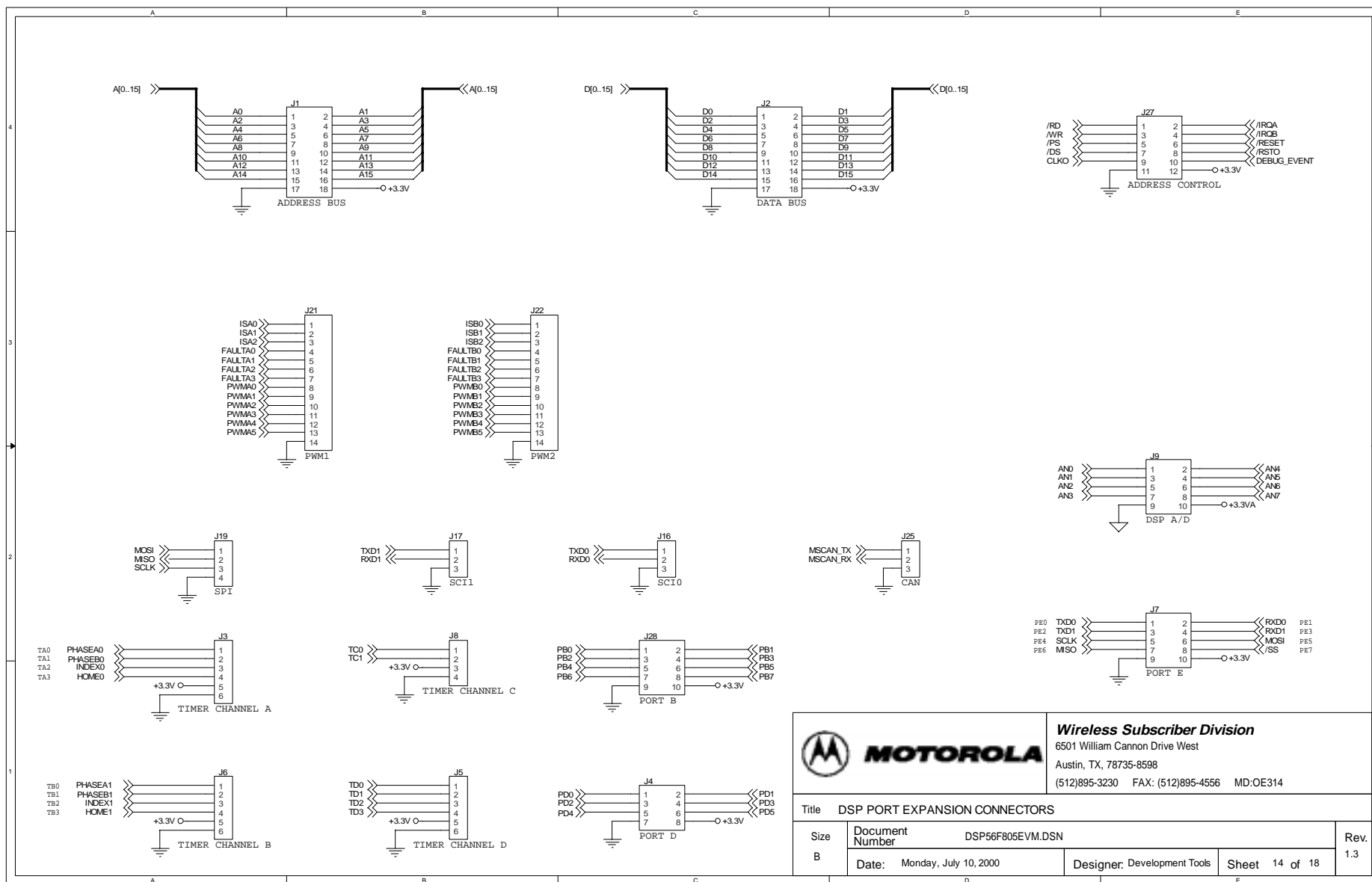
DSP56F805EVM.DSN


Date: Monday, July 10, 2000

Designer: Development Tools

Sheet 13 of 18

Rev.
1.3

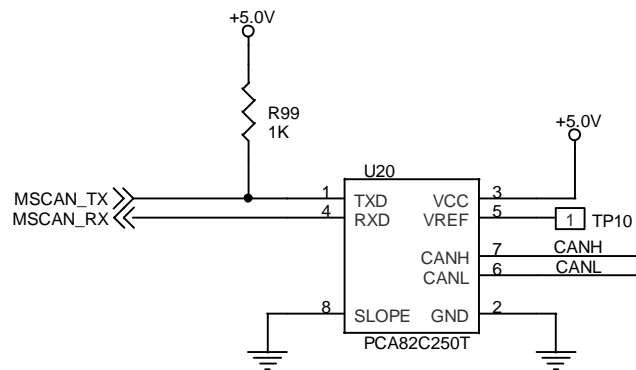




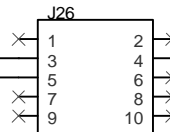
MOTOROLA

Wireless Subscriber Division
 6501 William Cannon Drive West
 Austin, TX, 78735-8598
 (512)895-3230 FAX: (512)895-4556 MD:OE314

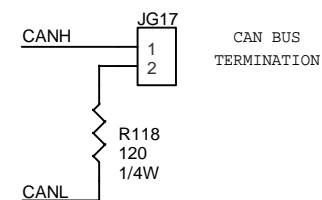
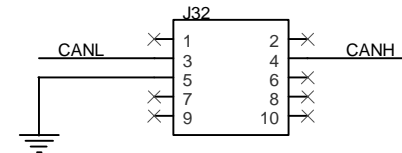
Title DSP PORT EXPANSION CONNECTORS			
Size B	Document Number DSP56F805EVM.DSN	Date: Monday, July 10, 2000	Rev. 1.3
Designer: Development Tools		Sheet 14 of 18	



CAN BUS CONNECTOR



DAISY-CHAIN
CAN BUS CONNECTOR



MOTOROLA

Wireless Subscriber Division

6501 William Cannon Drive West
Austin, TX, 78735-8598
(512)895-3230 FAX: (512)895-4556 MD:OE314

Title HIGH-SPEED CAN INTERFACE

Size
A

Document
Number

DSP56F805EVM.DSN

Date: Monday, July 10, 2000

Designer: Development Tools

Sheet 15 of 18

Rev.
1.3

Parallel JTAG Interface

PORT IDENT

P1

14 15 16 17 18 19 20 21 22 23 24 25

1 2 3 4 5 6 7 8 9 10 11 12 13

PORT_RESET
PORT_TMS
PORT_TCK
PORT_TDI
/PORT_TRST
PORT_DE
PORT_VCC
PORT_TDO
PORT_CONNECT

R122 5.1K

C10 0.1uF

U8 MC74HC244DW

1A1 1A2 1A3 1A4 2A1 2A2 2A3 2A4

1Y1 1Y2 1Y3 1Y4 2Y1 2Y2 2Y3 2Y4

VCC GND

U10 MC74HC244DW

1A1 1A2 1A3 1A4 2A1 2A2 2A3 2A4

1Y1 1Y2 1Y3 1Y4 2Y1 2Y2 2Y3 2Y4

VCC GND

JG11

On-Board Host Target Interface Power Selection

On-Board Host Target Interface Disable

JG5

TP28

TP29

P RESET

TMS

TCK

TDI

/TRST

TDO

+3.3V

GND

R33 51 Ohm

R34 51 Ohm

R104 47K

R37 5.1K

Q1 2N2222A

R35 5.1K

R36 47K

R38 47K

J29

JTAG Connector

Wireless Subscriber Division

6501 William Cannon Drive West

Austin, TX, 78735-8598

(512)895-3230 FAX: (512)895-4556 MD:OE314

MOTOROLA

Title PARALLEL JTAG HOST TARGET INTERFACE AND JTAG CONNECTOR

Size B

Document Number DSP56F805EVM.DSN

Date: Monday, July 10, 2000

Designer: Development Tools

Sheet 16 of 18

Rev. 1.3



Wireless Subscriber Division
6501 William Cannon Drive West
Austin, TX, 78735-8598
(512)895-3230 FAX: (512)895-4556 MD:OE314

Title PARALLEL JTAG HOST TARGET INTERFACE AND JTAG CONNECTOR

Size	Document Number	DSP56F805EVM.DSN
------	-----------------	------------------

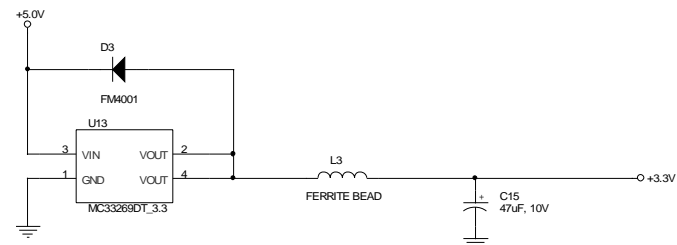
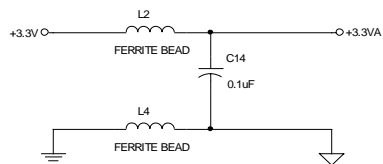
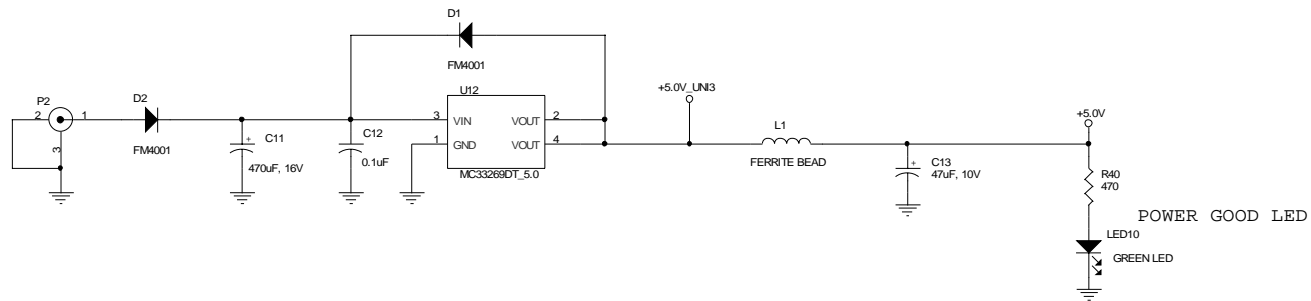
Date: Monday, July 10, 2000

Designer: Development Tools

Sheet 16 of 18

Rev.
1.3

EXTERNAL POWER IN
INPUT 12V DC



+3.3VA
TEST POINT



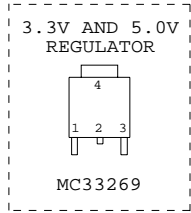
ANALOG GROUND
TEST POINT




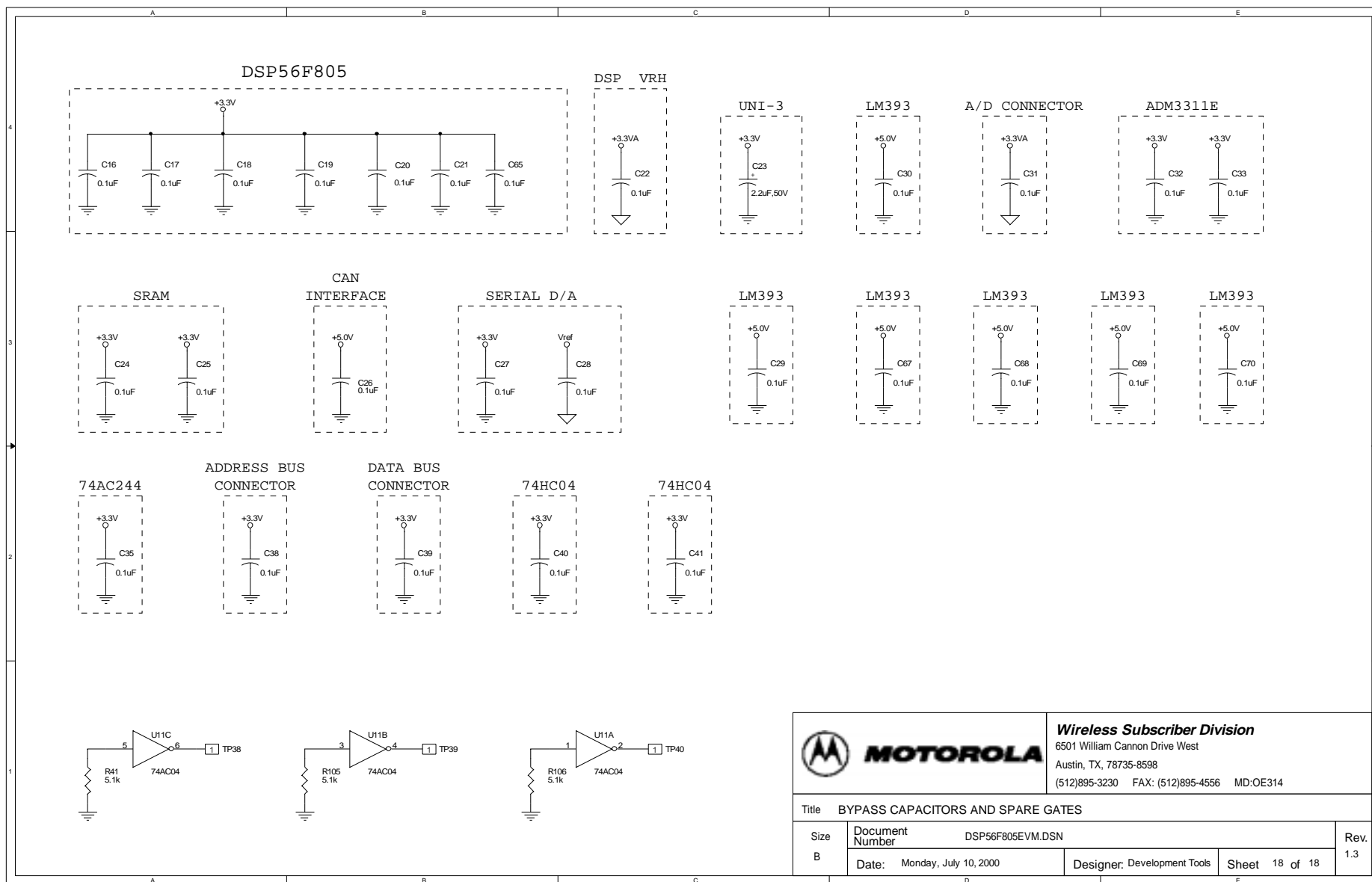
GROUND
TEST POINT




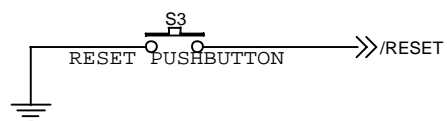
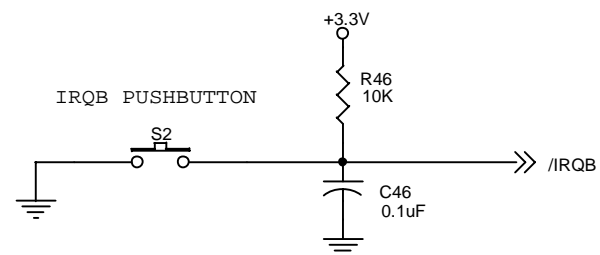
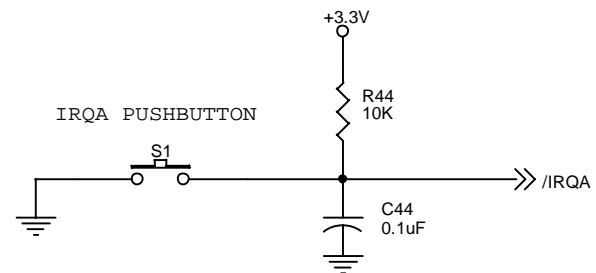
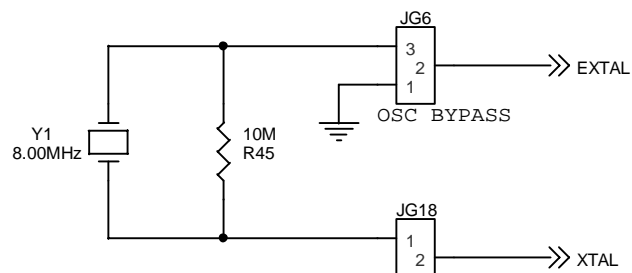
+3.3V
TEST POINT



 MOTOROLA		Wireless Subscriber Division 6501 William Cannon Drive West Austin, TX, 78735-8598 (512)895-3230 FAX: (512)895-4556 MD:OE314		
Title POWER SUPPLIES				
Size B	Document Number	DSP56F805EVM.DSN		Rev. 1.3
	Date:	Monday, July 10, 2000	Designer: Development Tools	

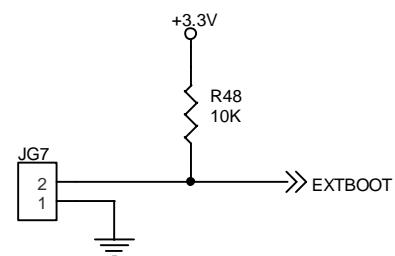


 MOTOROLA		Wireless Subscriber Division 6501 William Cannon Drive West Austin, TX, 78735-8598 (512)895-3230 FAX: (512)895-4556 MD:OE314		
Title BYPASS CAPACITORS AND SPARE GATES				
Size B	Document Number	DSP56F805EVM.DSN		Rev 1.3
	Date:	Monday, July 10, 2000	Designer: Development Tools	



BOOT MODE JUMPER

EXT BOOT	NC
INT BOOT	1 - 2



MOTOROLA

Wireless Subscriber Division

6501 William Cannon Drive West

Austin, TX, 78735-8598

(512)895-3230 FAX: (512)895-4556 MD:OE314

Title RESET, MODE, CLOCK & IRQS

Size
A

Document
Number

DSP56F805EVM.DSN

Date: Monday, July 10, 2000

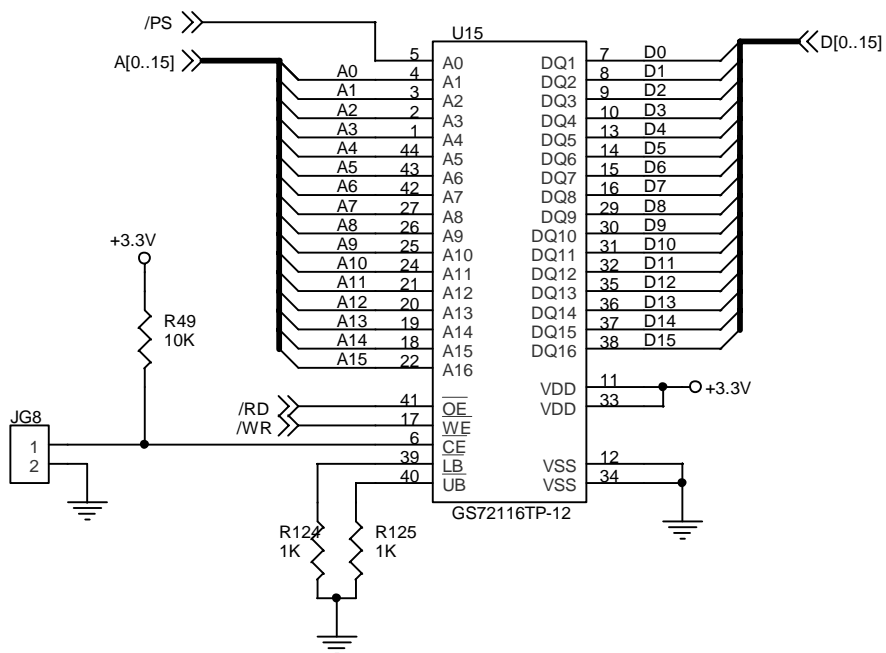
Designer: Development Tools

Sheet 2 of 18

Rev.
1.3

64Kx16-bit Program and 64Kx16-bit Data Memory

SRAM ENABLE JUMPER	
OPTION	JG8
SRAM ENABLE	1 - 2
SRAM DISABLE	NC



MOTOROLA

Wireless Subscriber Division

6501 William Cannon Drive West

Austin, TX, 78735-8598

(512)895-3230 FAX: (512)895-4556 MD:OE314

Title PROGRAM & DATA SRAM MEMORY

Size
A

Document
Number

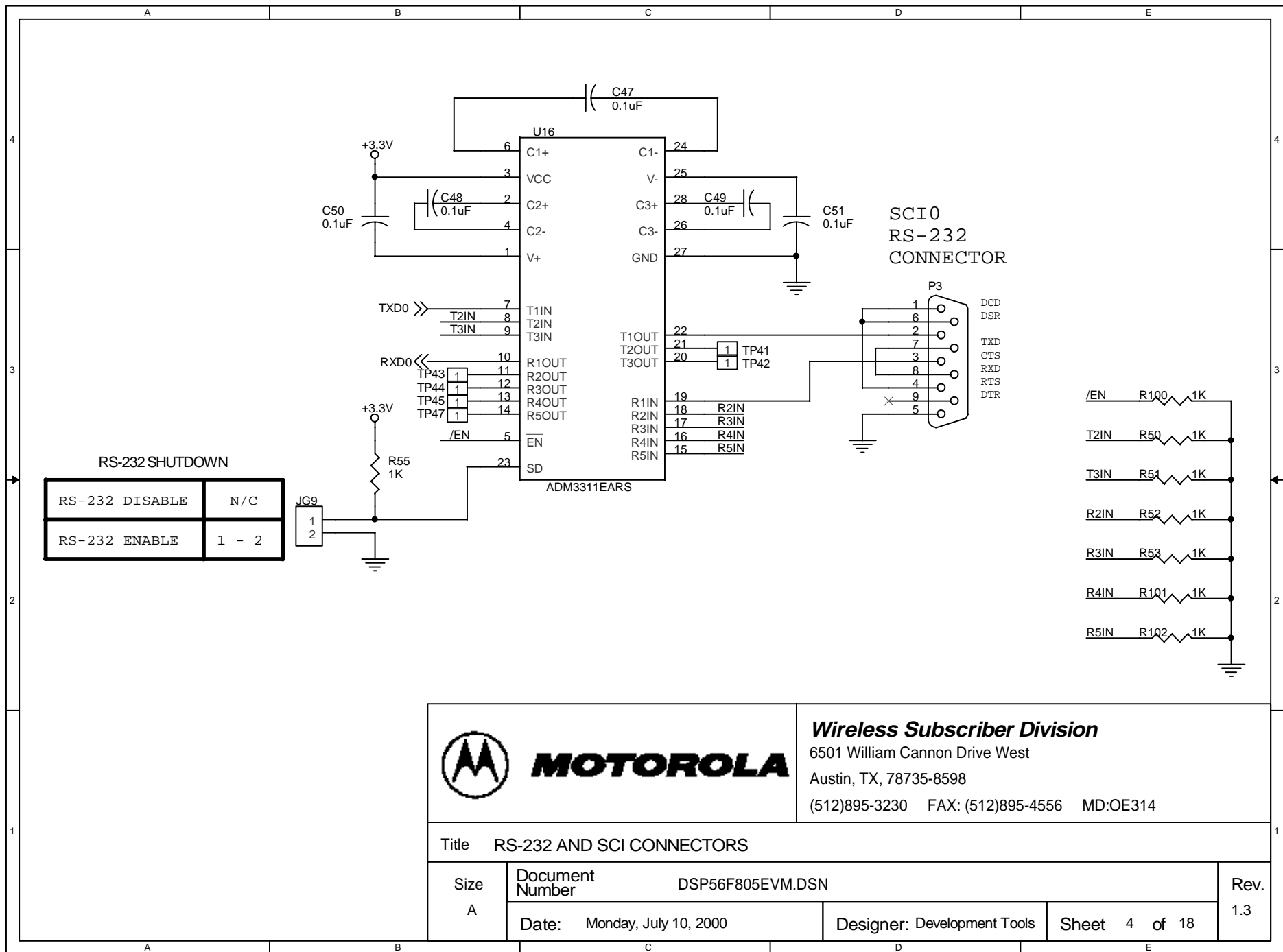
DSP56F805EVM.DSN

Date: Monday, July 10, 2000

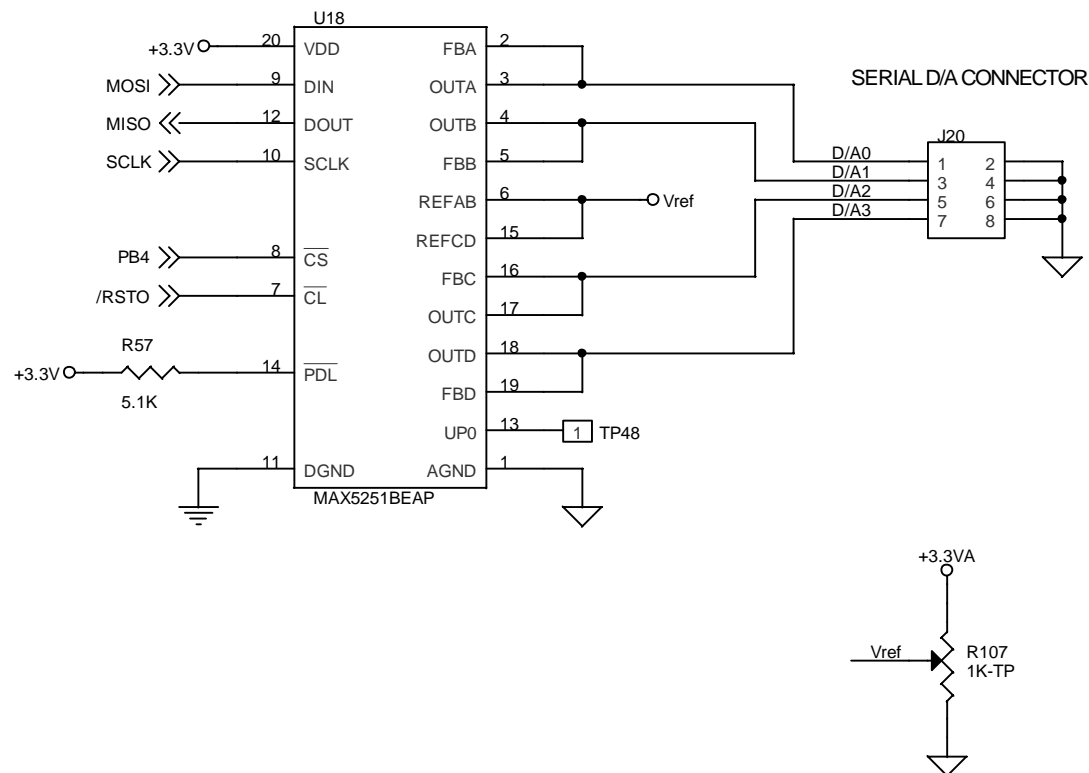
Designer: Development Tools

Sheet 3 of 18

Rev.
1.3



D/A



MOTOROLA

Wireless Subscriber Division

6501 William Cannon Drive West

Austin, TX, 78735-8598

(512)895-3230 FAX: (512)895-4556 MD:OE314

Title DEBUG SERIAL D/A CONVERTER

Size
A

Document
Number

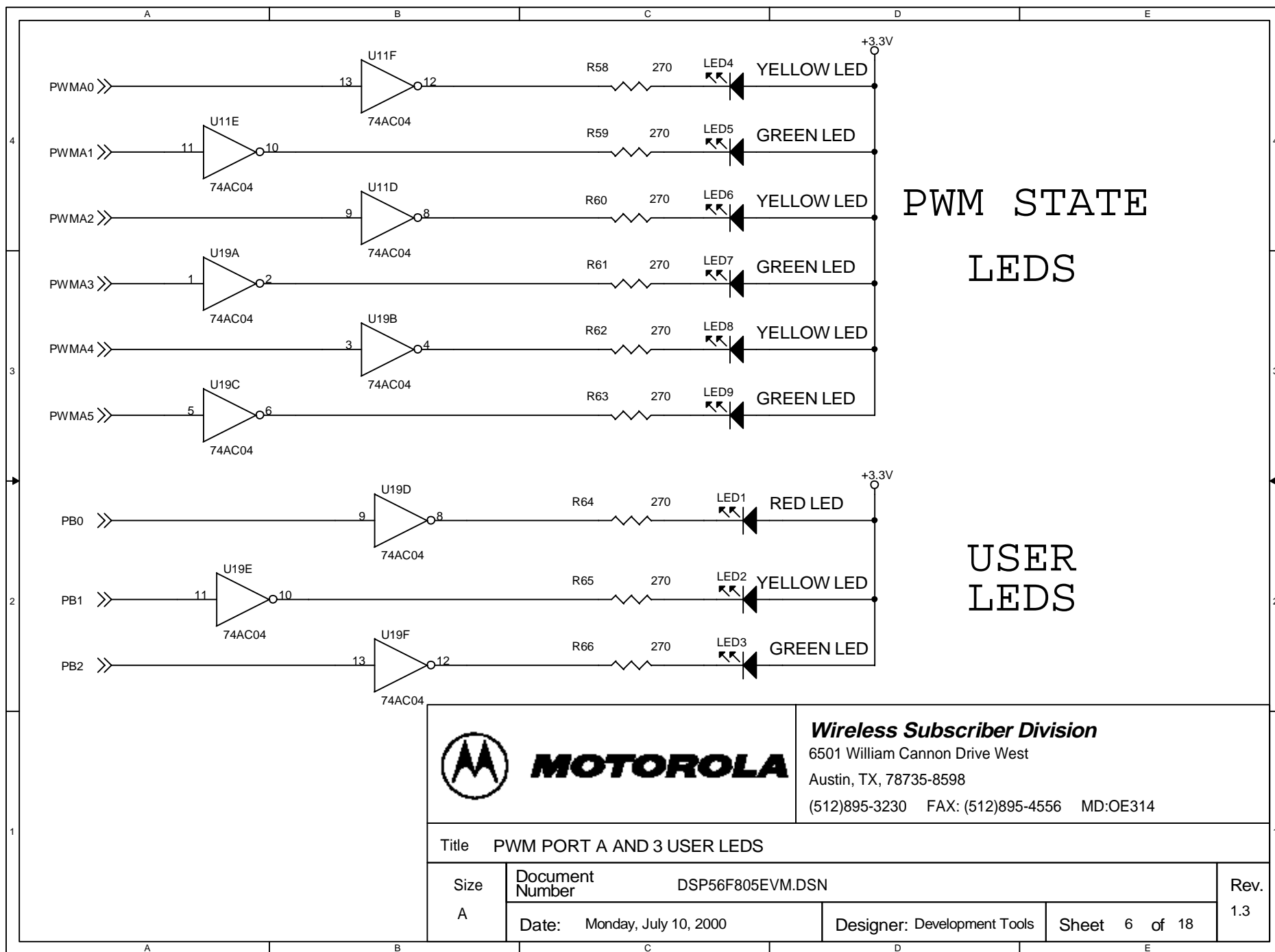
DSP56F805EVM.DSN

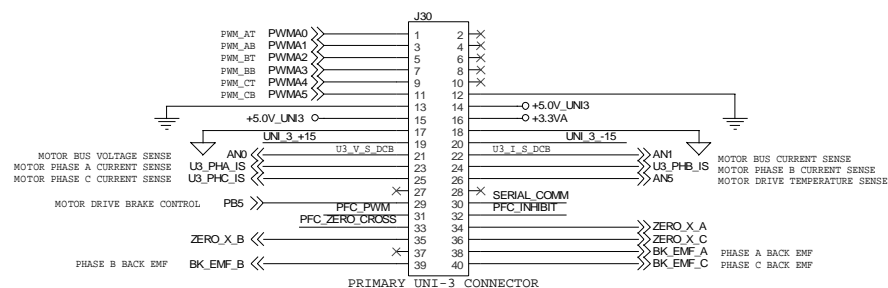
Date: Monday, August 13, 2001

Designer: Development Tools

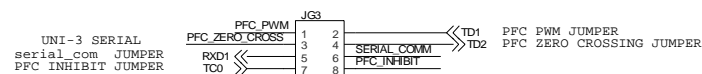
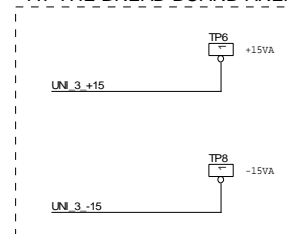
Sheet 5 of 18

Rev.
1.3

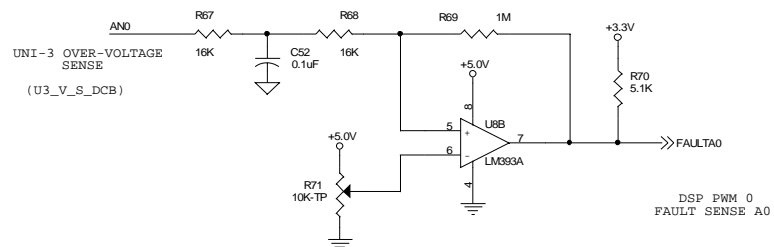




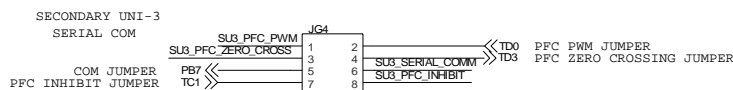
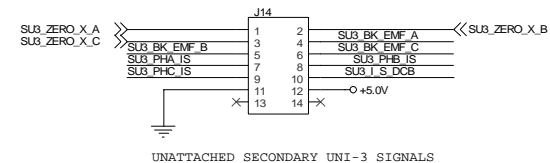
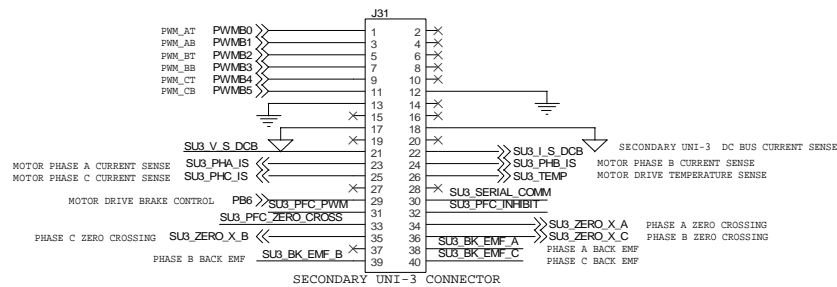
UNI-3 +/- 15 VOLT ANALOG AT THE BREAD BOARD AREA



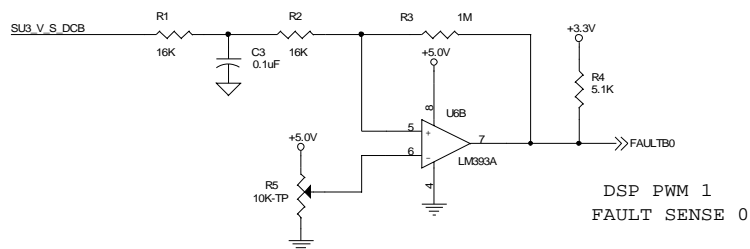
PRIMARY UNI-3 OVER-VOLTAGE FAULT DETECTION




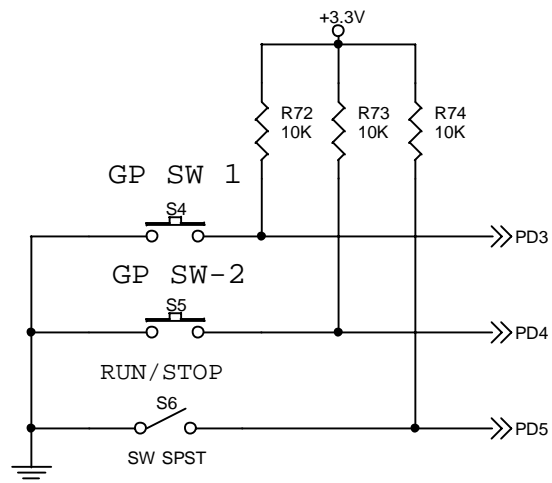
		Wireless Subscriber Division 6501 William Cannon Drive West Austin, TX, 78735-8598 (512)895-3230 FAX: (512)895-4556 MD:OE314	
		Title PRIMARY UNI-3 INTERFACE	
Size B	Document Number	DSP56F805EVM.DSN	
	Date:	Monday, July 10, 2000	Designer: Development Tools Sheet 7 of 18
		Rev. 1.3	



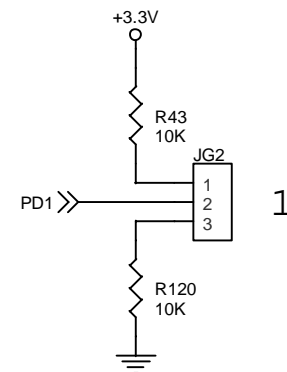
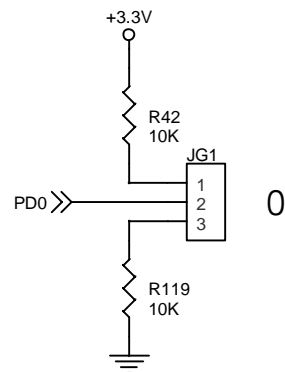
SECONDARY UNI-3 OVER-VOLTAGE FAULT DETECTION



 MOTOROLA		Wireless Subscriber Division 6501 William Cannon Drive West Austin, TX, 78735-8598 (512)895-3230 FAX: (512)895-4556 MD:OE314	
Title SECONDARY UNI-3 BACK-EMF, OVER-VOLTAGE AND OVER-CURRENT SENSE			
Size B	Document Number DSP56F805EVM.DSN		Rev 1.3
	Date: Monday, July 10, 2000	Designer: Development Tools	



GENERAL PURPOSE SWITCHES



SOFTWARE FEATURE JUMPERS



MOTOROLA

Wireless Subscriber Division

6501 William Cannon Drive West

Austin, TX, 78735-8598

(512)895-3230 FAX: (512)895-4556 MD:OE314

Title USER GENERAL PURPOSE SWITCHES AND JUMPERS

Size
A

Document
Number

DSP56F805EVM.DSN

Date: Monday, July 10, 2000

Designer: Development Tools

Sheet 9 of 18

Rev.
1.3