

# KW01 Development Hardware

Reference Manual

Document Number: KW01DHRM

Rev. 1

1/2014

**How to Reach Us:**

**Home Page:**  
[freescale.com](http://freescale.com)

**Web Support:**  
[freescale.com/support](http://freescale.com/support)

Information in this document is provided solely to enable system and software implementers to use Freescale products. There are no express or implied copyright licenses granted hereunder to design or fabricate any integrated circuits based on the information in this document.

Freescale reserves the right to make changes without further notice to any products herein. Freescale makes no warranty, representation, or guarantee regarding the suitability of its products for any particular purpose, nor does Freescale assume any liability arising out of the application or use of any product or circuit, and specifically disclaims any and all liability, including without limitation consequential or incidental damages. "Typical" parameters that may be provided in Freescale data sheets and/or specifications can and do vary in different applications, and actual performance may vary over time. All operating parameters, including "typicals," must be validated for each customer application by customer's technical experts. Freescale does not convey any license under its patent rights nor the rights of others. Freescale sells products pursuant to standard terms and conditions of sale, which can be found at the following address: [freescale.com/SalesTermsandConditions](http://freescale.com/SalesTermsandConditions).

Freescale, the Freescale logo, Altivec, CodeWarrior, ColdFire, ColdFire+, Energy Efficient Solutions logo, PowerQUICC, QorIQ, StarCore, Symphony, and VortiQa are trademarks of Freescale Semiconductor, Inc., Reg. U.S. Pat. & Tm. Off. CoreNet, Layerscape, QorIQ Qonverge, QUICC Engine, Tower, and Xtrinsic are trademarks of Freescale Semiconductor, Inc. All other product or service names are the property of their respective owners. ARM and Cortex are registered trademarks of ARM Limited. ARMnnn is the trademark of ARM Limited.

© 2013 Freescale Semiconductor, Inc.

Document Number: KW01DHRM  
Rev. 1  
1/2014



# Contents

---

## About This Book

Audience .....	v
Organization .....	v
Revision History .....	v

## Chapter 1 Safety Information

1.1	Regulatory Approval For Canada (IC RSS 210) .....	1-1
1.1.1	26 PART 5 – Appendix .....	1-1
1.2	Electrostatic Discharge Considerations .....	1-1
1.3	Disposal Instructions .....	1-1

## Chapter 2 KW01 Development Platform Overview and Description

2.1	Introduction .....	2-1
2.2	Features .....	2-2
2.2.1	TWR-RF Module .....	2-3
2.3	Driver Considerations .....	2-4

## Chapter 3 KW01-MRB

3.1	KW01-MRB Overview .....	3-1
3.1.1	Features .....	3-1
3.1.2	Form Factor .....	3-2
3.1.3	Board Level Specifications .....	3-3
3.2	Functional Description .....	3-5
3.2.1	RF Performance and Considerations .....	3-5
3.2.2	Clocks .....	3-6
3.3	Reset and JTAG Debug Port .....	3-8
3.3.1	Power Management .....	3-9
3.3.2	IO Connectors J14 and J15 .....	3-11
3.4	Schematic, Board Layout, and Bill of Material .....	3-13
3.4.1	Bill of Materials .....	3-16

## Chapter 4 PCB Manufacturing Specifications

4.1	Single PCB Construction .....	4-1
4.2	Panelization .....	4-2
4.3	Materials .....	4-2
4.4	Solder Mask .....	4-3
4.5	Silk Screen .....	4-3

4.6	Electrical PCB Testing .....	4-3
4.7	Packaging .....	4-3
4.8	Hole Specification/Tool Table .....	4-3
4.9	File Description.....	4-4

## About This Book

This manual describes Freescale's KW01-MRB development platform hardware. The MKW01Z128CHN development platform is a highly-integrated, cost-effective, system-in-package (SIP), sub-1GHz wireless node solution with an FSK, GFSK, MSK, or OOK modulation-capable transceiver and low-power ARM Cortex M0+CPU microcontroller. The highly integrated RF transceiver operates over a wide frequency range including 315 MHz, 433 MHz, 470 MHz, 868 MHz, 915 MHz, 928 MHz, and 955 MHz in the license-free Industrial, Scientific and Medical (ISM) frequency bands.

## Audience

This manual is intended for system designers.

## Organization

This document is organized into the following chapters.

Chapter 1	Safety Information — Highlights some of the FCC requirements.
Chapter 2	MKW01 Development Platform Overview and Description — Provides an overview of the two boards that comprise the MKW01 development platform.
Chapter 3	Modular Reference Board — This chapter details the KW01-MRB evaluation board based on the Freescale MKW01Z128CHN device.
Chapter 4	PCB Manufacturing Specifications — This chapter provides the specifications used to manufacture the various KW01-MRB printed circuit boards (PCBs).

## Revision History

The following table summarizes revisions to this document since the previous release (Rev 0.0).

**Revision History**

Location	Revision
Entire document	First public release

## Definitions, Acronyms, and Abbreviations

The following list defines the acronyms and abbreviations used in this document.

ADC	Analog to Digital Converter
AES	Advanced Encryption Standard
CTS	Clear to Send
DAC	Digital to Analog Converter
I2C	Inter-Integrated Circuit is a multi-master serial computer bus
ISM	Industrial Scientific Medical 2.4 GHz radio frequency band
JTAG	Joint Test Action Group
LGA	Land Grid Array
MAC	Media Access Controller
MCU	Microcontroller Unit
PCB	Printed circuit board
PiP	Platform in Package
PWM	Pulse-width modulation
RCM	Remote Control Module
REM	Remote Extender Board
RTS	Request to Send
SMA Connector	SubMiniature version “A” connector
SPI	Serial Peripheral Interface
SSI	Synchronous Serial Interface
TACT Switch	A switch that provides a slight “snap” or “click” to the user to indicate function.
TELCO	Telephone Company
USB	Universal Serial Bus
VCP	Virtual Com Port

# Chapter 1

## Safety Information Rev. 1

### 1.1 Regulatory Approval For Canada (IC RSS 210)

This device complies with Industry Canada licence-exempt RSS standard(s). Operation is subject to the following two conditions:

1. This device may not cause interference, and
2. This device must accept any interference, including interference that may cause undesired operation of the device.

#### 1.1.1 26 PART 5 – Appendix

Le présent appareil est conforme aux CNR d'Industrie Canada applicables aux appareils radio exempts de licence. L'exploitation est autorisée aux deux conditions suivantes:

1. l'appareil ne doit pas produire de brouillage, et
2. l'utilisateur de l'appareil doit accepter tout brouillage radioélectrique subi, même si le brouillage est susceptible d'en compromettre le fonctionnement.

### 1.2 Electrostatic Discharge Considerations

Although damage from electrostatic discharge (ESD) is much less common on these devices than on early CMOS circuits, normal handling precautions should be used to avoid exposure to static discharge. Qualification tests are performed to ensure that these devices can withstand exposure to reasonable levels of static without suffering any permanent damage.

All ESD testing is in conformity with the JESD22 Stress Test Qualification for Commercial Grade Integrated Circuits. During the device qualification ESD stresses were performed for the human body model (HBM), the machine model (MM) and the charge device model (CDM).

All latch-up test testing is in conformity with the JESD78 IC Latch-Up Test.

When operating or handling the development boards or components, Freescale strongly recommends using at least the grounding wrist straps plus any or all of the following ESD dissipation methods:

- Flexible fabric, solid fixed size, or disposable ESD wrist straps
- Static control workstations, static control monitors and table or floor static control systems
- Static control packaging and transportation materials and environmental systems

## 1.3 Disposal Instructions

This product may be subject to special disposal requirements. For product disposal instructions, refer to [www.freescale.com/productdisposal](http://www.freescale.com/productdisposal).

## Chapter 2

# MKW01 Development Platform Overview and Description

## 2.1 Introduction

The MKW01 development platform is an evaluation environment based on the Freescale MKW01Z128CHN device. The MKW01Z128CHN is a highly-integrated, cost-effective, system-in-package (SIP), sub-1GHz wireless node solution with an FSK, GFSK, MSK, or OOK modulation-capable transceiver and low-power ARM Cortex M0+CPU microcontroller. The highly integrated RF transceiver operates over a wide frequency range including 315 MHz, 433 MHz, 470 MHz, 868 MHz, 915 MHz, 928 MHz, and 955 MHz in the license-free Industrial, Scientific and Medical (ISM) frequency bands. This configuration allows users to minimize the use of external components.

The MKW01Z128CHN is targeted for the following low-power wireless applications:

- Automated Meter Reading
- Wireless Sensor Networks
- Home and Building Automation
- Wireless Alarm and Security Systems
- Industrial Monitoring and Control
- Wireless MBUS Standard (EN13757-4:2005)

Freescale supplements the MKW01Z128CHN with tools and software that include hardware evaluation and development boards, software development IDE and applications, drivers, custom PHY usable with Freescale's IEEE 802.15.4 compatible MAC, and an available wireless MBUS solution.

Features are listed in [Section 2.2, “Features”](#).

## 2.2 Features

The MKW01 development platform is built around the concept of having a single daughter card (KW01-MRB) that contains the MKW01Z128CHN IC and all necessary I/O connections for use as a self-contained module or for connection to an application motherboard like the TWR-RF board.

[Figure 2-1](#) shows a photo of the KW01-MRB.

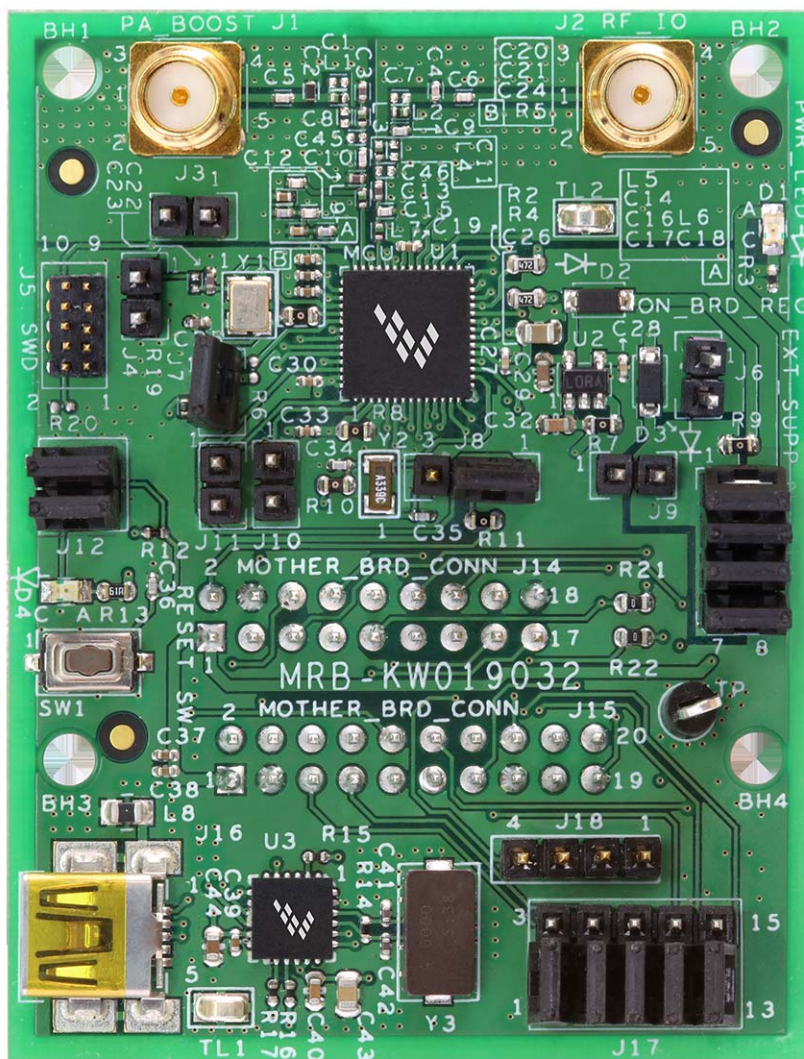


Figure 2-1. KW01-MRB

Features of the MKW01Z128CHN development platform include:

- Based on Freescale's low-cost MKW01Z128CHN sub-1GHz wireless node solution with an FSK, GFSK, MSK, or OOK modulation-capable transceiver and low-power ARM Cortex M0+CPU microcontroller, and a functional set of MCU peripherals into a 60-pin LGA package
- Reference design area with small footprint, low cost RF node
  - Power Amplifier Output
  - Unbalanced input/output port
  - Flexible RF-Front End for different bands operation
  - Programmable output power from -18 dBm to +17 dBm in 1dB steps
  - High Sensitivity: down to -120dBm at 1.2kbps
- 30 or 32 MHz reference oscillator depending on regional configuration
- SWD MCU debug port

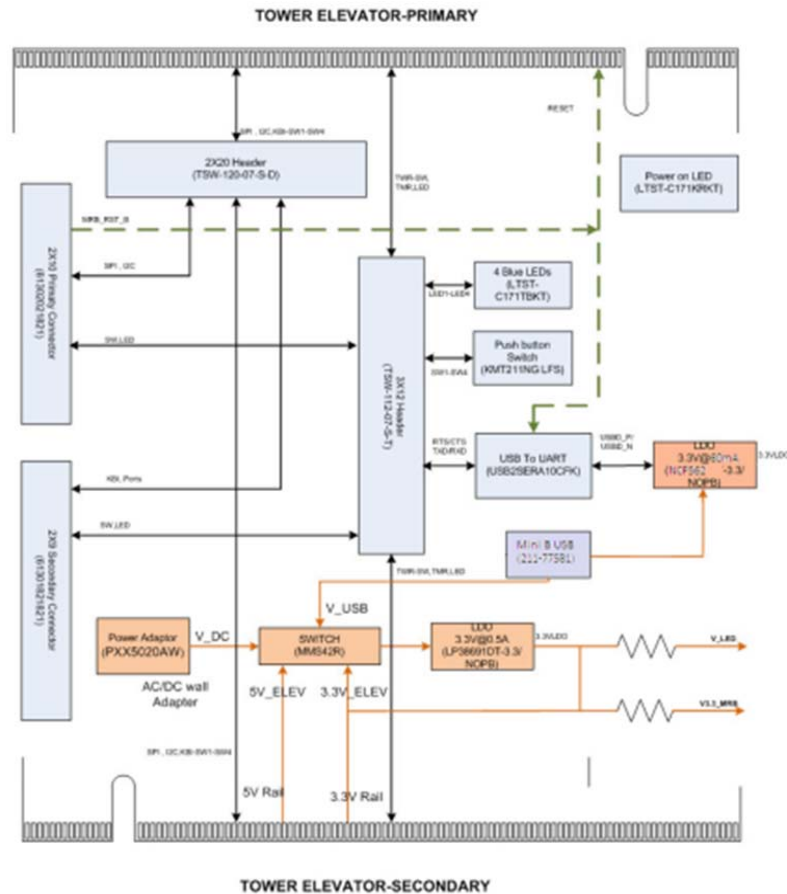
- Optional secondary 32.768 kHz crystal for accurate low power RTC timing
- Master reset switch
- Full power regulation and management
- KW01-MRB board provides
  - Required circuitry for MKW01Z128CHN - crystals and RF circuitry including SMA connectors for Power Amplifier Output and Input/Output RF port
  - Local power supply regulation
  - Access to all GPIO
  - Standalone or daughter card use modes
  - SWD connector
  - Onboard UART communication via mini-USB connector.
  - Two boards allow board-to-board packet communications.

### 2.2.1 TWR-RF Module

The KW01-MRB can run in the Freescale Tower System using the RF-Tower module (TWR-RF). Features of the TWR-RF module include:

- Standard sockets 100 mils J5 and J4 (2 x 9 and 2 x 10) to connect either a 1323x Modular Reference Board (1323x-MRB), a 12311 Modular Reference Board (12311-MRB) or a KW01 Modular Reference Board (KW01-MRB)
- Standard header 100 mils J1 (2 x 20) to enable signalling path to TWR primary and secondary connectors.
- Standard header 100 mils J6 (3 x 12) to enable signalling to on board HW and USB interface or to TWR system Hardware
- On-board regulator to provide external supply
- Four (4) user-controllable LEDs
- Four (4) user push-button switches
- Mini-USB Type mini-B connector

Figure 2-2 shows a simplified block diagram of the Freescale Tower RF system.



### Figure 2-2. Simplified TWR-RF Block Diagram

See the TWR-RF Reference Manual for more information about the RF-Tower module.

## 2.3 Driver Considerations

When users first connect a KW01-MRB to a PC, they may be prompted to install drivers. If the drivers do not automatically load, they can be found here if they have been previously installed:

C:\Program Files\Freescale\Drivers

If they haven't been downloaded previously, download the appropriate drivers and follow the instructions to complete driver installation from:

www.freescale.com

Follow the instructions as they appear on the screen to complete driver installation.

Be aware of the following:

- The boards use the FSL USB2SER USB to UART bridge converter.
- Download the appropriate driver and follow the instructions to complete driver installation from [www.freescale.com](http://www.freescale.com)

## Chapter 3

### KW01-MRB

#### 3.1 KW01-MRB Overview

The KW01-MRB is an evaluation board based on the Freescale MKW01Z128CHN device. The KW01-MRB provides a platform to evaluate the MKW01Z128CHN device, develop software and applications. The core device is accompanied by the 32 MHz reference oscillator crystal, RF circuitry including SMA for antenna connection and/or instrumentation, and supporting circuitry.

This basic board is intended as the core module for MKW01Z128CHN evaluation and application development and can be used in the following modes:

- Simple standalone evaluation platform
- Daughtercard to other Development Platform boards (TWR-RF, 1323x-RCM or 1323x-REM)
- Daughtercard to an application specific motherboard.

##### 3.1.1 Features

The KW01-MRB provides the following features:

- Small form factor (2.6 x 2 inches)
- 4-Layer, 0.034 inch thick FR4 board
- MKW01Z128CHN reference design area
  - LGA footprint and power supply bypass
  - 30 or 32 MHz reference oscillator crystal depending on regional configuration
  - RF components and layout
- Low cost RF node
  - Dual Output RF Path. Transmit/Receive (RFIO) and single Power Amplifier Transmitter (PA Boost) Output
  - Differential input/output port (typically used with a balun)
  - Programmable output power from -18 dBm to +17 dBm typical
  - High sensitivity of -120 dBm at 1.2 KBPS
  - SMA output connector for Transmit/Receive Output
  - SMA output connector for Power Amplifier
- Two connectors provided daughter card mounting
  - 20-Pin primary connector
  - 18-Pin secondary connector

- Provide main supply voltage to board
- Provide access to all MKW01Z128CHN GPIO pins
- Flexible board power supply
  - Onboard 3.3 V LDO series regulator
  - Regulator bypass jumper option
  - Separate external voltage source option
  - Power-on green LED
  - Jumpers allow various block current measurements
- 10-Pin SWD MCU debug port
- MKW01Z128CHN reset switch

### 3.1.2 Form Factor

Figure 3-1 shows the KW01-MRB connector and header locations.

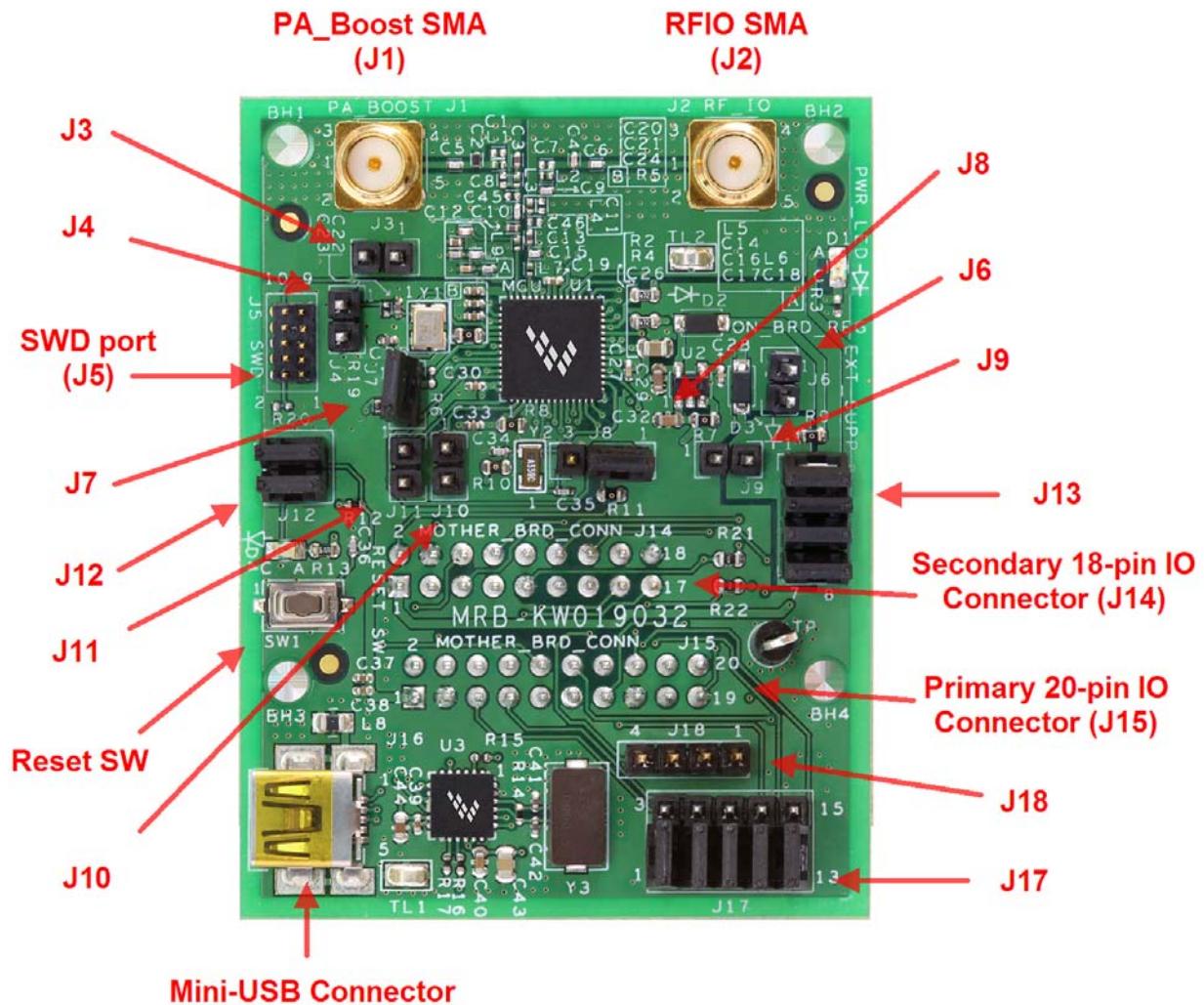


Figure 3-1. KW01-MRB

Figure 3-2 shows a footprint of the KW01-MRB with the location of the IO Headers J2 and J3. Users can create a motherboard to mount the KW01-MRB and headers J2 and J3 are used for that connection.

- Both headers have standard 0.10in / 2.54 mm pin spacing
- J2 is 20-pin and J3 is 18-pin
- Both are pin headers mounted on the bottom side of the KW01-MRB and are intended to plug into matching receptacles on the motherboard.

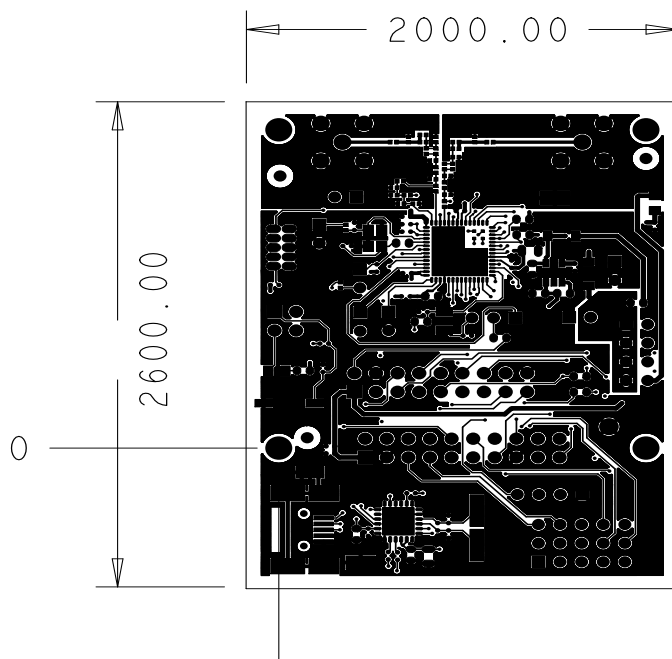


Figure 3-2. KW01-MRB Top Side (Component Side) Footprint

### 3.1.3 Board Level Specifications

Table 3-1. KW01-MRB Specifications

Parameter	Min	Typ	Max	Units	Notes/Conditions
<b>General</b>					
Size (PCB: X, Y)			66 x 51 2.60 x 2.01	mm inches	
Layer build (PCB)		0.8 0.031		mm inches	4-Layer
Dielectric material (PCB)					FR4
<b>Power</b>					
Voltage supply (DC)	3.5	5	16	V	Full module, into 3.3 V regulator, U2. Take care to not exceed power dissipation of U2.

Table 3-1. KW01-MRB Specifications (continued)

Parameter	Min	Typ	Max	Units	Notes/Conditions
Current consumption (All numbers typical)		31		mA	XCVR Standby (MCU running)
		45		mA	Receive
		80		mA	TX, +13 dBm via RFIO
		110		mA	TX, +17 dBm via PA_Boost
<b>Temperature</b>					
Operating temperature (see note)	-40	+25	+70	°C	• Operating temperature is limited to +70°C due to switches. Basic circuit is good for a maximum temperature of +85°C.
Storage temperature	-30	+25	+70	°C	
<b>RF Receiver</b>					
FSK Sensitivity		-105 to -120		dBm	
OOK Sensitivity		-112		dBm	
Adjacent channel Rejection (Offset = +/- 25 kHz or 50 kHz)		-42		dB	
2nd order Intercept point		+75		dBm	
3rd order Intercept point		+20		dBm	
RSSI dynamic range	-115		0		
<b>RF Transmitter</b>					
RF Power Output (RFIO pin)	-18		+13	dBm	Programmable in 1dB steps
RF Power Output (PA_Boost pin)		+17		dBm	
Adjacent channel Power (25KHz offset)			-37	dBm	
<b>Safety</b>					
UL					MRB is approved accordingly to the IEC 60950-1 and EN 60950-1, First Edition standards
<b>Environment</b>					
RoHS					MRB complies with the EU Directive 2002/95/EC of 27 January 2003
WEEE					MRB complies with the EU Directive 2002/95/EC of 27 January 2003

## 3.2 Functional Description

The KW01-MRB is built around Freescale's MKW01Z128CHN 56-pin LGA platform. [Figure 3-2](#) shows a simple block diagram. This board is intended as a simple evaluation platform and as a building block for

application development. The 4-layer board provides the MKW01Z128CHN with its required RF circuitry, 32 MHz reference oscillator crystal, and power supply bypassing. The layout for this base level functionality can be used as a reference layout by the user target board.

In addition to the base MKW01Z128CHN functionality, the KW01-MRB provides features to assist in debug, reset button, simple power manager, and expansion connectors for the GPIO. In the following sections, refer to:

- [Figure 3-1](#) for location of connectors and features
- [Figure 3-3](#) for the functional blocks
- [Figure 3-9](#) for the board schematic

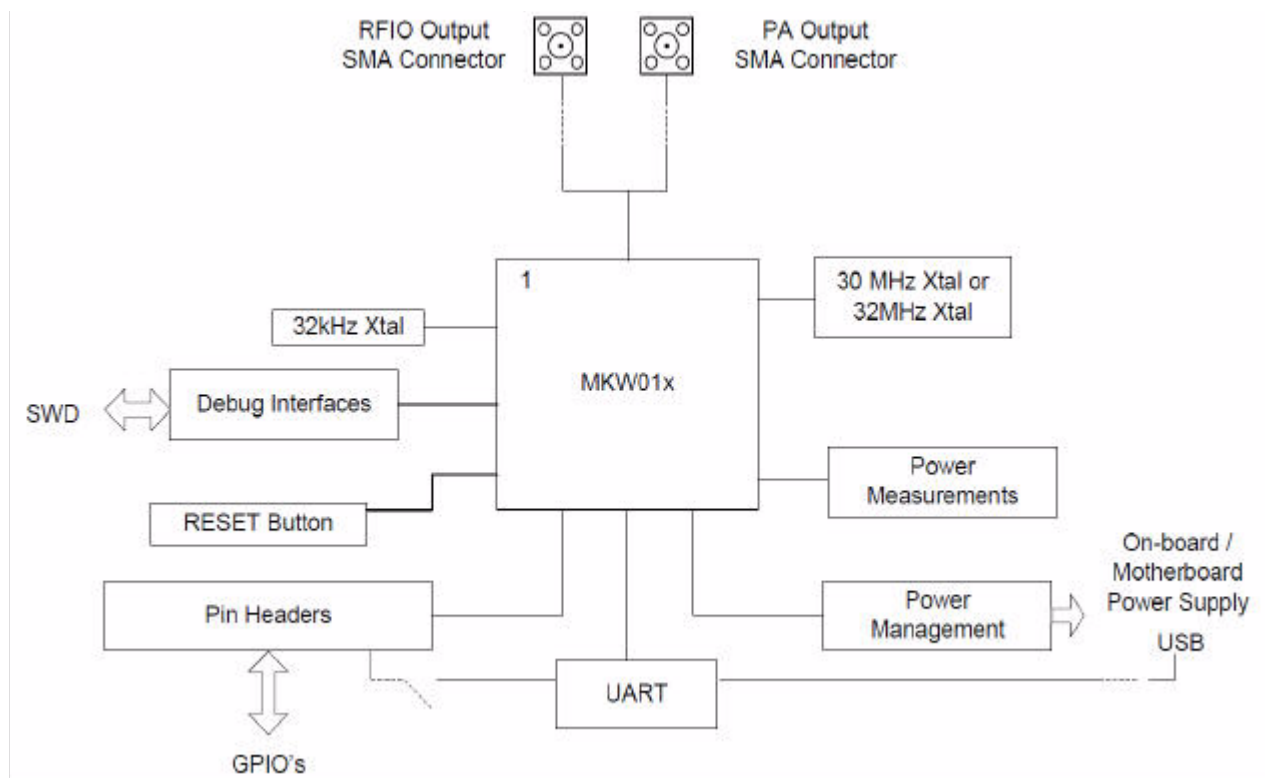


Figure 3-3. KW01-MRB Block Diagram

### 3.2.1 RF Performance and Considerations

The MKW01Z128CHN transceiver is a single-chip integrated circuit ideally suited for today's high performance ISM band RF applications. It is intended for use as a high-performance, low-cost FSK and OOK RF transceiver for robust, frequency agile, half-duplex bi-directional RF links. The MKW01Z128CHN is intended for applications over a wide frequency range, including the 433 MHz and 868 MHz European and the 902–928 MHz North American ISM bands.

- Output power –18 to +17 dBm, depending on output and setting

The KW01-MRB uses a flexible RF path topology that make it suitable for working in different frequency bands by replacing a minimum number of components while providing good RF performance. The tables

in Section 3.4.1, “Bill of Materials” show the different BOM according to different frequency bands of operation.

### NOTE

See the MKW01Z128CHN Data Sheet and Reference Manual for more RF design information.

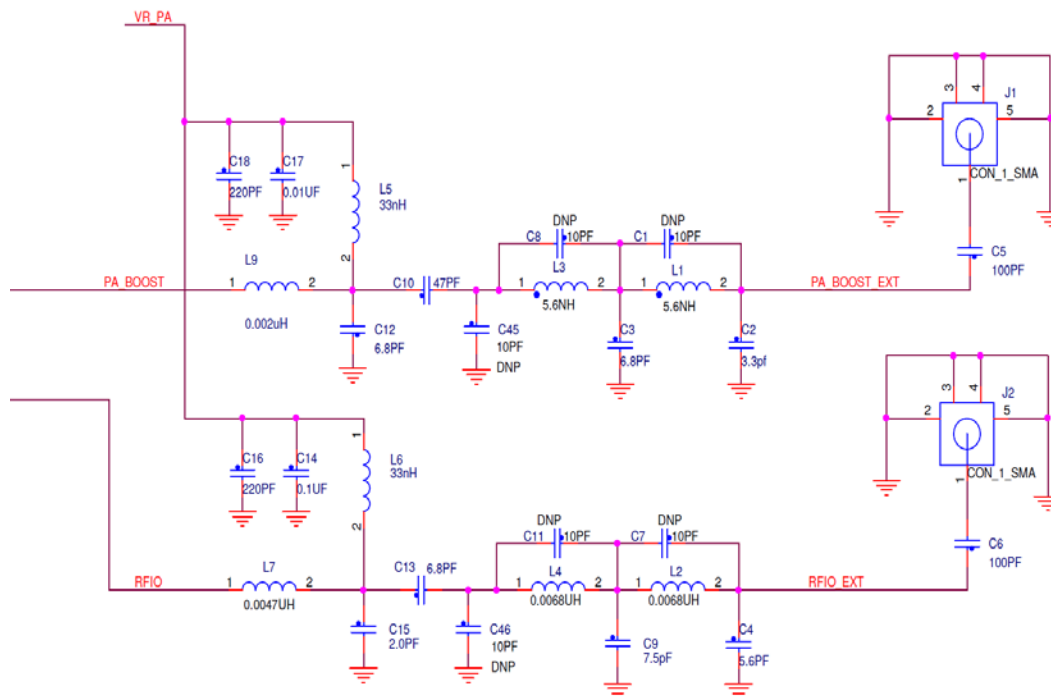


Figure 3-4. KW01-MRB RF Circuitry

## 3.2.2 Clocks

The MKW01Z128CHN provides for two clocks:

- 32 MHz Reference Oscillator — Figure 3-5 shows the external 32 MHz external crystal Y1. This mounted crystal must meet the MKW01Z128CHN specifications. (30 MHz in some board configurations)
  - Capacitors C22 and C25 provide the bulk of the crystal load capacitance.
  - Signal DIO5/CLKOUT can be used to supply an external clock to MCU die and to measure a the 32MHz oscillator frequency.
  - The KW01-MRB has provision for injecting an external 32 MHz clock source as an alternative to use of the onboard crystal:
    - The 0 Ohm jumper R5 should be removed to disconnect Y1.
    - C23 must be mounted
    - The external 32 MHz source is connected to 2-pin header J4.
- Optional 32.768 kHz Crystal Oscillator - Provision is also made for a secondary 32.768 kHz crystal Y2 (see Figure 3-6). This oscillator can be used for a low power accurate time base.

- The module comes provided with this Y2 crystal and its load capacitors C34 and C35.
- Load capacitors C34 and C35 provide the entire crystal load capacitance
- The 32 kHz oscillator components are supplied, but un-enabled. Zero-ohm resistors R10 and R11 enable use of IO signals PTA18 and PTA17 via the IO connector
- Use J8 to enable crystal signaling to MCU die from the DIO5 or from the 32kHz crystal.

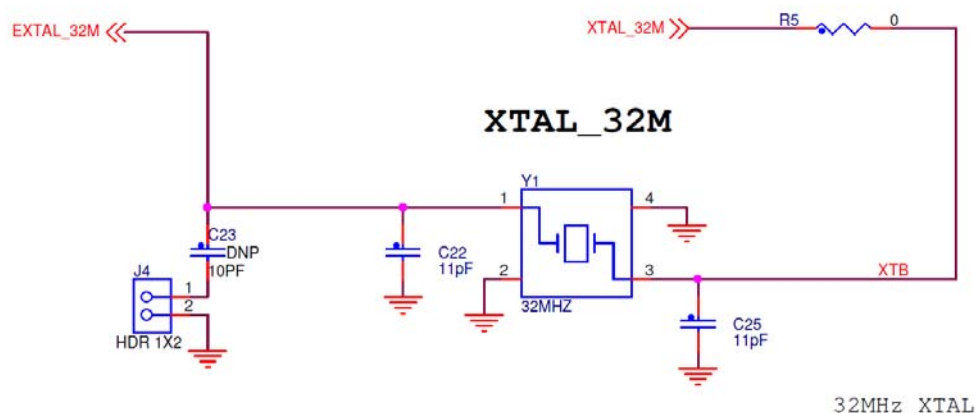


Figure 3-5. KW01-MRB 32 MHz Reference Oscillator Circuit

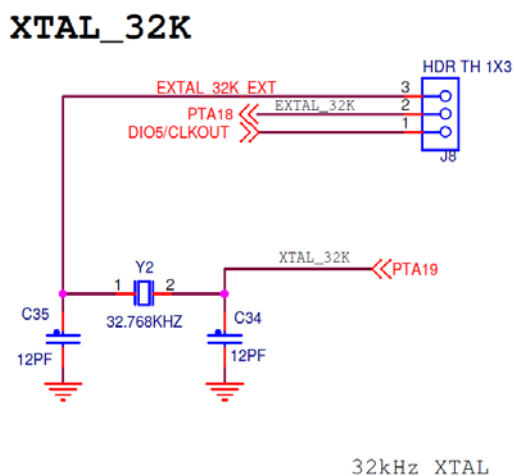


Figure 3-6. KW01-MRB 32.768 kHz Optional Oscillator Circuit

### 3.3 Reset and SWD Debug Port

The reset circuit and SWD port connector are shown in Figure 3-7. See Figure 3-1 for switch and header locations.

- Reset switch SW1 is active low and provides a hardware reset to the MKW01Z128CHN MCU die, which in turn, through a GPIO, can provide a RESET to the radio die by adding a jumper to J7. The Reset circuit also includes an LED for monitoring purposes.
- The 10-pin SWD 2x3 header J5 is provided to connect the MKW01 serial debug port to a standard Kinetis Series debug module.

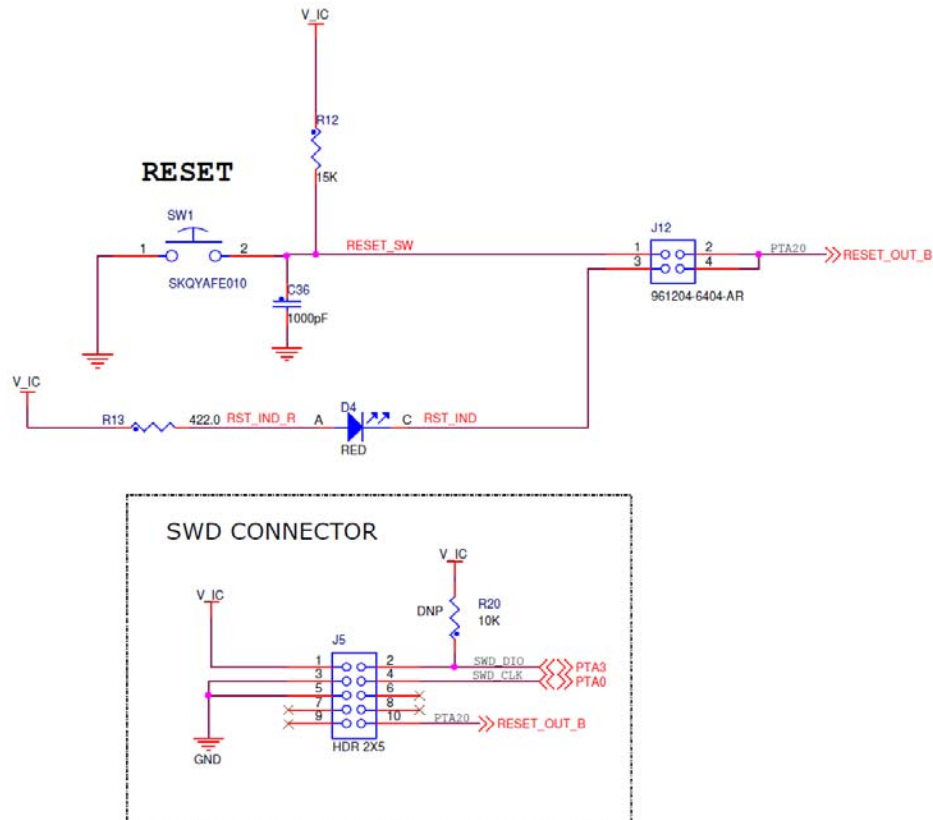
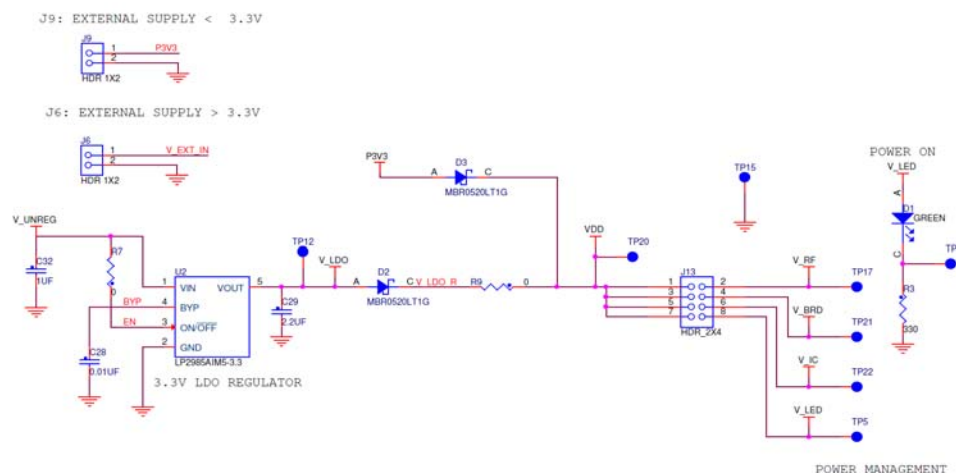


Figure 3-7. KW01-MRB Reset Switch and SWD Port

### 3.3.1 Power Management

The KW01-MRB power management circuit is shown in Figure 3-8.



**Figure 3-8. KW01-MRB Power Management Circuit**

Power to the KW01-MRB can be configured in several ways and the circuit has the following features:

- Board can be supplied through the IO headers (V\_BRD)
- Board can be supplied through the mini-USB connector (J16)
- Board can be supplied from an external DC supply (J6).
  - The external supply can be unregulated voltage and make use of the onboard 3.3 V LDO regulator.
- Board can be supplied from an external DC supply (J9).
  - The external supply voltage can be used directly without use of the LDO if its above 3.3Volts.
- 8-Pin 2x4 header J13 provides means to supply current to various board components and also measure current if desired
- Green LED D1 is available as a power indicator.

Table 3-2 shows the header configuration information for the various power supply modes.

#### NOTE

- The Freescale TWR-RF development boards can generate system power and supply the voltage to the KW01-MRB through pin V\_BRD on both J14 or J15.
- If an external supply is used via KW01-MRB header J5, current can flow to the TWR\_RF.
- Only one supply at a time should be connected to the platform.
- In all modes, the IO voltage supply to peripherals on any board on the TWR platform must be the same voltage (V\_BRD) as all other boards on the platform.

Table 3-2. KW01-MRB Power Configurations

Mode	Voltage Range	External Source J6	Ext Mode Source J9	Current Enable J13	Description
Source V_BRD	2.7 - 3.6 V <sup>1</sup>	Not used	Not used	<b>Short Pins 3-4</b> - short other desired supplies	<b>Normal Operation</b> - The KW01-MRB main supply is supplied by an external board through the J15 and J14 Headers
Mini USB -Using LDO	5 V	Mini-USB  J17 Short Pins 2-3	Not used	Short pins for all desired supplies	<b>External voltage w/regulation</b> - <ul style="list-style-type: none"> <li>Input range is set by the LDO regulator.</li> <li>3.3 V is supplied to KW01-MRB; do not use motherboard supply</li> <li>J14 and J15 Headers supply voltage to V_BRD pins when J13, Pins 3-4 are shorted</li> </ul>
External Source - Using LDO	3.5 - 16 V <sup>2</sup>	Connected - supplies DC Voltage  J17 Short Pins 1-2	Not used	Short pins for all desired supplies	<b>External voltage w/regulation</b> - <ul style="list-style-type: none"> <li>Input range is set by the LDO regulator.</li> <li>3.3 V is supplied to KW01-MRB; do not use motherboard supply</li> <li>J14 and J15 Headers supply voltage to V_BRD pins when J13, Pins 3-4 are shorted</li> </ul>
External Source - Not Using LDO	2.7 - 3.6 V	Not used	Connected - supplies DC Voltage	Short pins for all desired supplies	<b>External voltage w/o regulation</b> - <ul style="list-style-type: none"> <li>Input range is set by the onboard circuitry</li> <li>2.7 - 3.3 V is supplied to KW01-MRB</li> <li>J14 and J15 Headers supply voltage to V_BRD pins</li> </ul>

<sup>1</sup> The MKW01Z128CHN can run as low as 1.8 V

<sup>2</sup> Take care to not exceed power dissipation of U2. Typically, at room temperature, this voltage should not exceed 7.5 V. At max temperature (70°C), it should not exceed 5.5 V during full power: +17 dBm, transmit, 8 V and 12 V, respectively, at +13 dBm, transmit.

Header J13 provides means to disable different sub-circuits or measure current and connections are described in [Table 3-3](#). Current measurements can be made by inserting a current meter in place of a designated jumper.

**Table 3-3. Power Distribution Header J13**

Supply Designation	Header Pins	Description
V_RF	1 - 2	Supply voltage to MKW01Z128CHN -Radio die <ul style="list-style-type: none"> <li>• Normally jumpered</li> <li>• Supplies only the MKW01Z128CHN Radio die</li> </ul> Normally always same voltage as V_BRD
V_BRD	3 - 4	Supply voltage connected to IO Connectors J2 and J3 - <ul style="list-style-type: none"> <li>• This supplies J2 and J3 if an external MRB supply is used</li> <li>• This voltage supplies the MRB if the motherboard is the main power</li> <li>• This connection is normally always jumpered</li> </ul>
V_IC	5 - 6	Supply voltage to MKW01Z128CHN -MCU die <ul style="list-style-type: none"> <li>• Normally jumpered</li> <li>• Supplies only the MKW01Z128CHN MCU die</li> <li>• Normally always same voltage as V_BRD</li> </ul>
V_LED	7 - 8	Supply voltage to power indicator LED <ul style="list-style-type: none"> <li>• Jumper to use indicator or IR blaster</li> <li>• Leave open for lowest power</li> </ul>

### 3.3.2 IO Connectors J14 and J15

The two IO connectors J14 and J15 are standard 100 mil pin headers mounted on the back (non-component side) of the KW01-MRB. The primary header J15 is 20-pin and the secondary header J14 is 18-pin, and they are mounted physically in such a manner as to prevent reverse insertion of the KW01-MRB into a motherboard receptacle (see [Figure 3-2](#)). When the TWR-RF, 1323x-RCM or 1323x-REM or custom motherboard is plugged into these connectors, most GPIOs on the MKW01Z128CHN MCU can be accessed via the IO connectors.

- V\_BRD is the connector supply voltage.
  - Depending on power supply configuration, this voltage may supply the KW01-MRB from the motherboard or the KW01-MRB may supply this voltage to the motherboard. See [Section 3.3.1, “Power Management”](#).
  - Peripherals connecting to the MKW01Z128CHN IO and the MKW01Z128CHN supply should all use this same voltage.

#### NOTE

The TWR-RF, 1323x-RCM and 1323x-REM and KW01-MRB are supplied configured for the motherboard to supply main power.

- Some of the GPIO are shared with onboard devices. Check for the KW01-MRB schematic and [Table 3-4](#) and [Table 3-5](#) for any conflict.
- SWD port signals PTA3 and PTA4 are NOT connected to the IO headers to prevent possible interference with the debug port.

Table 3-4. 20 Pin Connector

Header Pin Number	MKW01Z128CHN Pin Name	Description
1	V_BRD	VDD supply to module
2	NC	
3	GND	Module ground
4	NC	
5	PTA1/RXD	UART RXD input to MCU
6	NC	
7	PTA2/TXD	UART TXD Output from MCU
8	NC	
9	PTB0	GPIO / Timer IO
10	PTA20/Reset	MCU Reset_out_b
11	PTC2/SDA	I2C Bus data signal (SDA)
12	PTB2	UART flow control RTS input into MCU (implemented in Freescale software)
13	PTC1/SCL	I2C Bus clock signal (SCL)
14	PTB17	UART flow control CTS output from MCU (implemented in Freescale software)
15	GND	Module ground
16	DIO5/CLKOUT	Reference Crystal Oscillator
17	PTA4	Port A Bit 4
18	PTD5	Port D Bit 5
19	PTD6	Port D Bit 6
20	PTD7	Port D Bit 7

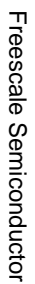
Table 3-5. 18 Pin Connector

Header Pin Number	MKW01Z128CHN Pin Name	Description
1	V_BRD	VDD supply to module
2	PTA18/EXTAL_32K	Port A Bit 18- signal shared with 32.768 kHz oscillator
3	PTA19/XTAL_32K	Port A Bit 19- signal shared with 32.768 kHz oscillator
4	GND	Module Ground
5	DIO0	Transceiver GPIO Bit 0
6	DIO3	Transceiver GPIO Bit 3
7	PTE16	Port E Bit 16
8	PTB1	Port B Bit 1
9	PTC3	Port C Bit 3


Table 3-5. 18 Pin Connector

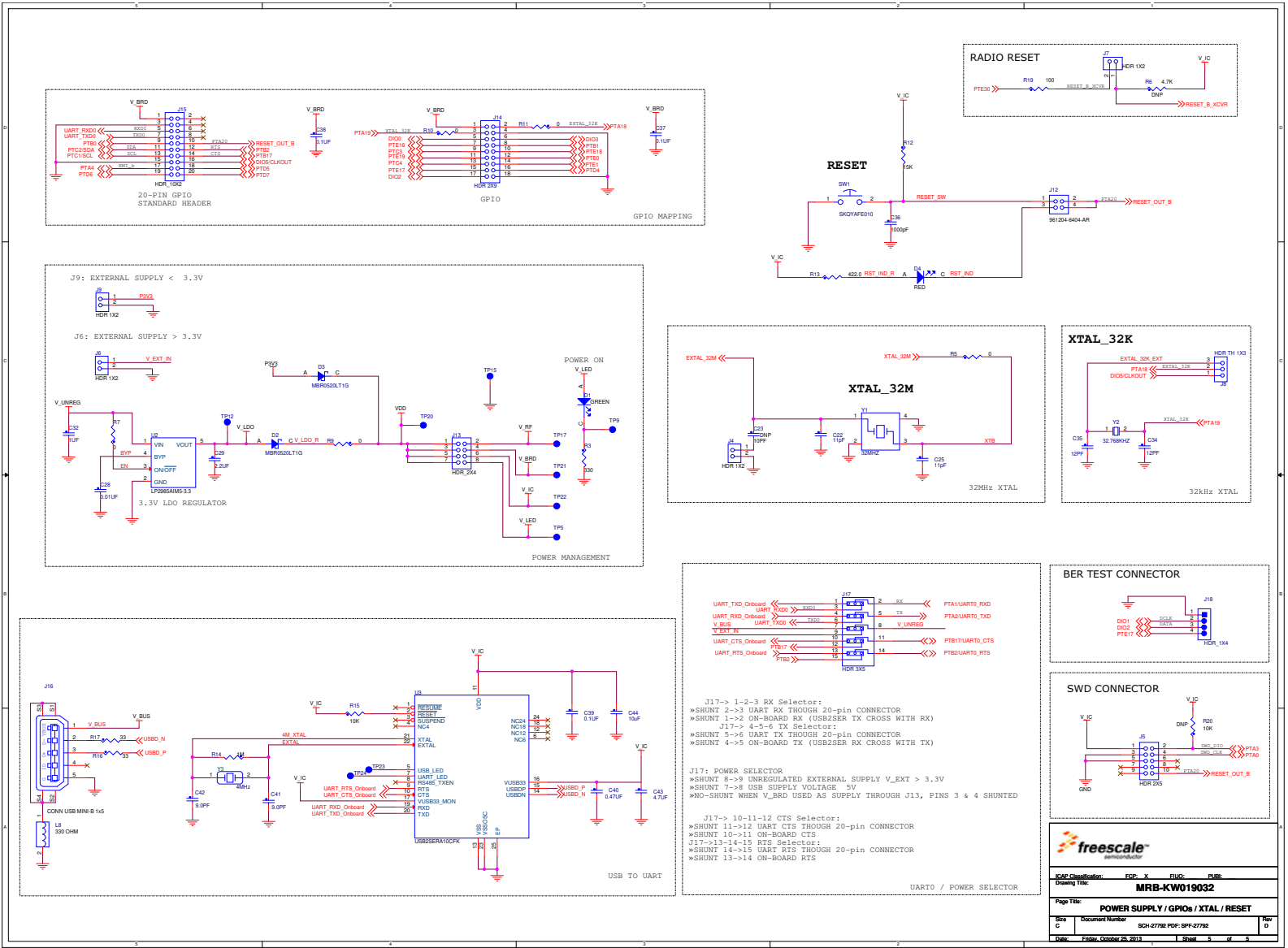
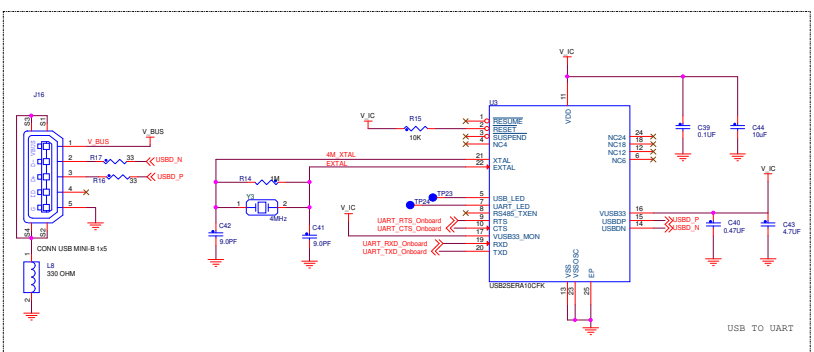
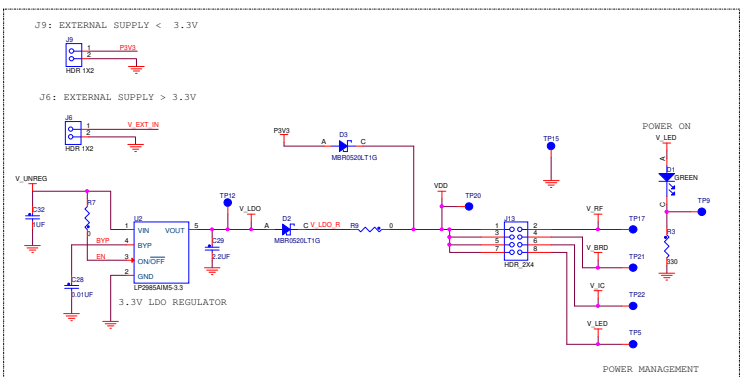
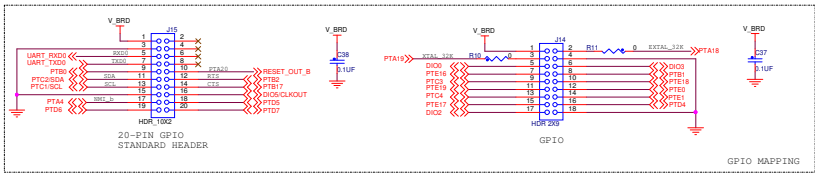
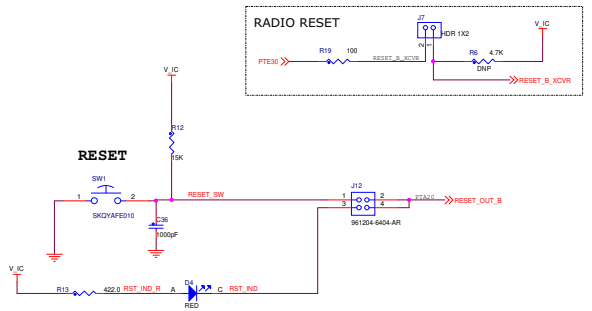
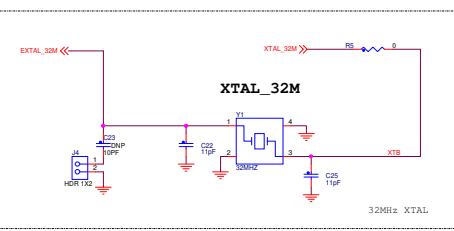
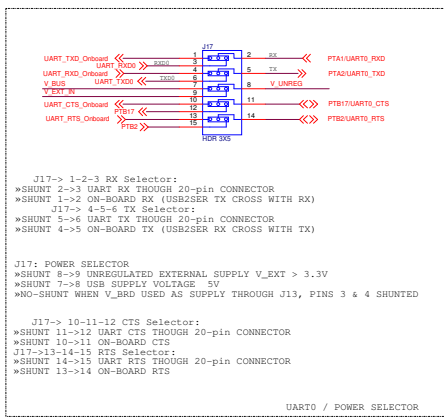
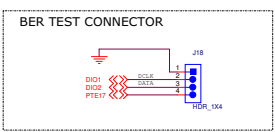
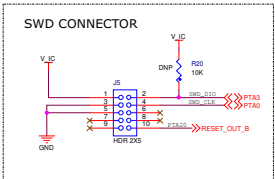
Header Pin Number	MKW01Z128CHN Pin Name	Description
10	PTE18	Port E Bit 18
11	PTE19	Port E Bit 19
12	PTE0	Port E Bit 0
13	PTC4	Port C Bit 4
14	PTE1	Port E Bit 1
15	PTE17	Port E Bit 17
16	PTD4	Port D Bit 4
17	DIO2	Transceiver GPIO Bit 2
18	GND	Module ground

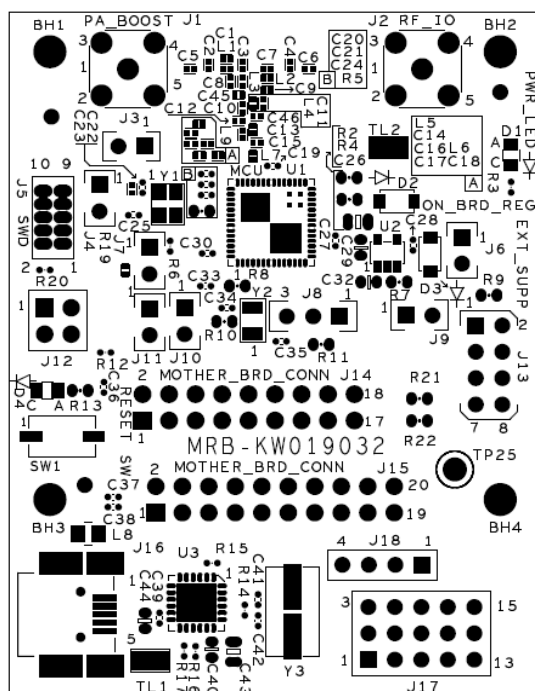
## KW01 Development Hardware Reference Manual, Rev. 1



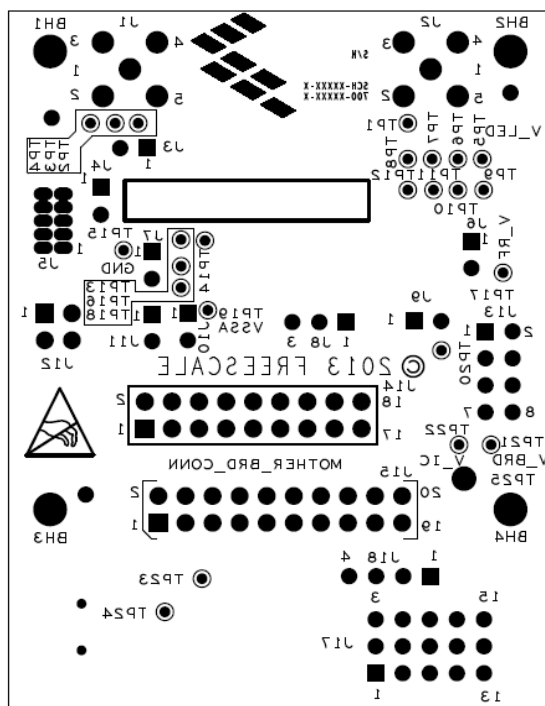
**Figure 3-9. KW01-MRB Schematic**

			
Doc Classification:	EXP - X	PROD -	PRE-
Project Title:	MRB-KW019032		
Page Title:	POWER SUPPLY / GPIOs / XTAL / RESET		
Doc C	Document Number	SCM-07790 PDF: 07790	Rev D
Date:	Friday, October 20, 2012	Sheet	5 of 5





**Figure 3-10. Modular Reference Board PCB Component Location (Top View)**



**Figure 3-11. Modular Reference Board PCB Test Points**

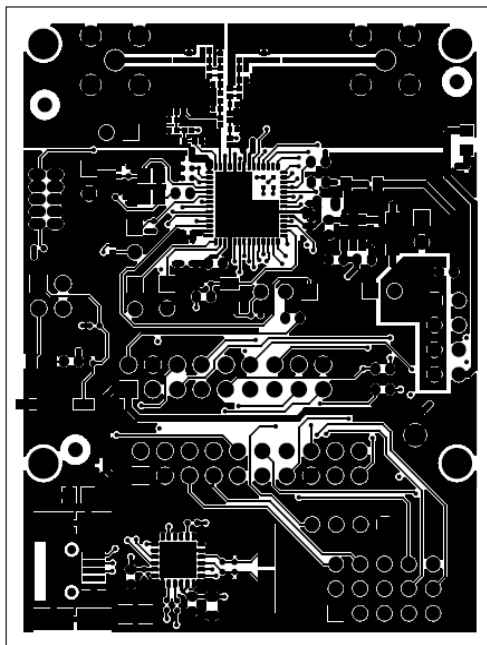


Figure 3-12. Modular Reference Board PCB Layout (Top View)

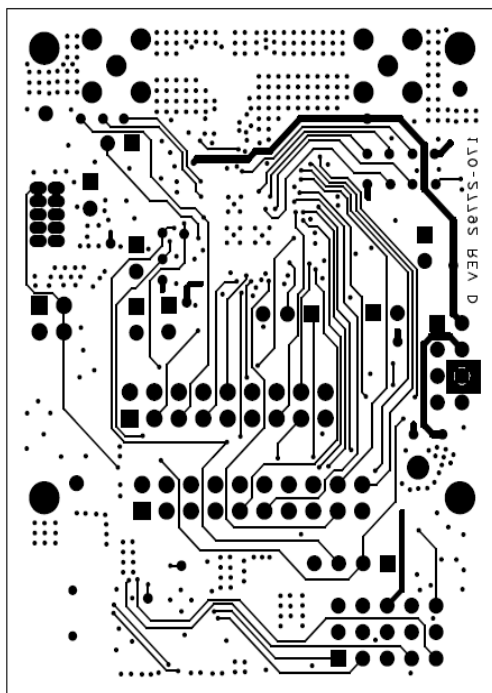


Figure 3-13. Modular Reference Board PCB Layout (Bottom View)

### 3.4.1 Bill of Materials

The following three tables detail the bill of materials. [Table 3-6](#) details the common parts for all frequency bands, [Table 3-7](#) details the parts for the 915 and 868 MHz frequency bands, [Table 3-8](#) details the parts for the 433 MHz frequency band and [Table 3-9](#) details the parts for the 315 MHz frequency band.

**Table 3-6. Bill of Materials (Common parts for all MRB-KW01xxyyZZ bands.)**

Item	Qty	Reference	Value	Description	Mfg. Name	Mfg. Part Number
1	4	BH1,BH2, BH3,BH4	125	NON-PLATED MOUNTING HOLE 125 DRILL / 160 KEEPOUT NO PART TO ORDER		
2	3	C1,C7,C2 3 (DNP)	10PF	CAP CER 10PF 50V 5% C0G 0402	Avx	04025A100JAT2A
3	2	C5,C6	100PF	CAP CER 100PF 50V 5% C0G 0402	Kemet	C0402C101J5GAC
4	10	C14,C19, C20,C21, C24,C30, C31,C33, C37,C38	0.1UF	CAP CER 0.1UF 16V 10% X7R 0402	Kemet	C0402C104K4RAC
5	2	C16,C18	220PF	CAP CER 220PF 50V 5% C0G 0402	Kemet	C0402C221J5GAC
6	3	C17,C27, C28	0.01UF	CAP CER 0.01UF 50V 10% X7R 0402	Murata	GCM155R71H103KA55D
7	2	C22,C25	11PF	CAP CER 11PF 50V 1% C0G 0402	Avx	0425U110FAT2A
8	2	C34,C35	12PF	CAP CER 12PF 50V 5% C0G 0402	Murata	GRM1555C1H120JZ01D
9	1	C26	10UF	CAP CER 10UF 10V 10% X5R 0805	Murata	GRM21BR61A106KE19_
10	1	C29	2.2UF	CAP CER 2.2UF 10V 10% X7R 0603	Taiyo Yuden	LMK107B7225KA-T
11	1	C32	1UF	CAP CER 1.0UF 10V 10% X7R 0603	Murata	GRM188R71A105KA61D
12	1	C36	1000pF	CAP CER 1000PF 50V 5% C0G 0402	Murata	GRM1555C1H102JA01D
13	1	D1	GREEN	LED GRN SGL 30MA SMT 0805	Lite On	LTST-C171KGKT
14	2	D2,D3	MBR0520LT 1G	DIODE SCH 0.5A 20V SOD-123	On Semiconductor	MBR0520LT1G
15	1	D4	RED	LED RED CLEAR SGL 30MA SMT 0805	Lite On	LTST-C171KRKT
16	2	J1,J2	CON_1_SM A	CON 1 COAX SMA SKT TH -- 376H AU	Samtec	SMA-J-P-H-ST-TH1
17	7	J3,J4,J6,J 7,J9,J10, J11	HDR 1X2	HDR 1X2 TH 100MIL SP 330H SN 115L	Samtec	TSW-102-07-T-S

Table 3-6. Bill of Materials (Common parts for all MRB-KW01xxyyZZ bands.)

Item	Qty	Reference	Value	Description	Mfg. Name	Mfg. Part Number
18	1	J5	HDR 2X3	HDR 2X3 TH 100MIL CTR 335H AU 95L	Samtec	TSW-103-07-S-D
19	1	J8	HDR TH 1X3	HDR 1X3 TH 100MIL SP 339H AU 100L	Samtec	TSW-103-07-G-S
20	1	J12	961204-6404-AR	HDR 2X2 TH 100MIL CTR 323H AU 130L	3m	961204-6404-AR
21	1	J13	HDR_2X4	HDR 2X4 TH 100MIL CTR 330H AU 100L	Samtec	TSW-104-07-S-D
22	1	J14	HDR 2X9	HDR 2X9 TH 100MIL CTR 330H AU	Samtec	TSW-109-07-S-D
23	1	J15	HDR_10X2	HDR 2X10 TH 100MIL CTR 330H AU 100L	Samtec	TSW-110-07-S-D
24	1	L6	33nH	IND -- 0.033UH@100MHZ 200MA 5% 0402	Murata	LQG15H33NJ02D
25	2	R2,R4	4.7K	RES MF 4.7K 1/10W 5% 0603	Vishay Intertechnology	CRCW06034K70JNEA
26	1	R3	330	RES MF 330 OHM 1/16W 5% 0402	Vishay Intertechnology	CRCW0402330RJNED
27	8	R5,R7,R8,R9,R10,R11,R21,R22	0	RES MF ZERO OHM 1/10W -- 0603	Vishay Intertechnology	CRCW06030000Z0EA
28	1	R6 DNP	4.7K	RES MF 4.7K 1/16W 1% 0402	Koa Speer	RK73H1ETTP4701F
29	1	R12	15K	RES MF 15K 1/16W 5% 0402	Vishay Intertechnology	CRCW040215K0JNED
30	1	R13	422	RES MF 422 OHM 1/10W 1% 0603	Yageo America	RC0603FR-07422RL
31	1	SW1	SW_MOM	SW SPST MOM PB 50MA 12V SMT	Alps Electric (Usa) Inc.	SKQYAFE010
32	2	TL1,TL2,	TESTLOOP	TEST POINT PAD SIZE 3.4MM X 1.8MM SMT	Keystone Electronics	5015
33	24	TP1,TP2,TP3,TP4,TP5,TP6,TP7,TP8,TP9,TP10,TP11,TP12,TP13,TP14,TP15,TP16,TP17,TP18,TP19,TP20,TP21,TP22,TP23,TP24	TPAD_040	TEST POINT PAD 40MIL DIA SMT, NO PART TO ORDER	Notacomponent	NOTACOMPONENT

Table 3-6. Bill of Materials (Common parts for all MRB-KW01xxyyZZ bands.)

Item	Qty	Reference	Value	Description	Mfg. Name	Mfg. Part Number
34	1	U1	MKW01Z128	IC MCU ARM 48MHZ 128KB FLASH 16KB RAM 1.8-3.6V LGA60	Freescale Semiconductor	MKW01Z128CHN
35	1	U2	LP2985AIM5-3.3	IC VREG LDO 3.3V 150MA 3.8-16V SOT-23-5	National Semiconductor	LP2985AIM5-3.3/NOPB
36	1	Y1	32MHZ	XTAL 32MHZ 9PF -- SMT 3.2X2.5MM	Ndk	EXS00A-CS02368
36	1	Y1 (Optional for JA variant)	30MHZ	XTAL 30MHZ 8PF -- SMT 3.2X2.5MM	Ndk	NX3225SA-30MHZ-STD-C SR-3
37	1	Y2	32.768KHZ	XTAL 32.768KHZ SMT ROHS COMPLIANT	Epson Electronics	FC-135 32.7680KA-A3
38	1	Y3	4MHz	XTAL 4MHZ -- -- AUTO SMT	NDK	NX8045GE-4.000M-STD-C JL-6
39	1	U3	USB2SERA10CFK	IC XCVR USB TO UART CONV 12MBPS 3-5V QFN24	FREESCALE SEMICONDUCTOR	USB2SERA10CFK
40	1	TP25	TESTLOOP_BLACK	TEST POINT PC MULTI PURPOSE BLK TH	KEYSTONE ELECTRONICS	5011
41	1	R14	1M	RES MF 1.0M 1/16W 1% AEC-Q200 0402	VISHAY INTERTECHNOLOGY	CRCW04021M00FKED
42	1	R15	10K	RES MF 10K 1/16W 5% 0402	VISHAY INTERTECHNOLOGY	CRCW040210K0JNED
43	2	R16, R17	33	RES MF 33.0 OHM 1/16W 1% 0402	THYE MING TECH CO LTD	CR-02FL6---33R
44	1	R19	100	RES MF 100 OHM 1/16W 1% 0402	THYE MING TECH CO LTD	CR-02FL6--100R
45	1	R20 DNP	10K	RES MF 10K 1/16W 5% 0402	VISHAY INTERTECHNOLOGY	CRCW040210K0JNED
46	1	C40	0.47UF	CAP CER 0.47UF 16V 10% X7R 0603	KEMET	C0603C474K4RAC
47	2	C41,C42	9.0PF	CAP CER 9.0PF 50V +/- 0.5PF C0G 0402	MURATA	GRM1555C1H9R0DZ01D
48	1	C43	4.7UF	CAP CER 4.7UF 25V 10% X5R 0805	VENKEL COMPANY	C0805X5R250-475KNP
49	1	C44	10uF	CAP CER 10UF 10V 20% X5R 0603	TAIYO YUDEN	LMK107BJ106MALTD
50	1	J16	CONN USB MINI-B 1x5	CON 1X5 USB MINI-B RA SHLD SKT SMT 0.8MM SP 159H AU	Molex	67503-1020
51	1	J17	HDR 3X5	HDR 3X5 TH 100MIL CTR 338H SN 100L	SAMTEC	TSW-105-07-T-T

**Table 3-6. Bill of Materials (Common parts for all MRB-KW01xxyyZZ bands.)**

Item	Qty	Reference	Value	Description	Mfg. Name	Mfg. Part Number
52	1	J18	HDR_1X4	HDR 1X4 TH 100MIL SP 205H AU 130L	SAMTEC	TSW-104-05-G-S
53	1	L8	330 OHM	IND FER BEAD 330OHM@100MHZ 2.5A -- SMT	TDK	MPZ2012S331A

**Table 3-7. Bill of Materials (MRB-KW0190yyZZ frequency bands)**

Item	Qty	Reference	Value	Description	Mfg. Name	Mfg. Part Number
1	1	C2	3.3pf	CAP CER 3.3PF 25V 0.1PF -- 0402	AVX	04023J3R3BBSTR
2	1	C4	5.6PF	CAP CER 5.6PF 50V +/-0.25PF C0G CC0402	MURATA	GJM1555C1H5R6CB01D
3	3	C3,C12,C13	6.8PF	CAP CER 6.8PF 50V 0.5PF C0G 0402	MURATA	GRM1555C1H6R8DZ01J
4	1	C10	47PF	CAP CER 47PF 50V 5% C0G 0402	CAL-CHIP	GMC04CG470J50NT-LF
5	1	C15	2.0PF	CAP CER 2.0PF 50V 0.25PF C0G 0402	MURATA	GRM1555C1H2R0CA01B
6	2	C8,C11,DNP	10PF	CAP CER 10PF 50V 5% C0G 0402	AVX	04025A100JAT2A
7	2	L1,L3	5.6NH	IND AIR 5.6NH@100MHZ 300MA 0.3NH 0402	muRata	LQG15HN5N6S02D
8	2	L2,L4	0.0068UH	IND -- 0.0068UH@100MHZ 300MA 5% 0402	MURATA	LQG15HS6N8J02D
9	1	L7	0.0047UH	IND -- 0.0047UH@100MHZ 300MA +/-0.3NF 0402	MURATA	LQG15HS4N7S02D
10	1	L5	33nH	IND -- 0.033UH@100MHZ 200MA 5% 0402	TOKO INC.	LL1005-FHL33NJ
11	1	L9	2.0nH	IND -- 0.002UH@100MHZ 300MA 0.0003UH 0402	MURATA	LQG15HS2N0S02
12	1	C9	7.5 PF	CAP CER 7.5PF 50V +/-0.5pF C0G 0402	MURATA	GRM1555C1H7R5DA01D
13	2	C45,C46 (DNP)	10PF	CAP CER 10PF 50V 5% C0G 0402	AVX	04025A100JAT2A

Table 3-8. Bill of Materials (MRB-KW014532CN)

Item	Qty	Reference	Value	Description	Mfg. Name	Mfg. Part Number
1	2	C2,C4	8.2PF	CAP CER 8.2PF 50V 0.5PF C0G 0402	AVX	04025A8R2CAT2A
2	4	C3,C9,C12,C15	15PF	CAP CER 15PF 50V 1% C0G 0402	VENKEL COMPANY	C0402C0G500-150FNE
3	2	C8,C11	2.4PF	CAP TF 2.4PF 50V 0.25PF -- 0402	MURATA	GJM1555C1H2R4BB01
4	2	C10,C13	10PF	CAP CER 10PF 50V 5% C0G 0402	AVX	04025A100JAT2A
5	3	L1,L3, L4	12 NH	IND -- 0.012UH@100MHZ 300MA 5% 0402	MURATA	LQW15AN12NJ00D
6	1	L5	22NH	IND -- 22NH@100MHZ 310MA 5% 0402	MURATA	LQW15AN22NG00D
7	1	L2	10 NH	IND -- 0.010UH@100MHZ 300MA 5% 0402	MURATA	LQW15AN10NJ00D
8	2	L7,L9	0 ohms	RES MF ZERO OHM 1/10W 0402	PANASONIC	ERJ-2GE0R00X
9	2	C45, C46 (DNP)	10PF	CAP CER 10PF 50V 5% C0G 0402	AVX	04025A100JAT2A

Table 3-9. Bill of Materials (MRB-KW013032CN)

Item	Qty	Reference	Value	Description	Mfg. Name	Mfg. Part Number
1	2	C2,C4	12PF	CAP CER 12PF 50V 5% C0G 0402	MURATA	GRM1555C1H120JZ01D
2	1	C9	15PF	CAP CER 15PF 50V 5% C0G 0402	VENKEL COMPANY	C0402C0G250-150JNP
3	4	C8,C11, C45,C46 DNP	10PF	CAP CER 10PF 50V 5% C0G 0402	AVX	04025A100JAT2A
4	4	C15, C10, C3,C12	22pF	CAP CER 22pF 50V 5% C0G AEC-Q200 0402	MURATA	GCM1555C1H220JA16
5	1	C13	10PF	CAP CER 10PF 50V 5% C0G 0402	AVX	04025A100JAT2A
6	2	L1,L5	33NH	IND -- 0.033UH@100MHZ 200MA 5% 0402	MURATA	LQG15HS33NJ02D
7	2	L3, L4	22 NH	IND -- 22NH@100MHZ 310MA 2% 0402	MURATA	LQW15AN22NG00D
8	1	L2	18 NH	IND AIR 18NH@100MHZ 370MA 3% 0402	MURATA	LQW15AN18NH00D
9	1	L9	1.5NH	IND -- 1.5NH@500MHZ 280MA 7% 0402	MURATA	LQP15MN1N5B02D
10	1	L7	4.7NH	IND -- 4.7NH@100MHZ 300MA +/-0.3nH 0402	MURATA	LQG15HN4N7S02D



## Chapter 4

# PCB Manufacturing Specifications

This chapter provides the specifications used to manufacture the MKW01 Development hardware printed circuit board (PCB) described in this manual. This information is provided as an example or starting point.

The MKW01 Development hardware PCBs must comply with the following:

- The PCB must comply with Perfag10/3C (<http://www.perfag.dk/Uk/ukindex.htm>)
- The PCB manufacturer's logo is required
- The PCB production week and year code is required
  - The manufacturer's logo and week/year code must be stamped on the back of the PCB solder mask
  - The PCB manufacturer can not insert text on the PCB either in copper or in silkscreen without written permission from Freescale Semiconductor, Inc.
- The required Underwriter's Laboratory (UL) Flammability Rating
  - The level is 94V-0 (<http://www.ul.com/plastics/flame.html>)
  - The UL information must be stamped on the back of the PCB solder mask

### NOTE

- A complete set of design files is available for the KW01 Development hardware at the Freescale web site (<http://www.freescale.com/802154>) under reference designs. It is recommended that this design or one of a number of other reference designs be used as a starting point for a custom application.
- The *Freescale IEEE 802.15.4 / ZigBee Package and Hardware Layout Considerations Reference Manual*, (ZHDCRM) is also available at the same web site to provide additional design guidance.

## 4.1 Single PCB Construction

This section describes individual PCB construction details.

- The MKW01 PCB is a four-layer, multi layer designs
- The PCBs contains no blind, buried, or micro vias
- PCB data:
  - MKW01 Size: Approximately 66 x 51mm (2.60 x 2.01 inches)
  - MKW01 Final thickness (Cu/Cu): 0.34 mm (0.8 inches) +/- 10% (excluding solder mask)

The following table defines some of the layers of the completed PCB. The artwork identification refers to the name of the layer in commonly used terms.

Table 4-1. MKW01 Layer by Layer Overview

Layer	Artwork Identification	File Name
1	Silkscreen Top	SILK_TOP.art
2	Top Layer Metal	TOP.art
3	Ground Layer	GND.art
4	Power Layer	PWR.art
5	Bottom Layer Metal	BOTTOM.art
6	Silkscreen Bottom	SILK_BOTTOM.art

**NOTE**

The MKW01 contains sub 1 GHz RF circuitry. As a result, RF component placement, line geometries and layout, and spacing to the ground plane are critical parameters. As a result, BOARD STACKUP GEOMETRY IS CRITICAL. Dielectric and copper thicknesses and spacing must not be changed; follow the stackup (see [Figure 4-1](#)) information is provided with the reference design.

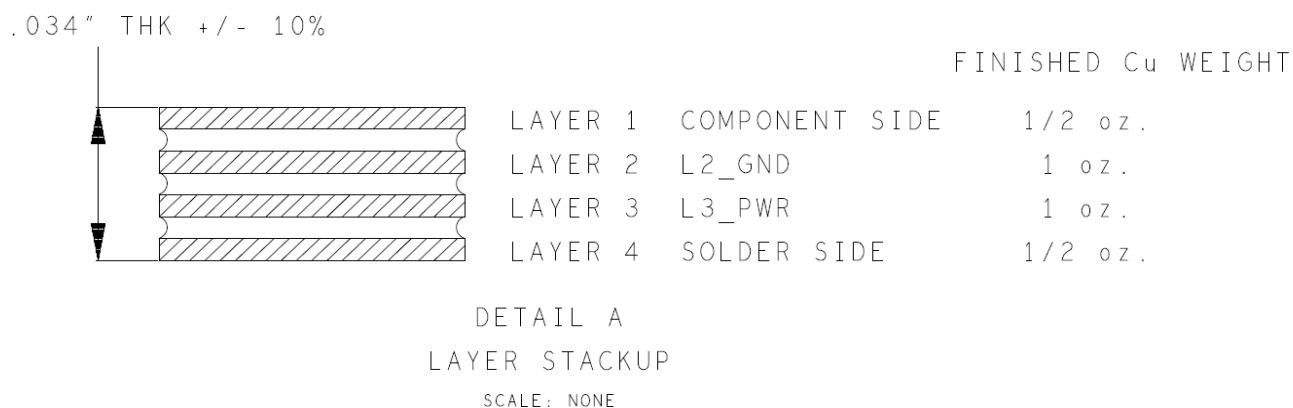


Figure 4-1. MKW01 PCB Stackup Cross-Section (Four Layer)

- Solder mask is required
- Silk screen is required

## 4.2 Panelization

The panel size can be negotiated depending on production volume.

## 4.3 Materials

The PCB composite materials must meet the following requirements:

- Laminate - The base laminate material (laminate) must be FR4. If the laminate material were changed the RF electrical characteristics may change and degrade RF performance.

- Copper Foil -
  - Top and Bottom copper layers must be 1 oz. copper
  - Interior layers must be 1/2 oz. copper
- Plating - All pad plating must be Hot Air Levelling (HAL)

## 4.4 Solder Mask

The solder mask must meet the following requirements:

- Solder mask type: Liquid Film Electra EMP110 or equivalent
- Solder mask thickness: 10 – 30  $\mu\text{m}$

## 4.5 Silk Screen

The silk screen must meet the following requirements:

- Silkscreen color: White
- Silkscreen must be applied after application of solder mask if solder mask is required
- The silkscreen ink must not extend into any plated-thru-holes
- The silk screen must be clipped back to the line of resistance

## 4.6 Electrical PCB Testing

- All PCBs must be 100 percent tested for opens and shorts
- Impedance Measurement - An impedance measurement report is not mandatory

## 4.7 Packaging

Packaging for the PCBs must be the following requirements:

- Finished PCBs must remain in panel
- Finished PCBs must be packed in plastic bags that do not contain silicones or sulphur materials. These materials can degrade solderability.

## 4.8 Hole Specification/Tool Table

See the `ncdrill-1-4.tap` file included with the Gerber files and the `FAB-27792.pdf` file.

## 4.9 File Description

Files included with the download include Design, Gerber and PDF files.

Gerber files are RS-374x format. Not all files included with the Gerber files are for PCB manufacturing.

PDF files included are:

- FAB-27792.pdf — Board fabrication drawing
- GRB-27792.zip — Metal layers, solder mask, solder paste and silk screen
- SPF-27792.pdf — Schematic

Design files are in Allegro format with OrCAD schematic capture.