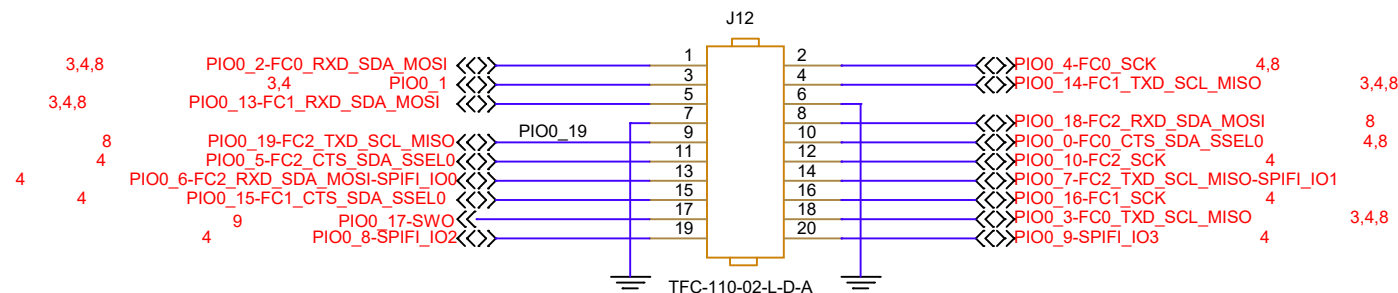
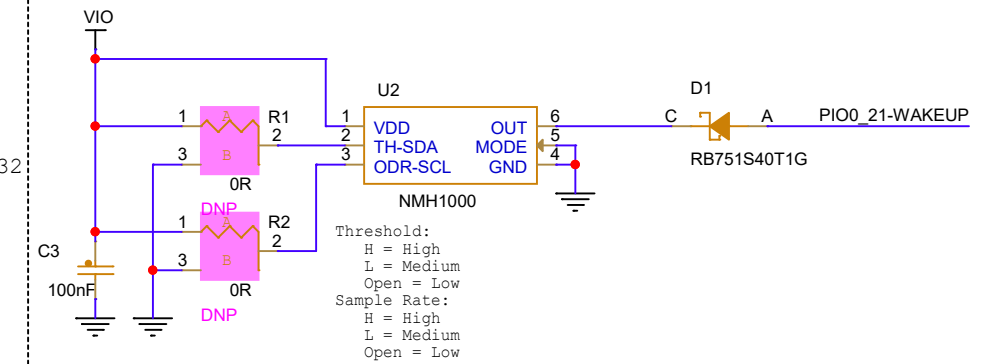


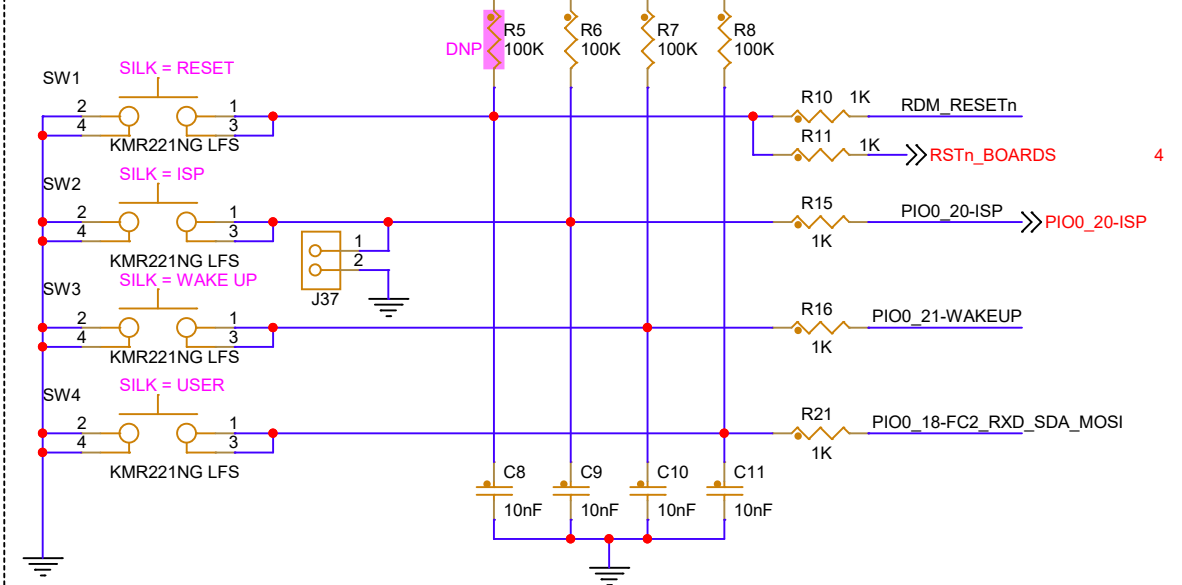
RDM Connectors



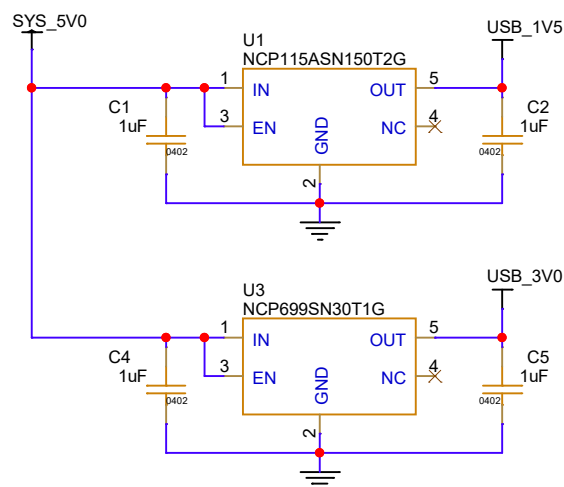
Magnetic Switch



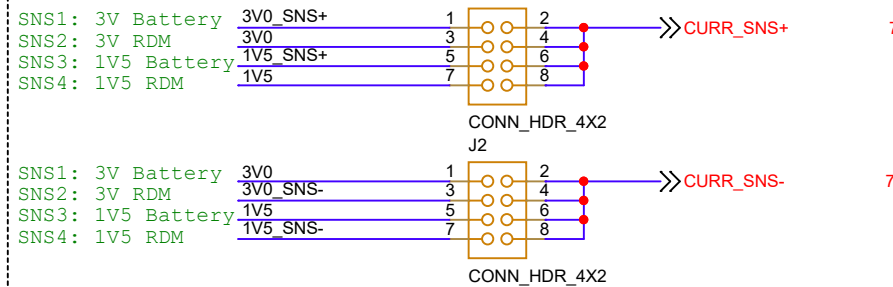
User Keys



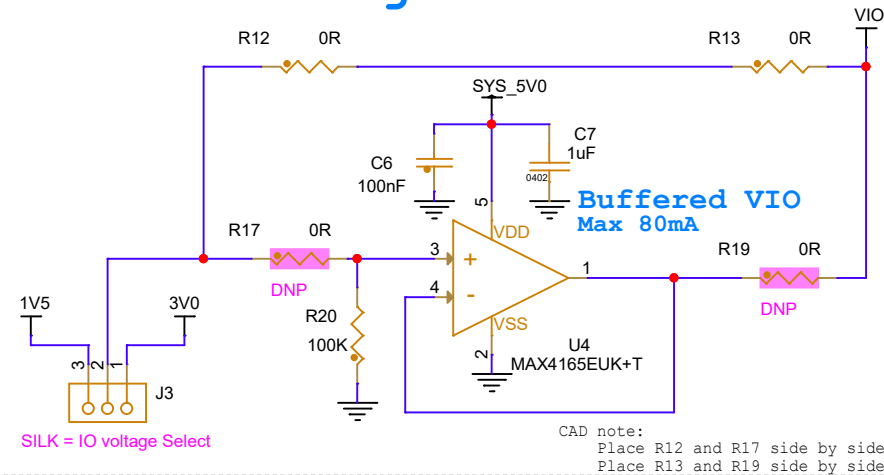
LDOs powered by USB



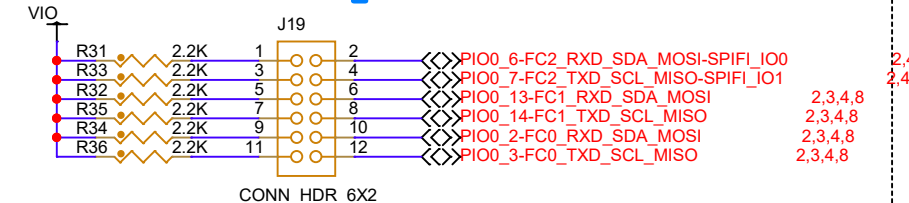
Current measurement selection



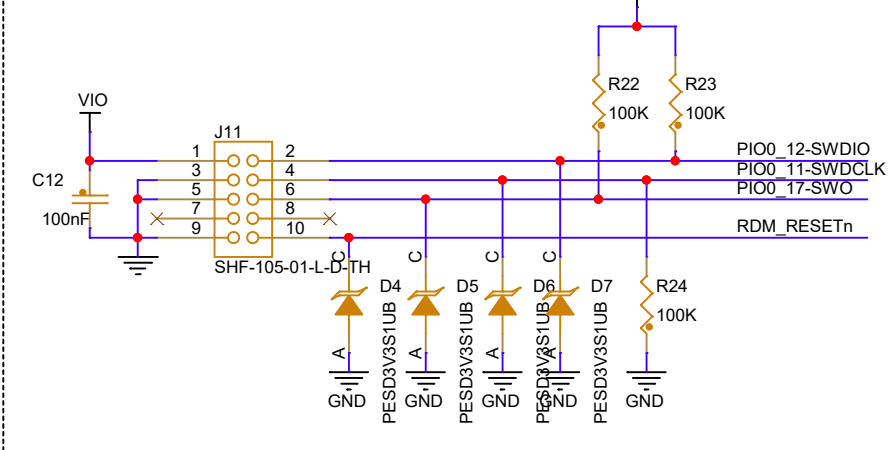
VIO Voltage Select



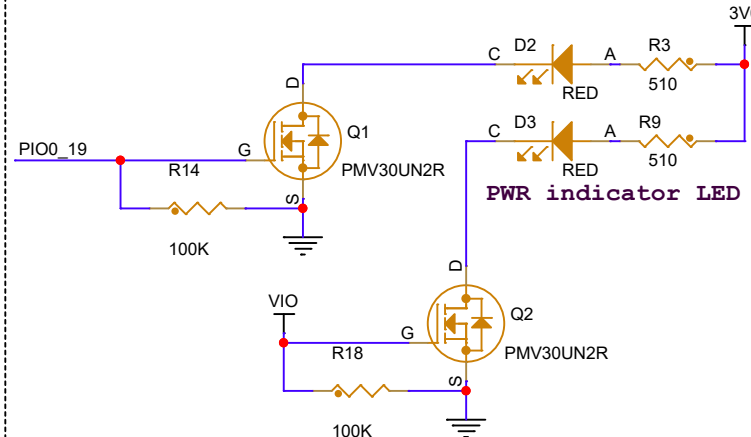
I2C Pull Up resistors



MCXW23x SWD



USER LEDs



Classification: Company Internal/Proprietary

Drawing Title:

MCXW23-EVK-BB

Page Title:

RDM interface

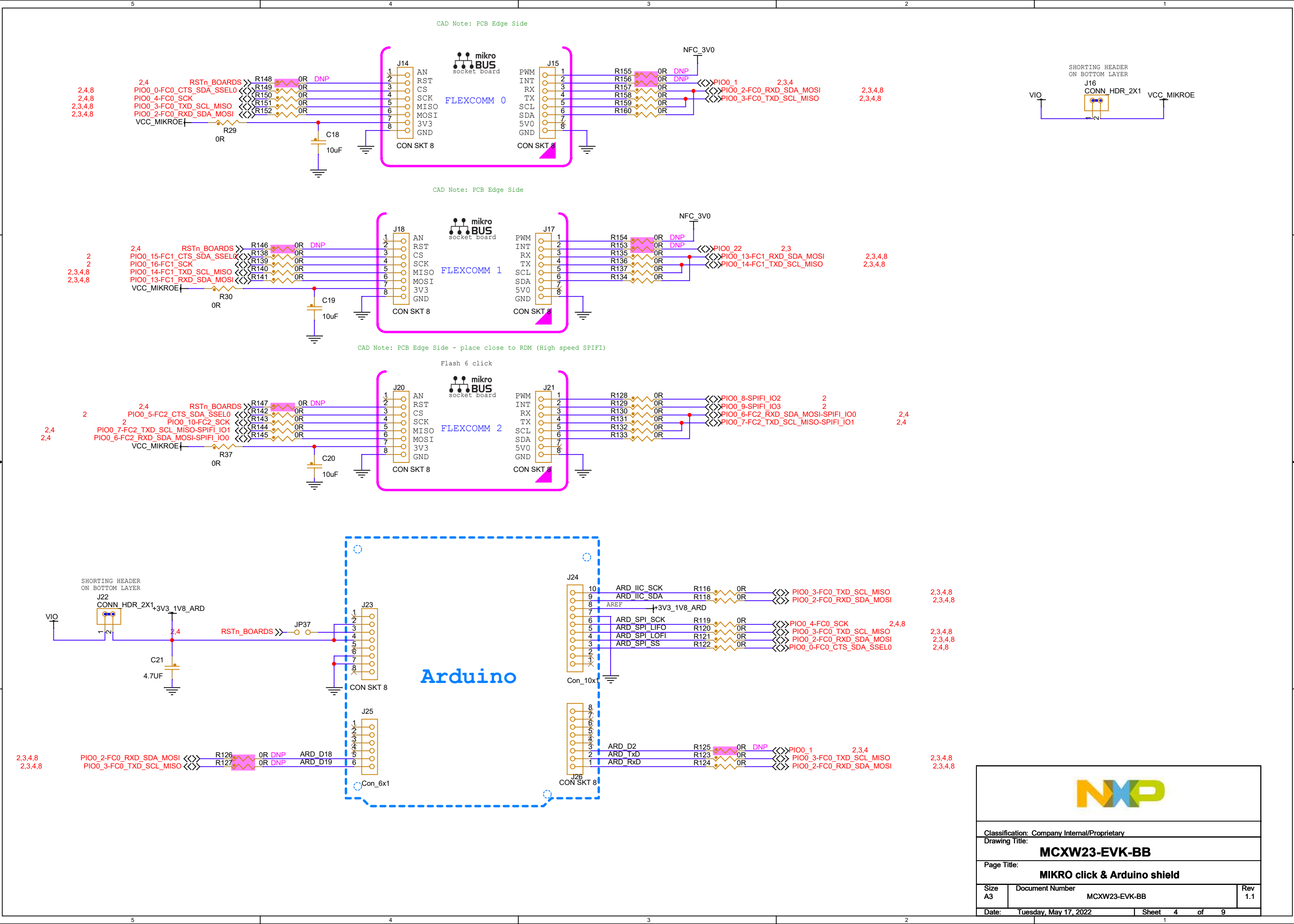
Size
A3

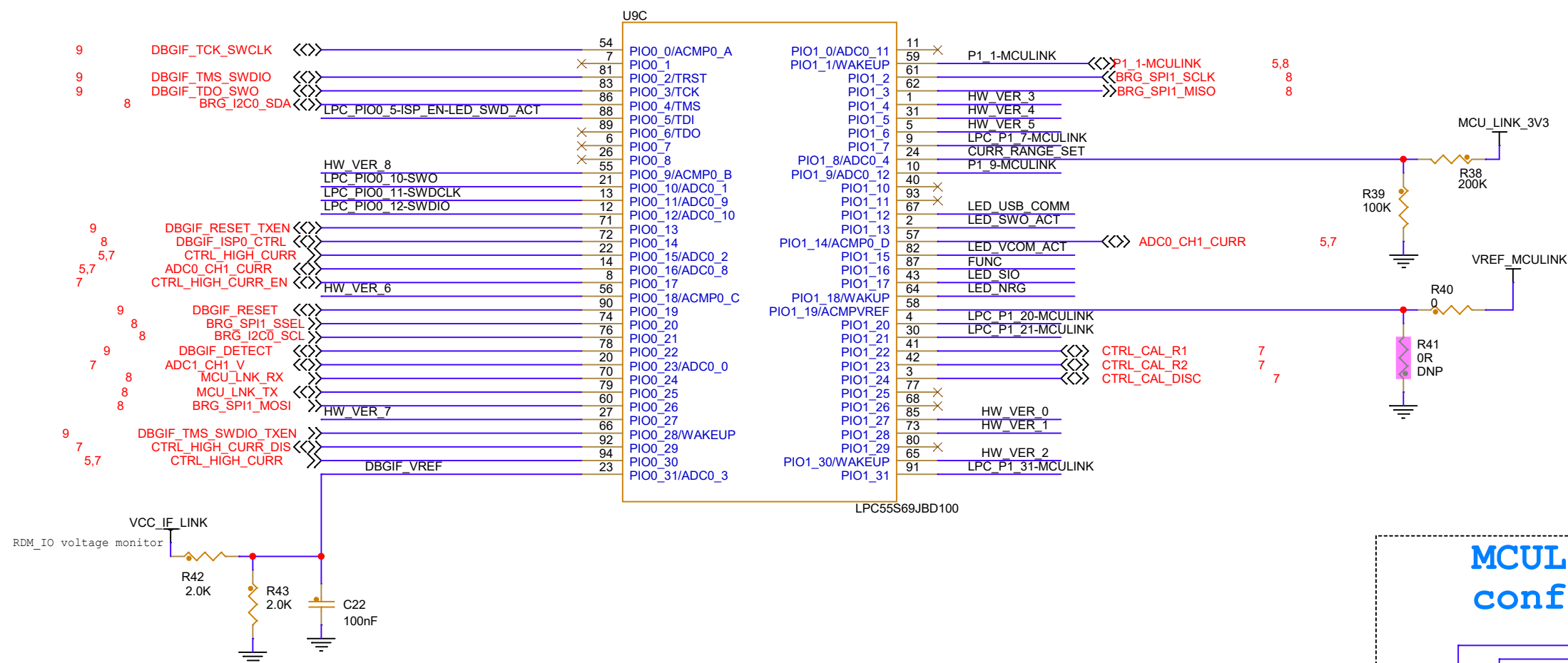
Document Number
MCXW23-EVK-BB

Rev
1.1

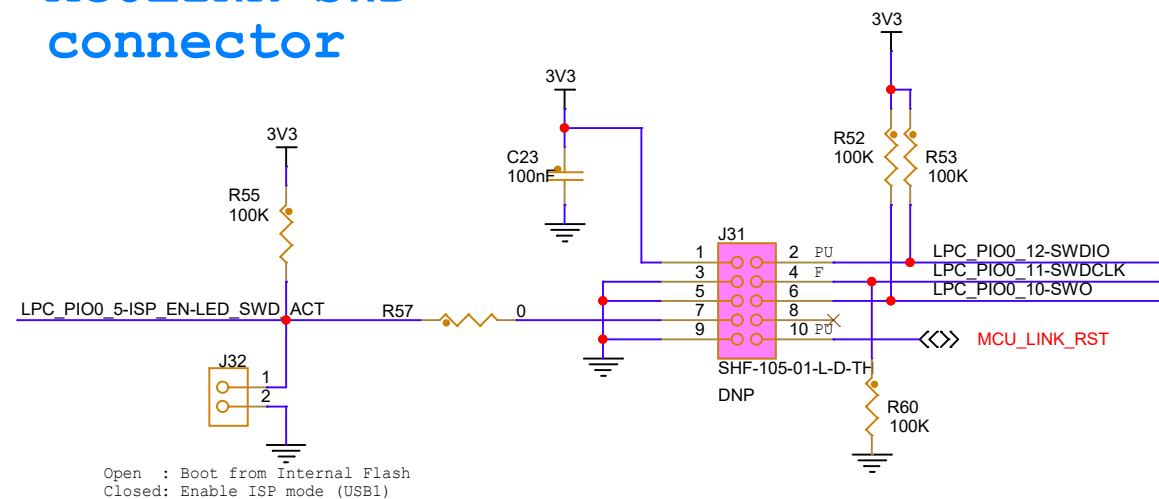
Date: Tuesday, February 18, 2025

Sheet 2 of 9

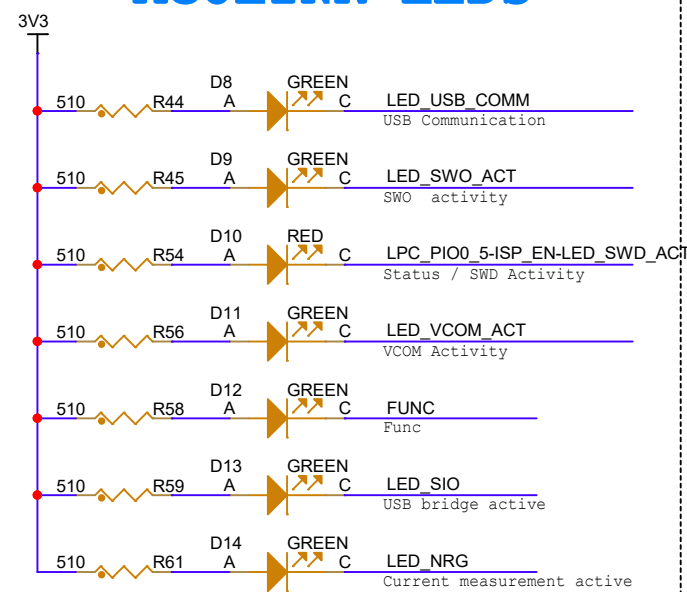




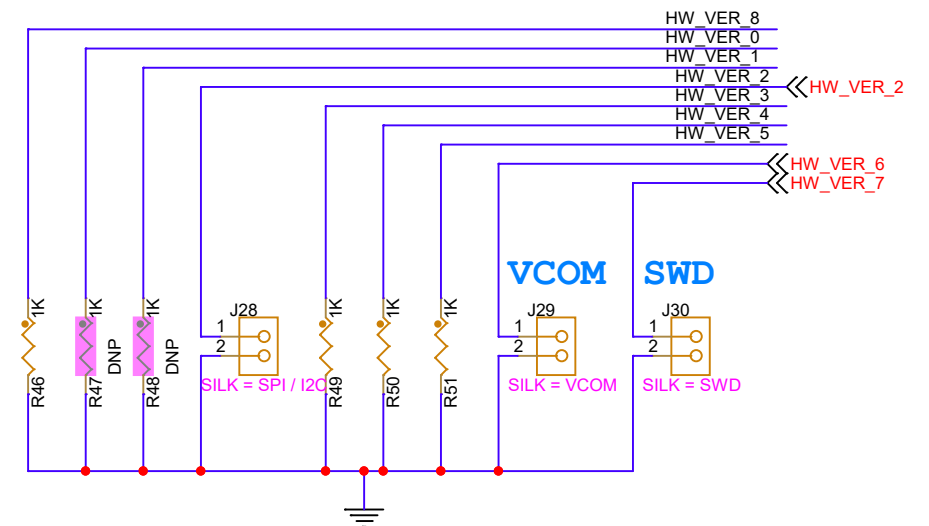
MCULINK SWD connector



MCULINK LEDs

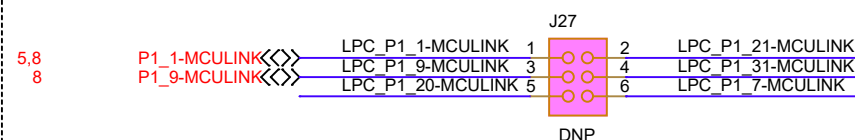


MCULINK features configuration



HW_VER0	USB Power negotiation
HW_VER1	Reserved
HW_VER2	USB SPI/I2C (GPIO) disable
HW_VER3	OB/Pro selection
HW_VER4	Board ID code select
HW_VER5	Power measurement capability
HW_VER6	VCOM enable/disable
HW_VER7	SWD enable/disable

MCULink GPIO



Classification: Company Internal/Proprietary

Classification:
Drawing Title:

MCXW23-EVK-BB

Page Title:

MCULink IO

Size	A3
------	----

Document Number	MCXW23-EVK-BB
-----------------	---------------

Rev	
1.1	

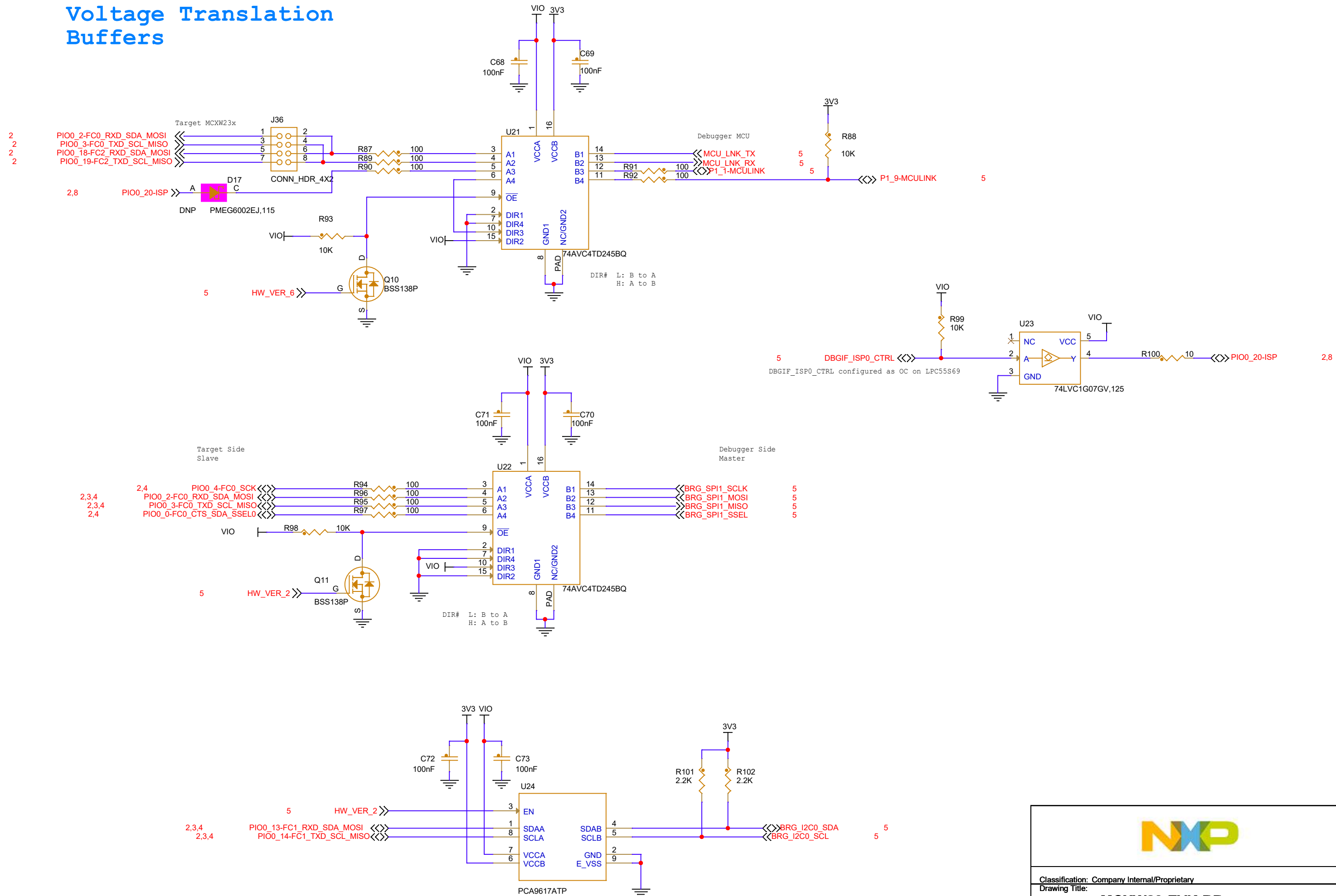
Date: Tuesday, May 17, 2022

Sheet 5 of 9



Rev	1.1
-----	-----

Voltage Translation Buffers



Classification: Company Internal/Proprietary

Drawing Title:

MCXW23-EVK-BB

Page Title:

MCULink ISP

Size	A3
------	----

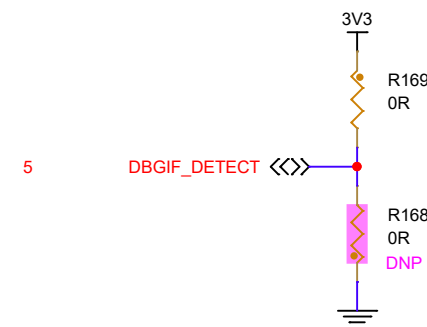
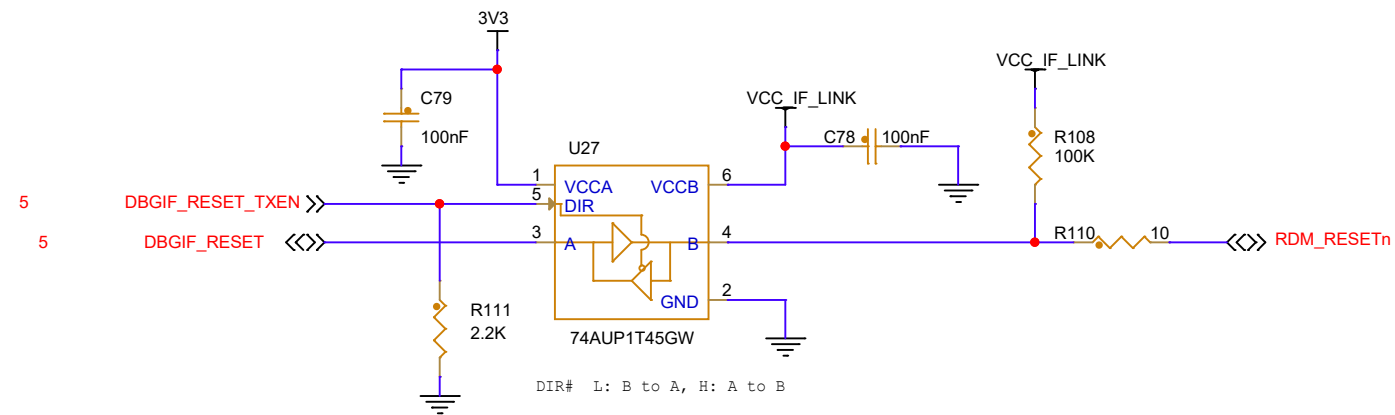
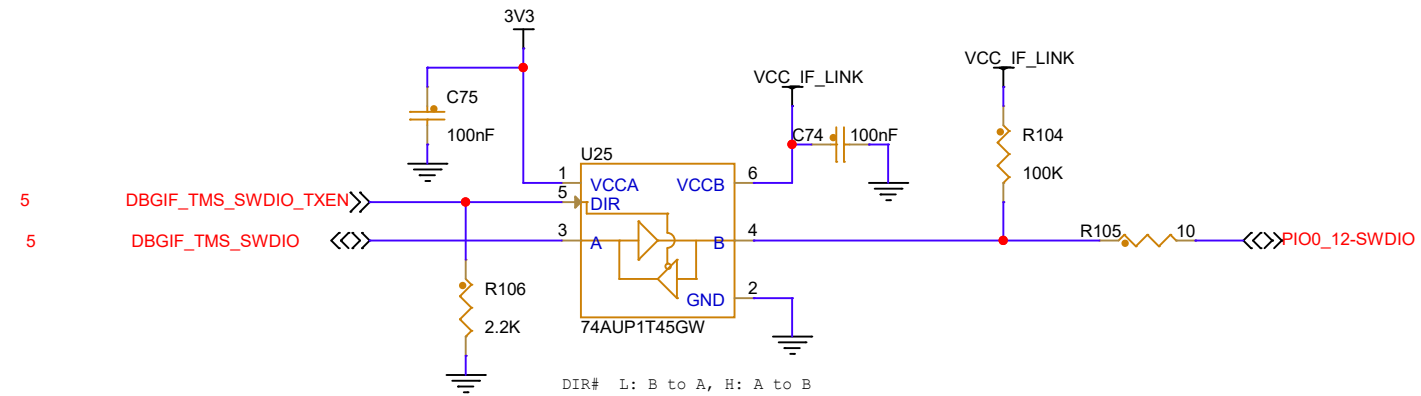
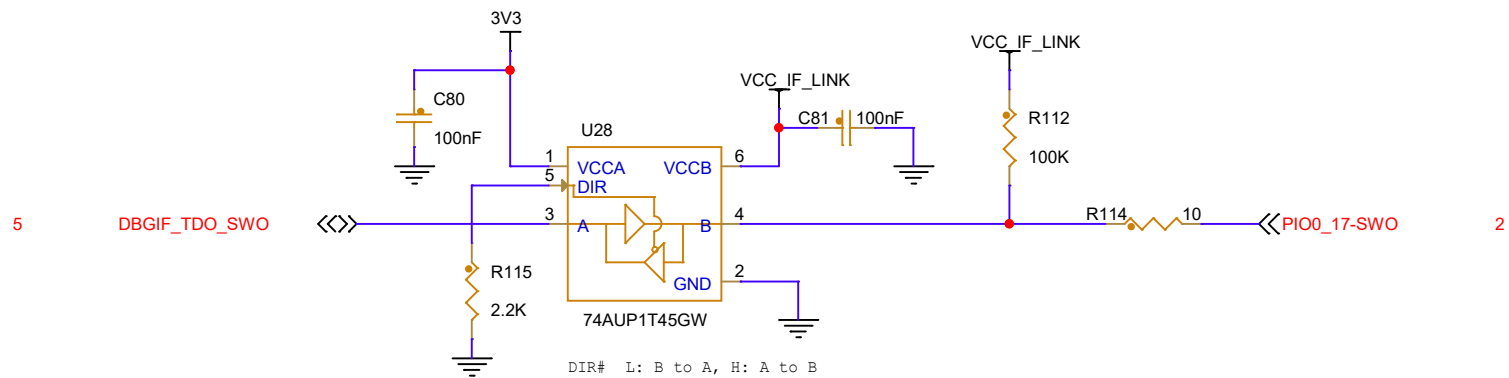
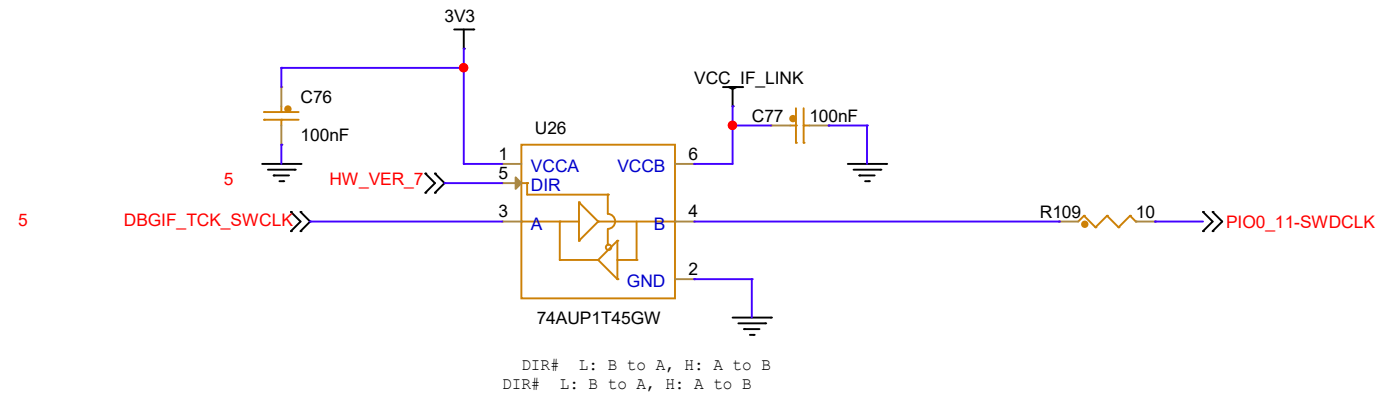
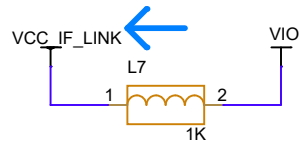
Document Number

MCXW23-EVK-BB

Rev
1.1

Date: Tuesday, February 18, 2025

Sheet	8	of	9
-------	---	----	---



Classification: Company Internal/Proprietary

Drawing Title:

MCXW23-EVK-BB

Page Title:

MCULink SWD

Size	Document Number	Rev
A3	MCXW23-EVK-BB	1.1

Date:	Tuesday, May 17, 2022	Sheet	9	of	9
-------	-----------------------	-------	---	----	---