

CMM-5234

Application Module for Freescale MCF5234 MCU
Hardware User Manual

M5234BCC EVB

M5234 Business Card Controller

CONTENTS

CAUTIONARY NOTES3

TERMINOLOGY3

FEATURES4

GETTING STARTED5

 SOFTWARE DEVELOPMENT5

 REFERENCE DOCUMENTATION5

 CMM-5234 STARTUP6

CMM-5234 HARDWARE CONFIGURATION AND OPTIONS6

 POWER SUPPLY7

 RESET7

 INDICATORS7

 ABORT SWITCH7

 SYSTEM CLOCK8

 MEMORY8

 COMMUNICATION PERIPHERALS8

 OPTION JUMPERS8

CMM-5234 PORTS AND CONNECTORS10

 PWR - POWER JACK10

 COM PORT10

 CAN PORT10

 J1 ETHERNET PORT11

 BDM_PORT11

 MCU_PORT12

 BUS_PORT12

 ETPU_PORT13

TROUBLESHOOTING14

DBUG MONITOR OPERATION15

 DBUG COMMUNICATION:15

 DBUG SYSTEM INITIALIZATION15

Interrupt Service Support15

 DBUG MEMORY MAP16

 DBUG COMMANDS17

dBUG Command Table17

 DBUG ETHERNET SUPPORT18

Configuring dBUG Network Parameters19

APPENDIX 1: DBUG COMMAND SET20

 ASM - ASSEMBLER20

 BC - BLOCK COMPARE21

 BF - BLOCK FILL21

 BM - BLOCK MOVE22

 BR - BREAKPOINTS22

 BS - BLOCK SEARCH23

 DC - DATA CONVERSION24

 DI - DISASSEMBLE24

 DL - DOWNLOAD CONSOLE25

 DLDBUG – DOWNLOAD DBUG (UPDATE)26

 DN - DOWNLOAD NETWORK26

 FL – FLASH LOAD OR ERASE27

 GO – EXECUTE USER CODE28

 GT - EXECUTE TO ADDRESS28

IKD - INTERNAL REGISTER DISPLAY	29
IRM - INTERNAL REGISTER MODIFY	29
HELP - HELP	30
LR - LOOP READ	30
LW - LOOP WRITE	30
MD - MEMORY DISPLAY	31
MM - MEMORY MODIFY	31
MMAP - MEMORY MAP DISPLAY	32
RD - REGISTER DISPLAY	33
RM - REGISTER MODIFY	33
RESET - RESET THE BOARD AND DBUG	34
SET - SET CONFIGURATIONS	34
SHOW - SHOW CONFIGURATIONS	35
STEP - STEP OVER	35
SYMBOL - SYMBOL NAME MANAGEMENT	36
TRACE - TRACE INTO	37
UP - UPLOAD NETWORK	37
VERSION - DISPLAY DBUG VERSION	37
TRAP #15 FUNCTIONS	38
<i>OUT_CHAR</i>	38
<i>IN_CHAR</i>	39
<i>CHAR_PRESENT</i>	39
<i>EXIT_TO_dBUG</i>	40

Cautionary Notes

- 1) Electrostatic Discharge (ESD) prevention measures should be applied whenever handling this product. ESD damage is not a warranty repair item.
- 2) Axiom Manufacturing reserves the right to make changes without further notice to any products to improve reliability, function or design. Axiom Manufacturing does not assume any liability arising out of the application or use of any product or circuit described herein; neither does it convey any license under patent rights or the rights of others.
- 3) EMC Information on the CMM-5234 board:
 - a) This product has been tested and meets with requirements of CE and the FCC as a **CLASS A** product when applied with appropriate power supply and cables.
 - b) This product is designed and intended for use as a development platform for hardware or software in an educational / professional laboratory or as a component in a larger system.
 - c) In a domestic environment this product may cause radio interference in which case the user may be required to take adequate prevention measures.
 - d) Attaching additional wiring to this product or modifying the products operation from the factory default as shipped may effect its performance and also cause interference with other apparatus in the immediate vicinity. If such interference is detected, suitable mitigating measures should be taken.

Terminology

This development board applies option selection jumpers. Terminology for application of the option jumpers is as follows:

Jumper on, in, or installed = jumper is a plastic shunt that fits across 2 pins and the shunt is installed so that the 2 pins are connected with the shunt.

Jumper off, out, or idle = jumper or shunt is installed so that only 1 pin holds the shunt, no 2 pins are connected, or jumper is removed. It is recommended that the jumpers be placed idle by installing on 1 pin so they will not be lost.

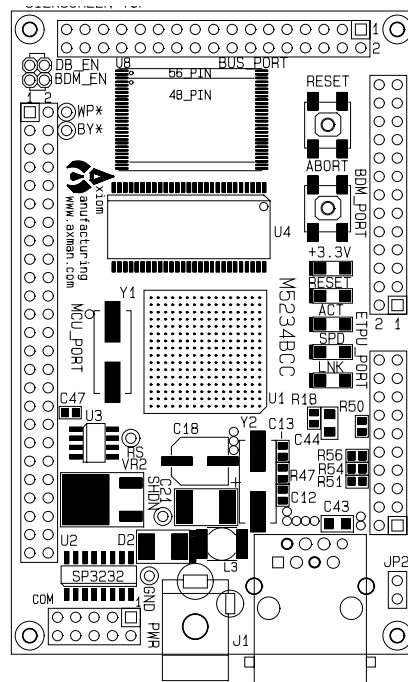
This development board applies CT (cut trace) or option selections that require a soldering tool to install or remove. This type connection places an equivalent Jumper Installed type option. Applying the connection can be performed by installing a 0 ohm resistor component or small wire between the option pads. See the Options section for more details.

FEATURES

The M5234BCC / CMM-5234 is a low cost evaluation module in Business Card Controller (BCC) format for the Freescale MCF5234 Coldfire® microcontroller. A key feature is the National Semiconductor DP83640T PHYTER® Ethernet PHY with embedded IEEE 1508 precision time protocol. Development kit application is quick and easy with the included Axiom CMM-5234 module / application board, DB9 serial cable, Ethernet cable, 3rd party Demo Software, Freescale dBUG monitor, and GNU compiler and software tools. The BDM port is compatible with standard Coldfire® BDM / JTAG Low voltage development cables. The installed dBUG monitor software allows simple application debugging and development.

Features:

- ◆ MCF5234 CPU
 - * 64K Byte Ram (on chip)
 - * 8K Byte Cache Ram (on chip)
 - * 16 Channel ETPU module
 - * DMA Controller w/ Timers
 - * Interrupt Controller
 - * QSPI, IIC, and 2x CAN Serial Ports
 - * 3 x SCI UART Ports with DMA capability
 - * Edge / Interrupt Port
 - * BDM / JTAG Port
 - * 3.3V / 1.5V operation
 - * Up to 150Mhz operation
- ◆ 2M Byte Flash (16 bit, external)
- ◆ 16M Bytes SDRAM (32 bit, external)
- ◆ 25Mhz reference crystal, up to 150Mhz operation
- ◆ 10/100TX Ethernet Port w/ NSC DP83640T PHY, IEEE 1508 capability, RJ45 Connector, 3 Status Indicators, Auto connection detection.
- ◆ MCU Port, 50 pin GPIO port w/ 1 x 1Mb CAN I/O
- ◆ ETPU Port, 20 pins, 16 channels w/ +V supply
- ◆ BUS Port, 34 pins, 64K Address, 8 bit Data Bus, 3 selects
- ◆ BDM / JTAG Port, 26 Pins, development port.
- ◆ COM Port (UART0) w/ RS232 DB9-S Ribbon Connector
- ◆ CAN port w/ 1Mbaud transceiver, on MCU Port
- ◆ RESET switch and indicator
- ◆ ABORT (IRQ7) switch
- ◆ Regulated +3.3V and +1.5V power supply w/ indicator
- ◆ BCC kit supplied with DB9 Serial Cable, Cat 5E Ethernet cable, BDM Development Cable, Utility / Support CD, Manuals, and Universal Wall Adapter power supply.



M5234BCC / CMM-5234

Specifications:

Board Size 3.5" x 2.2 inches w/ 4 x #2 mounting holes
 Power Input: +5 - +30VDC, 12VDC typical
 Current Consumption: 120ma @ 12VDC input typical (100Mhz clock)

The CMM-5234 is provided, operating the Freescale dBUG monitor firmware. The monitor allows serial interface to a PC host for file loading and terminal command line operations. Ethernet operation supports TFTP file downloads into the development board. The support CD contains GNU Tool package, device data sheets, PC Terminal software, and user manuals. The kit is plug in and play out of the box with a wall adapter power supply. No additional hardware or software is required.

GETTING STARTED

The CMM-5234 single board computer is a fully assembled, fully functional development board for the Freescale MCF5234 microcontroller. Provided with wall plug power supply, Ethernet cable, and serial cable. Provided support software for this development board is for Windows 95/98/NT/2000/XP operating systems.

Development board users should also be familiar with the hardware and software operation of the target MCF5234 device, refer to the provided Freescale User Guide for the device and the Coldfire Reference Manual for details. The development board purpose is to assist the user in quickly developing an application with a known working environment, to provide an evaluation platform, or as a control module for an applied system. Users should be familiar with memory mapping, memory types, and embedded software design for the quickest successful application development.

Software Development

Application development maybe performed by applying the dBUG firmware monitor, or by applying a compatible Coldfire BDM / JTAG cable with supporting host software. The monitor provides an effective and low cost command line debug method.

Software development is best performed with a development tool connected to the BDM port. This provides real-time access to all hardware, peripherals and memory on the board. Development tool software also provides high-level (C/C++) source code debug environment.

The target development environment and procedure for best success is to place software to be tested into RAM memory. Execute software to be tested under dBUG monitor or development tool control, after software is tested and operational, port and program application into FLASH memory to execute new application when power is applied.

Reference Documentation

Reference documents are provided on the support CD in Acrobat Reader® format.

CMM-5234_man_B.pdf:	This user manual.
MCF5235UM.pdf:	MCF523x Device User Manual
MCF5235EC.pdf:	MCF523x Device Electrical Characteristics
CFPRM.pdf:	Coldfire Programmers Reference Manual with instruction set
CMM-5234_SCH_AB.pdf:	CMM5234 board schematics
DP83640T.pdf :	Ethernet PHY device data sheet.
ETPU Reference Manual	

CMM-5234 Startup

Follow these steps to connect and power on the board for the default dBUG monitor operation.

- 1) Carefully unpack the CMM-5234 and observe ESD preventive measures while handling the CMM-5234 development board.
- 2) Load the ColdFire support CD into the PC and install the AxIDE terminal software from the utilities directory, OR configure HyperTerminal for a direct connection to the PC COM port to be applied for serial communication with the CMM-5234 board. Set the baud rate to 19.2K baud, 8 data bits, 1 stop bit, and no parity. Software XON / XOFF flow control should be enabled for flash memory support operations. Use the AxIDE '√' tool bar button to configure the COM port on the PC.
- 3) Connect the CMM-5234 board COM1 serial port connector to the host PC COM port with the provided 9 pin serial cable.
- 4) Apply power to the development board by installing the wall plug power supply between a wall outlet and the PWR Jack on the board. The board voltage indicators should turn on at this time.
- 5) Observe the AxIDE or HyperTerminal window display for the dBUG monitor prompt. prompt should be similar to the following:

```
Hard Reset  
DRAM Size: 16M
```

```
Copyright 1995-2003 Freescale, Inc. All Rights Reserved.  
ColdFire MCF5235 BCC Firmware v2e.1a.xx (Build XXX on XXX XX 20XXxx:xx:xx)
```

```
Enter 'help' for help.
```

```
dBUG>
```

- 6) The board is ready to use now. See the dBUG monitor manual for additional monitor information. If BDM / JTAG development port interfaced tools are to be applied, see the BDM PORT section of this manual for more details on installation.

CMM-5234 Hardware Configuration and Options

The CMM-5234 board provides a basic development or evaluation platform for the MCF5234 microcontroller. Operating mode of the MCF5234 is set at RESET for Master Mode, 32 bit bus, 16 bit boot device (flash), crystal oscillator. Following are descriptions of the main components and options provided on the board.

POWER SUPPLY

Input power is applied by external connection to the PWR power jack. The input supply is provided to the main 3.3V regulator VR1. VR2 provides 1.5V from the 3.3V supply for the MCF5234 core voltage. With +5 to +26VDC applied at the PWR jack, the +3.3V indicator should be ON.

RESET

External reset is provided by the RESET switch, LV1 low voltage detector, or user applied connection to the RESET* signal on the MCU PORT. If the main 3.3V supply is below operating level, the LV1 voltage detector will cause the MCF5234 to stay in the RESET condition. RESET switch provides for manual application of the MCF5234 RESET* signal. Both the RESET switch and LV1 provide a 150ms delay after release for the system to stabilize.

Application of RESET will cause the dBUG monitor or user application to initialize the MCF5234. Previous SDRAM memory content and operating state of the MCF5234 will be lost.

INDICATORS

Indication is provided for power supply status, CPU Reset status, and Ethernet status. The indications may be applied to determine proper operation of the development board. The Ethernet status indicators may be configured by PHY management interface to indicate other status, see the DP83640 data sheet for details.

Indicator Summary

INDICATOR	COLOR	OPERATION	DEFAULT CONDITION
+3.3V	Green	+3.3V power present	ON
RESET	RED	CPU is in RESET state	OFF
LNK	Green	Ethernet has Link	ON with Network Link
SPD	Green	Ethernet is operating 100 base	ON if 100 base network, OFF if 10 base network
ACT	Green	Ethernet is operating full duplex	ON if TX/RX active

ABORT Switch

The ABORT switch provides for manual application of the IRQ7 interrupt signal. This operation will allow the dBUG monitor to stop execution of a user program and maintain the CPU operating state for user examination. After application of the ABORT switch, dBUG will prompt the current program instruction pending. Display is similar to a breakpoint operation.

SYSTEM CLOCK

The reference oscillator is an 25MHz crystal. MCF5234 clock is generated by the internal PLL from the reference frequency for operation up to 150Mhz. CMM-5234 / BCC operation defaults to 100Mhz but higher speed operation is possible. User applications may change the clock setting under software control. Caution should be applied so that communication with the dBUG monitor is not lost due to clock frequency and serial baud rate change.

MEMORY

Memory is provided in the MCF5234 device and externally on the development board. The MCF5234 provides 64K bytes of SRAM memory internally. Board memory consists of 16M Bytes of SDRAM and 2M bytes of Flash memory standard (8M Byte possible). The debug monitor occupies the first or lower 256K bytes of the board Flash memory. User should refer to the dBUG memory map for default memory allocation and physical locations.

Memory Devices:

SDRAM = 2 x Micron MT48LC4M16A2 or same for 32 bit wide SDRAM bank of 16M bytes. SDRAM controller is dedicated to this interface. Optional upgrade to 32M byte bank is possible with 2 x MT48LC8M16 devices installed, contact factory for special configurations.

FLASH = 1 x AMD AM29LV160B or same for 16 bit wide flash bank of 2M bytes. CS0* chip select is dedicated to this memory bank. Optional flash bank sizes from 256K to 8M bytes maybe installed in the flash memory location on the board. The optional 48 or 56 pin package sizes occupy the flash location in a centered on device pads position. Contact factory for special configurations.

Note: The MCF5234 SDRAM controller must be configured prior to application of the memory space when BDM or JTAG tools are applied.

COMMUNICATION PERIPHERALS

The CMM-5234 provides 3 conditioned communication ports, 10/100T Ethernet, RS232 Serial COM, and CAN. User should refer to the respective manual chapter for details of operation and connection of each port.

OPTION JUMPERS

Option jumpers are provided for the most common user required selections.

Option summary

OPTION	OPERATION	DEFAULT Position
DB_EN	Enable the dBUG monitor in flash memory.	Installed
BDM_EN	Enable BDM mode on the development port.	Idle (must be installed to apply BDM cable)
JP2	Enable Ethernet PHY interrupt on IRQ6	Idle / Open

BDM_EN

The BDM_EN option must be installed to operate the PE Coldfire cable or any similar BDM type development cable. BDM_EN option change should be performed with board powered off.

INSTALLED = BDM_PORT is in BDM Mode (Development mode = BDM).

OPEN = BDM_PORT is in JTAG Mode (Development mode = JTAG).

DB_EN

Option allows dBUG firmware to remain resident in the external flash while a dedicated user application operates from RESET. Jumper operation will enable or disable the dBUG monitor portion of the flash memory. Opening this option jumper removes the dBUG firmware and lower half of the flash memory device from the MCF5234 memory map. This allows a user application to be started at RESET instead of the monitor for dedicated application operation. To recover the dBUG monitor the DB_EN option is installed and BCC board RESET.

Applications developed with BDM or JTAG tool support do not need the dBUG monitor to be resident. In this case the DB_EN option should remain installed so the user has access to all of the flash memory space.

Procedure to load user application for dedicated operation from RESET:

- 1) Compile and link application code to be located at the flash base address: 0xFFE00000.
- 2) With DB_EN option installed, apply the dBUG monitor command:

"FL erase FFF00000 100000" This will erase the top half of the flash memory.
- 3) Load the application program with the dBUG monitor command: "DL 100000" Then send the application program S record to the board with the terminal software upload operation. Make sure the XON / XOFF flow controls are enabled or errors may occur.
- 4) Remove or idle the DB_EN option jumper and apply RESET to launch the application. If the application program is functional, it will operate at this time.
- 5) to recover the dBUG monitor, install the DB_EN option on both pins and apply RESET. dBUG should prompt on the serial port.

JP2

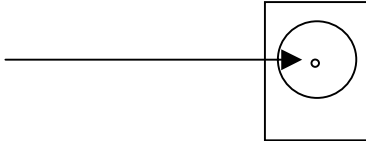
This option enables the U7 Ethernet PHY device interrupt on the MCF5234 IRQ6 interrupt. Note that software support is also required for this option.

CMM-5234 PORTS AND CONNECTORS

PWR - Power Jack

PWR provides the default power input to the board. The power jack accepts a standard 2.0 ~ 2.1mm center barrel plug connector (positive voltage center) to provide the +VIN supply of +5 to +26 VDC (+9VDC typical).

+Volts, 2mm center



COM Port

The COM port provides a 10 pin ribbon connection for a standard socket type 9 pin serial connector. The port provides RS232 type interface to the MCF5234 UART0 peripheral. The COM1 port is applied by the dBUG monitor at 19.2K baud default. Following is the connection reference.

COM1

DB9-1	1	2	DB9-6	The COM port is a DB9 socket connector with RS232 signal levels. CTS / RTS are enabled by options RTS and CTS to MCF5234 signals RTS0 and CTS0 respectfully for UART0 hardware flow control. 1,4,6 connected for status null to host	
DB9-2	TXD	3	4		CTS DB9-7
DB9-3	RXD	5	6		RTS DB9-8
DB9-4	7	8	DB9-9		
DB9-5	GND	9	10		N/C

The 1, 4, 6 and 9 pins provide RS232 status signals

RTS and CTS OPTION PADS –

Apply 0805 SMT size 0 ohm resistors or wire ties across the option pads to enable MCF5234 RTS0* (output and CTS0* input signals for hardware flow control operation on the COM1 port. These signals should also be enabled in UART0 by the user application.

CAN Port

The CAN port provides the physical interface layer for the MCF5234 FlexCAN Controller Area Network version 2.0B peripheral. The FlexCAN channel 0 transmit and receive signals provided on the UART1 RXD1 and TXD1 signal pins from the MCF5234 are connected to a 3.3V CAN transceiver capable of 1M baud communication (SN65HVD230). Transceiver differential CAN network signals CAN_HI and CAN_LO are provided a 62 ohm termination and applied to the MCU PORT connector pins 49 and 50 respectfully.

The CAN transceiver has CAN signal drive control via the **RS** test pad on the development board. The RS signal is provided a 1K Ohm pull-down resistor for the maximum signal rate setting. User may refer to the SN65HVD230 data sheet and apply additional signal control at the RS test pad. The port connector accepts standard .1 inch space .025 square pin socket connectors.

CANTX0 (UTXD1) and CANRX0 (URXD1) signals can be isolated by CT1 and CT2 cut-away options for user application applied via the MCU Port.

J1 ETHERNET Port

J1 provides the Ethernet physical interface connection. Port configuration applies a National Semiconductor DP83640T 10/100T physical layer transceiver (PHY) to the MCF5234 Fast Ethernet Controller (FEC/MAC). A complete IEEE802.3 interface with IEEE1588 Precision Time support is provided. Features of the port include Auto cable or connection configuration type detection, 3 status indicators, and an integrated transformer RJ45 connector.

The **JP2** interrupt option can be applied by the user for PHY status interrupt services via IRQ6 in the MCF5234. Refer to the DP83640 data sheet for register and operation details.

Ethernet Status Indicators

LNK	Green	Ethernet has Link	ON with Network connected
SPD	Green	Ethernet is operating 100 base	ON if 100 base network, OFF if 10 base network
ACT	Green	Ethernet has TX/RX activity	ON if TX/RX messages

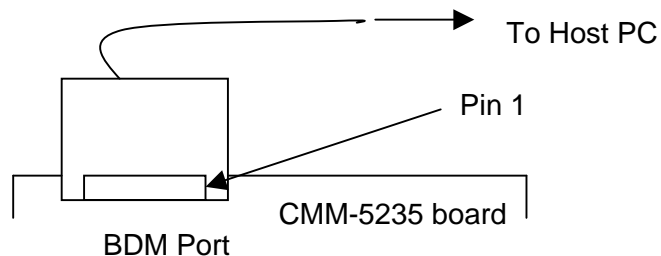
Note: Ethernet port must be operating for status indications.

Refer to the CMM5234_SCH_AB.pdf drawing for details on hardware connections to this port.

BDM_PORT

The BDM PORT provides a standard Coldfire BDM / JTAG development port. The **BDM_EN** option provides for the development port mode selection between BDM or JTAG.

Development Cable Installation



BDM /JTAG Port Connection

	1	2	BKPT*
GND	3	4	DSCLK
GND	5	6	TCLK
RESET*	7	8	DSI
+3.3V	9	10	DSO
GND	11	12	PST3
PST2	13	14	PST1
PST0	15	16	DDATA3
DDATA2	17	18	DDATA1
DDATA0	19	20	GND
	21	22	
GND	23	24	TCLK
+1.5V	25	26	TA*

MCU_PORT

The MCU PORT provides access to the MCF5234 I/O ports.

	SCL	1	2	SDA
	LTPU	3	4	CLKOUT
	RESET*	5	6	RSTO*
	TEA*	7	8	TIP*
	TSIZ0	9	10	TS*
	TSIZ1	11	12	CS7*
	CS6*	13	14	CS5*
	CS4*	15	16	CS3*
	CS2*	17	18	CS1*
	DTIN3	19	20	DTOUT3
	DTIN2	21	22	DTOUT2
	DTIN1	23	24	DTOUT1
	DTIN0	25	26	DTOUT0
	UTXD2/CANTX1	27	28	URXD2/CANRX1
	UCTS1	29	30	URTS1
	(Note 1) UTXD0	31	32	URXD0 (Note 1)
(Note 1)	CANRX0 / URXD1	33	34	CANTX0 / UTXD1 (Note 1)
	QSPICS1	35	36	QSPICS0
	QSPICK	37	38	QSPIDIN
	QSPIDOUT	39	40	IRQ7*
	IRQ6*	41	42	IRQ5*
	IRQ4*	43	44	IRQ3*
	IRQ2*	45	46	IRQ1*
	GND	47	48	+3.3V
	CAN_HI	49	50	CAN_LO

Note 1: These signals have peripheral connection on the CMM-5234 board.

BUS_PORT

The BUS PORT provides 64K Byte access space with 3 selects to peripherals. All signals on the BUS PORT have a peripheral connection on the CMM-5234 board. Application of the BUS

signals will require the addition of buffers on the external connections, ribbon cables should not be applied.

D24	1 2	D25
D26	3 4	D27
D28	5 6	D29
D30	7 8	D31
A0	9 10	A1
A2	11 12	A3
A4	13 14	A5
A6	15 16	A7
A8	17 18	A9
A10	19 20	A11
A12	21 22	A13
A14	23 24	A15
CS1*	25 26	CS2*
CS3*	27 28	OE*
BS3*	29 30	R/W*
TS*	31 32	TA*
+3.3V	33 34	GND

ETPU_PORT

The ETPU PORT provides access to the MCF5234 ETPU signals. TPU channels 0 – 15 are provided I/O access on the port.

TPUCH0	1 2	TPUCH1
TPUCH2	3 4	TPUCH3
TPUCH4	5 6	TPUCH5
TPUCH6	7 8	TPUCH7
TPUCH8	9 10	TPUCH9
TPUCH10	11 12	TPUCH11
TPUCH12	13 14	TPUCH13
TPUCH14	15 16	TPUCH15
TCRCLK	17 18	GND
+3.3V	19 20	+VIN

TROUBLESHOOTING

The CMM-5234 is fully tested and operational before shipping. If it fails to function properly, inspect the board for obvious physical damage first. Verify the communications setup as described under GETTING STARTED.

The most common problems are improperly configured options or communications parameters.

1. Verify default option settings and RESET the board.
2. Make sure that the RESET* line is not being held low or the RESET indicator is not on constantly.
3. Verify that your COM communications port is working by substituting a known good serial device or by doing a loop back diagnostic. If you applied a different baud rate with the dBUG SET command, make sure the terminal software is set correctly.
4. Verify the power source, +3.3V Indicator is ON? You should measure a minimum of 9 volts between the GND and +VIN (GND Test Point and ETPU Port pin 20) with the standard power supply provided.
5. If no power indications or voltage is found, verify the wall plug connections to AC outlet and the PWR jack power connector.
6. Disconnect all external connections to the board except for COM to the PC and the wall plug and check operation again.
7. If the BDM cable with development tools has been applied, the board flash may be corrupt or contain unknown firmware. Apply the CF Flasher software tool and BDM cable to reload the dBUG monitor and restore the board to a known state.
8. Contact support@axman.com by email for further assistance. Provide board name and describe problem.

dBUG MONITOR OPERATION

dBUG is a firmware resident development environment operated by the MCF5234 as a primary control program. The monitor provides serial and Ethernet communication for loading and controlling the execution of software under test. User should note that the monitor occupies the first or lower address ~256K bytes of the external flash memory. Caution should be applied in the user application not to corrupt the monitor flash memory space. If the monitor is corrupted, a development port tool will be required to restore operation.

dBUG Communication:

Primary user interface to the dBUG monitor is by command lines that are entered into the serial port. These commands are defined in the following table “dBUG Commands”. For serial communications, dBUG requires eight data bits, no parity, and one stop bit, 8N1 with XON/XOFF soft flow control. The default baud rate is 19200 however, this rate can be changed by the user with a “set” command. The command line prompt is “dBUG> “. Any dBUG command may be entered from this prompt. dBUG does not allow command lines to exceed 80 characters. Wherever possible, dBUG displays data in 80 columns or less. dBUG echoes each character as it is typed, eliminating the need for any “local echo” on the terminal side. In general, dBUG is not case sensitive. Commands may be entered either in upper or lower case, depending upon the user’s equipment and preference. Only symbol names require that the exact case be used.

See the dBUG Ethernet Support section in this manual for details on operating this port.

dBUG System Initialization

The act of powering up the board will initialize the system. The processor is reset and dBUG is invoked. dBUG performs the following configurations of internal resources during the initialization:

MCF5234 clock is initialized to 100 MHz.

The instruction cache is invalidated and disabled.

The Software Watchdog Timer is disabled and internal timers are placed in a stop condition.

dBUG memory map is configured.

Interrupt Service Support

Interrupt controller register is initialized with unique interrupt level/priority pairs. Please refer to the dBUG source files on the ColdFire support CD for the complete initialization code sequence.

The Vector Base Register, VBR, points to the dBUG Flash memory space. However, a copy of the exception table is made at address \$00000000 in SDRAM memory space. To take over an exception vector, the user places the address of the exception handler in the appropriate vector in the vector table located at 0x00000000, and then points the VBR register to 0x00000000. See the MCF5234 User Guide and ColdFire Programmers Reference Manual for more details on applying interrupts.

dBUG Memory Map

0x00000000 0x000003FF	External SDRAM Memory: User Vector table if applied. See Interrupt Support for more information. 1K bytes
0x00000400 0x0001FFFF	External SDRAM Memory: dBUG reserved ram space. 128K bytes
0x00010000 0x00FFFFFF	External SDRAM Memory: User ram or development memory space 16M bytes, 32 bits wide
0x01000000 - 0x1FFFFFFF	Not applied memory space. reserved
0x20000000 0x2000FFFF	MCF5234 Internal SRAM memory space, user space. 64K bytes, 32 bits wide
0x20010000 - 0x3FFFFFFF	Not applied memory space. reserved
0x40000000 0x7FFFFFFF	ISBAR: MCF5234 Internal register and peripheral space. Refer to MCF5234 User Manual for details.
0x80000000 - 0xFFDFFFFF	Not applied memory space. reserved
0xFFE00000 0xFFE3FFFF	dBUG Monitor Flash Memory Space. reserved 256K bytes
0xFFE40000 0xFFFFFFFF	User External Flash Memory Space 1.8M bytes, 16 bits wide

Note: Applying BDM / JTAG development port tools does not require following the dBUG memory map.

dBUG Commands

After the system initialization, the dBUG waits for a command-line input from the user terminal. When a proper command is entered, the operation continues in one of the two basic modes. If the command causes execution of the user program, the dBUG firmware may or may not be re-entered, at the discretion of the user's program. For the alternate case, the command will be executed under control of the dBUG firmware, and after command completion, the system returns to command entry mode.

dBUG Command Table

MNEMONIC	SYNTAX	DESCRIPTION
ASM	asm <<addr> stmt	Assemble
BC	bc addr1 addr2 length	Block Compare
BF	bf <width> begin end data <inc>	Block Fill
BM	bm begin end dest	Block Move
BR	br addr <-r> <-c count> <-t trigger>	Breakpoint
BS	bs <width> begin end data	Block Search
DC	dc value	Data Convert
DI	di <addr>	Disassemble
DL	dl <offset>	Download Serial
DLDEBUG	dldbug	Download dBUG Update
DN	dn <-c> <-e> <-i> <-s> <-o offset> <filename>	Download Network
FL	fl <command> dest <src> size	Flash write or erase
GO	go <addr>	Execute
GT	gt addr	Execute To
HELP	help <command>	Help
IRD	ird <module.register> Internal	Internal Register Display
IRM	irm module.register data	Internal Register Modify
LR	lr <width> addr	Loop Read
LW	lw <width> addr data	Loop Write
MD	md <width> <begin> <end>	Memory Display
MM	mm <width> addr <data>	Memory Modify
MMAP	mmap	Memory Map Display
RD	rd <reg>	Register Display (core)
RM	rm reg data	Register Modify (core)
RESET	reset	Reset
SD	sd	Stack Display (contents)
SET	set <option value>	Set Configurations
SHOW	show <option>	Show Configurations
STEP	step	Step (Over)
SYM	symbol <symb> <-a symb value> <-r symb> <-C I s>	Symbol Management
TRACE	trace <num>	Trace (Into)
UP	up begin end filename	Upload binary data
VER	version	Show dBUG Version

During command execution, additional user input may be required depending on the command function. For commands that accept an optional <width> to modify the memory access size, the valid values are:

- B = 8-bit (byte) access
- W = 16-bit (word) access
- L = 32-bit (long) access

When no <width> option is provided, the default width is “W”, 16-bit.

The core ColdFire register set is maintained by dBUG. These are listed below:

- A0 - A7
- D0 - D7
- PC
- SR

All control registers on ColdFire are not readable by the supervisor-programming model, and thus not accessible via dBUG. User code may change these registers, but caution must be exercised as changes may render dBUG inoperable. A reference to “SP” (stack pointer) actually refers to general purpose address register seven, “A7.”

The commands DI, GO, MD, STEP and TRACE are used repeatedly when debugging. dBUG recognizes this and allows for repeated execution of these commands with minimal typing. After a command is entered, simply press <RETURN> or <ENTER> to invoke the command again. The command is executed as if no command line parameters were provided.

User programs are provided access to various dBUG routines by the “Trap 15 Functions”. These functions are discussed at the end of this chapter.

dBUG Ethernet Support

Ethernet support by the dBUG monitor is limited to TFTP (Trivial File Transfer Protocol) downloads of object code files. Note that this operation requires an Ethernet TFTP server to be running on the host (usually a PC) attached to the development board. The support CD provides simple TFTP host software (TFTPD32) for a Windows based PC if needed. Prior to using this feature, several parameters must be configured for network downloads to occur. The information that is required and the steps for configuring dBUG are described below.

Required Network Parameters: To perform network downloads, dBUG needs 7 parameters of which 5 are network-related and 2 are download-related. The parameters are listed below, with the dBUG designation following in parenthesis. All computers connected to an Ethernet network running the IP protocol need 4 network-specific parameters. These parameters are:

- Internet Protocol
- IP address for the computer (client IP)
- IP address of the Gateway for non-local traffic (gateway IP)
- Network netmask for flagging traffic as local or non-local (netmask)

In addition, the dBUG network download command requires the following three parameters:

- IP address of the TFTP server (server IP)
- Name of the file to download (filename)
- Type of the file to download (file type of S-record, COFF, ELF, or Image)

Your local system administrator can assign a unique IP address for the board, and also provide you the IP addresses of the gateway, netmask, and TFTP server. Fill out the lines below with this information:

Client IP: ____ . ____ . ____ . ____ (IP address of the board)

Server IP: ____ . ____ . ____ . ____ (IP address of the TFTP server)

Gateway: ____ . ____ . ____ . ____ (IP address of the gateway)

Netmask: ____ . ____ . ____ . ____ (Network netmask)

Configuring dBUG Network Parameters

Once the network parameters are known, the dBUG Monitor must be configured. The following commands are used to configure the network parameters:

```
set client <client IP>
set server <server IP>
set gateway <gateway IP>
set netmask <netmask>
set mac <addr>
```

For an example, the TFTP server has IP address of 123.45.67.1. The board is assigned the IP address of 123.45.68.15. The gateway IP address is 123.45.68.250, and the netmask is 255.255.255.0. The MAC address is chosen arbitrarily and is unique. The commands to dBUG are:

```
set client 123.45.68.15
```

```
set server 123.45.67.1
```

```
set gateway 123.45.68.250
```

```
set netmask 255.255.255.0
```

```
set mac 00:CF:52:82:EB:01
```

The last step is to inform dBUG of the name and type of the file to download. Prior to giving the name of the file, keep in mind that the host TFTP server will require the file to be transferred be in the TFTP server's assigned base directory or a subdirectory from the base directory (depends on security settings). See the TFTP server software setup configuration and help file to locate or change this directory.

A default file name for network downloads is maintained by dBUG. To change the default file name, use the command:

```
set filename <filename>
```

When using the Ethernet network for download, either S-record, COFF, ELF, or Image files may be downloaded. A default file type for network downloads is maintained by dBUG as well. To change the default file type, use the command:

```
set filetype <S record | coff | elf | image>
```

Continuing with the above example, the Coldfire C compiler produces an executable COFF file, 'example.out'. This file is copied to the TFTP server base directory for download to dBUG. Note: If the TFTP server base directory is assigned to the compiler output files directory on the host PC, no file copy to another directory is required.

Change the dBUG default filename and file type with the commands:

```
set filename example.out
```

```
set filetype coff
```

Finally, perform the network download with the 'dn' command. The network download process uses the configured IP addresses and the default filename and file type for initiating a TFTP download from the TFTP server.

Appendix 1: dBUG Command Set

ASM - Assembler

Usage: **ASM <<addr> stmt>**

The ASM command is a primitive assembler. The <stmt> is assembled and the resulting code placed at <addr>. This command has an interactive and non-interactive mode of operation.

The value for address <addr> may be an absolute address specified as a hexadecimal value, or a symbol name. The value for stmt must be valid assembler mnemonics for the CPU.

For the interactive mode, the user enters the command and the optional <addr>. If the address is not specified, then the last address is used. The memory contents at the address are disassembled, and the user prompted for the new assembly. If valid, the new assembly is placed into memory, and the address incremented accordingly. If the assembly is not valid, then memory is not modified, and an error message produced. In either case, memory is disassembled and the process repeats.

The user may press the <Enter> or <Return> key to accept the current memory contents and skip to the next instruction, or a enter period to quit the interactive mode.

In the non-interactive mode, the user specifies the address and the assembly statement on the command line. The statement is the assembled, and if valid, placed into memory, otherwise an error message is produced.

Examples:

To place a NOP instruction at address 0x0001_0000, the command is:

```
asm 10000 nop
```

To interactively assembly memory at address 0x0040_0000, the command is:

```
asm 400000
```

BC - Block Compare

Usage: **BC addr1 addr2 length**

The BC command compares two contiguous blocks of memory on a byte by byte basis. The first block starts at address **addr1** and the second starts at address **addr2**, both of **length** bytes.

If the blocks are not identical, the address of the first mismatch is displayed. The value for addresses **addr1** and **addr2** may be an absolute address specified as a hexadecimal value or a symbol name. The value for **length** may be a symbol name or a number converted according to the user defined radix (hexadecimal by default).

Example:

To verify that the data starting at 0x20000 and ending at 0x3_0000 is identical to the data starting at 0x8_0000, the command is:

```
bc 20000 80000 10000
```

BF - Block Fill

Usage: **BF<width> begin end data <inc>**

The BF command fills a contiguous block of memory starting at address **begin**, stopping at address **end**, with the value **data**. **<Width>** modifies the size of the data that is written. If no **<width>** is specified, the default of word sized data is used.

The value for addresses **begin** and **end** may be an absolute address specified as a hexadecimal value, or a symbol name. The value for **data** may be a symbol name, or a number converted according to the user-defined radix, normally hexadecimal.

The optional value **<inc>** can be used to increment (or decrement) the data value during the fill.

This command first aligns the starting address for the data access size, and then increments the address accordingly during the operation. Thus, for the duration of the operation, this command performs properly-aligned memory accesses.

Examples:

To fill a memory block starting at 0x2_0000 and ending at 0x4_0000 with the value 0x1234, the command is:

```
bf 20000 40000 1234
```

To fill a block of memory starting at 0x20000 and ending at 0x4_0000 with a byte value of 0xAB, the command is:

```
bf.b 20000 40000 AB
```

To zero out the BSS section of the target code (defined by the symbols `bss_start` and `bss_end`), the command is:

```
bf bss_start bss_end 0
```

To fill a block of memory starting at `0x2_0000` and ending at `0x4_0000` with data that increments by 2 for each `<width>`, the command is:

```
bf 20000 40000 0 2
```

BM - Block Move

Usage: **BM begin end dest**

The BM command moves a block of memory starting at address **begin** and stopping at address **end** to the new address **dest**. The BM command copies memory as a series of bytes, and does not alter the original block.

The values for addresses `begin`, `end`, and `dest` may be absolute addresses specified as hexadecimal values, or symbol names. If the destination address overlaps the block defined by `begin` and `end`, an error message is produced and the command exits.

Examples:

To copy a block of memory starting at `0x4_0000` and ending at `0x7_0000` to the location `0x200000`, the command is:

```
bm 40000 70000 200000
```

To copy the target code's data section (defined by the symbols `data_start` and `data_end`) to `0x200000`, the command is:

```
bm data_start data_end 200000
```

NOTE: Refer to "upuser" command for copying code/data into Flash memory.

BR - Breakpoints

Usage: **BR addr <-r> <-c count> <-t trigger>**

The BR command inserts or removes breakpoints at address **addr**. The value for `addr` may be an absolute address specified as a hexadecimal value, or a symbol name. Count and trigger are numbers converted according to the user-defined radix, normally hexadecimal.

If no argument is provided to the BR command, a listing of all defined breakpoints is displayed.

The `-r` option to the BR command removes a breakpoint defined at address `addr`. If no address is specified in conjunction with the `-r` option, then all breakpoints are removed.

Each time a breakpoint is encountered during the execution of target code, its count value is incremented by one. By default, the initial count value for a breakpoint is zero, but the `-c` option allows setting the initial count for the breakpoint.

Each time a breakpoint is encountered during the execution of target code, the count value is compared against the trigger value. If the count value is equal to or greater than the trigger value, a breakpoint is encountered and control returned to **dBUG**. By default, the initial trigger value for a breakpoint is one, but the **-t** option allows setting the initial trigger for the breakpoint.

If no address is specified in conjunction with the **-c** or **-t** options, then all breakpoints are initialized to the values specified by the **-c** or **-t** option.

Examples:

To set a breakpoint at the C function `main()` (symbol `_main`; see “symbol” command), the command is:

```
br _main
```

When the target code is executed and the processor reaches `main()`, control will be returned to **dBUG**.

To set a breakpoint at the C function `bench()` and set its trigger value to 3, the command is:

```
br _bench -t 3
```

When the target code is executed, the processor must attempt to execute the function `bench()` a third time before returning control back to **dBUG**.

To remove all breakpoints, the command is:

```
br -r
```

BS - Block Search

Usage: **BS<width> begin end data**

The BS command searches a contiguous block of memory starting at address **begin**, stopping at address **end**, for the value **data**. **<Width>** modifies the size of the data that is compared during the search. If no **<width>** is specified, the default of word sized data is used.

The values for addresses **begin** and **end** may be absolute addresses specified as hexadecimal values, or symbol names. The value for **data** may be a symbol name or a number converted according to the user-defined radix, normally hexadecimal.

This command first aligns the starting address for the data access size, and then increments the address accordingly during the operation. Thus, for the duration of the operation, this command performs properly-aligned memory accesses.

Examples:

To search for the 32-bit value 0x1234_5678 in the memory block starting at 0x4_0000 and ending at 0x7_0000:

```
bs.l 40000 70000 12345678
```

This reads the 32-bit word located at 0x0004_0000 and compares it against the 32-bit value 0x1234_5678. If no match is found, then the address is incremented to 0x0004_0004 and the next 32-bit value is read and compared.

To search for the 16-bit value 0x1234 in the memory block starting at 0x0004_0000 and ending at 0x0007_0000:

```
bs 40000 70000 1234
```

This reads the 16-bit word located at 0x4_0000 and compares it against the 16-bit value 0x0000_1234. If no match is found, then the address is incremented to 0x0004_0002 and the next 16-bit value is read and compared.

DC - Data Conversion

Usage: **DC data**

The DC command displays the hexadecimal or decimal value **data** in hexadecimal, binary, and decimal notation.

The value for data may be a symbol name or an absolute value. If an absolute value passed into the DC command is prefixed by '0x', then data is interpreted as a hexadecimal value. Otherwise data is interpreted as a decimal value.

All values are treated as 32-bit quantities.

Examples:

To display the decimal and binary equivalent of 0x1234, the command is:

```
dc 0x1234
```

To display the hexadecimal and binary equivalent of 1234, the command is:

```
dc 1234
```

DI - Disassemble

Usage: **DI <addr>**

The DI command disassembles target code pointed to by **addr**. The value for addr may be an absolute address specified as a hexadecimal value, or a symbol name.

Wherever possible, the disassembler will use information from the symbol table to produce a more meaningful disassembly. This is especially useful for branch target addresses and subroutine calls.

The DI command attempts to track the address of the last disassembled opcode. If no address is provided to the DI command, then the DI command uses the address of the last opcode that was disassembled.

The DI command is repeatable.

Examples:

To disassemble code that starts at 0x0004_0000, the command is:

```
di 40000
```

To disassemble code of the C function main(), the command is:

```
di _main
```

DL - Download Console

Usage: DL <offset>

The DL command performs an S-record download of data obtained from the console or serial port. The value for offset is converted according to the user-defined radix, normally hexadecimal.

If **offset** is provided, then the destination address of each S-record is adjusted by offset.

The DL command checks the destination download address for validity. If the destination is an address outside the defined user space, then an error message is displayed and downloading aborted.

If the destination address is in the user flash memory space, the flash will be programmed but not erased. See the FL command for flash erasing.

If the S-record file contains the entry point address, then the program counter is set to reflect this address.

Examples:

To download an S-record file through the serial port, the command is:

```
dl
```

To download an S-record file through the serial port, and add an offset to the destination address of 0x40000, the command is:

```
dl 0x40000
```

After the DL command is invoked, the user should select file transfer or upload and send the S-record file from the host. The host serial terminal software should apply XON/XOFF flow control to the transfer if the target memory is Flash space to allow flash programming time delays. Alternate method is to download with an offset into SDRAM memory space and then apply the FL command to program the flash memory space.

DLDEBUG – Download dBUG (update)

Usage: `dldbug`

The `dldbug` command is used to update the dBUG image in Flash memory. When updates to the MCF5234 dBUG are available, the update S-record may be downloaded into the flash from the console or serial port similar to the DL command. The user is prompted for verification before performing the operation (note case sensitivity here). XON/XOFF serial flow control must be applied when loading the new S-record. Use this command with extreme caution, as any error can render dBUG useless!

DN - Download Network

Usage: `DN <-c> <-e> <-i> <-s> <-o offset> <filename>`

The DN command downloads code from the network. The DN command will handle files that are S-record, COFF, ELF or Image formats. The DN command uses Trivial File Transfer Protocol (TFTP) to transfer files from a network host.

In general, the type of file to be downloaded and the name of the file must be specified to the DN command. The `-c` option indicates a COFF download, the `-e` option indicates an ELF download, the `-i` option indicates an Image download, and the `-s` indicates an S-record download. The `-o` option works only in conjunction with the `-s` option to indicate an optional offset for S-record download. The filename is passed directly to the TFTP server and therefore must be a valid filename on the server.

If neither of the `-c`, `-e`, `-i`, `-s` or filename options are specified, then a default filename and file type will be used. Default filename and file type parameters are manipulated using the SET and SHOW commands.

The DN command checks the destination download address for validity. If the destination is an address outside the defined user space, then an error message is displayed and downloading aborted.

For ELF and COFF files that contain symbolic debug information, the symbol tables are extracted from the file during download and used by **dBUG**. Only global symbols are kept in **dBUG**. The **dBUG** symbol table is not cleared prior to downloading, so it is the user's responsibility to clear the symbol table as necessary prior to downloading.

If an entry point address is specified in the S-record, COFF or ELF file, the program counter is set accordingly.

Examples:

To download an S-record file with the name "srec.out", the command is:

```
dn -s srec.out
```

To download a COFF file with the name “coff.out”, the command is:

```
dn -c coff.out
```

To download a file using the default file type with the name “bench.out”, the command is:

```
dn bench.out
```

To download a file using the default filename and file type, the command is:

```
dn
```

FL – Flash Load or Erase

Usage: FL <command> dest <src> <size>

The FL command is used to erase and write the external flash memory, and display flash device sector information. Erase or write operations must be performed in even sector block sizes. The write command will erase all of the associated flash sectors prior to writing. If the write destination address or byte count range does not provide an even sector boundary, dBUG will prompt the user to continue.

External flash destination address (FFF40000 – FFFFFFFE) must be word aligned (2 byte) and the byte count must be in word (2 byte) or even number multiples.

To download S-record files directly into the flash, please see the DL command.

Examples:

To view the flash device sector information, the command is:

```
fl
```

To copy 0x4000 (16K) bytes of data from internal SRAM (0x20000000) to external flash at 0xFFE40000, the command is:

```
fl write FFE40000 20000000 4000
```

Note that the above command will cause dBUG to prompt the user to continue due to the addressed sector size is larger than 0x4000 bytes in this case. User should type in “YES” to continue or any other key to stop the operation.

Sector range values:

1000 = 4K bytes, 2000 = 8K bytes, 8000 = 32K bytes, 10000 = 64 K bytes.

To erase all user sectors of the external flash, the command is:

```
fl erase FFE40000 1C0000
```

GO – Execute user code

Usage: **GO <addr>**

The GO command executes target code starting at address **addr**. The value for addr may be an absolute address specified as a hexadecimal value, or a symbol name.

If no argument is provided, the GO command begins executing instructions at the current program counter.

When the GO command is executed, all user-defined breakpoints are inserted into the target code, and the context is switched to the target program. Control is only regained when the target code encounters a breakpoint, illegal instruction, or other exception that causes control to be handed back to **dBUG**.

The GO command is repeatable.

Examples:

To execute code at the current program counter, the command is:

```
go
```

To execute code at the C function main(), the command is:

```
go _main
```

To execute code at the address 0x00040000, the command is:

```
go 40000
```

GT - Execute To Address

Usage: **GT addr**

The GT command inserts a temporary software breakpoint at **addr** and then executes target code starting at the current program counter. The value for addr may be an absolute address specified as a hexadecimal value, or a symbol name.

When the GT command is executed, all breakpoints are inserted into the target code, and the context is switched to the target program. Control is only regained when the target code encounters a breakpoint, illegal instruction, or an exception which causes control to be handed back to **dBUG**.

Examples:

To execute code up to the C function bench(), the command is:

```
gt _bench
```

To execute code up to the address 0x00080004, the command is:

gt 80004

IRD - Internal Register Display

Usage: IRD <module.register>

This command displays the internal registers of the different modules inside the MCF5234. In the command line, module refers to the module name where the register is located and register refers to the specific register to display.

The registers are organized according to the module to which they belong. The available modules on the MCF5234 are:

SCM, CS0, CS1, CS2, CS3, CS4, CS5, CS6, GPIO, QSPI, DMA0, DMA1, DMA2, DMA3, UART0, UART1, UART2, SDRAMC, TIMER0, TIMER1, TIMER2, TIMER3, FEC, CAN, I2C, WDT, PIT0, PIT1, PIT2, PIT3, QADC, GPTA, GPTB, RESET, CCM, PMM, CLOCK, EPORT, CFM, INTC0, and INTC1.

Refer to the MCF5234 user's manual for more information on these modules and the registers they contain.

Example:

```
ird cs0.csar
```

IRM - Internal Register Modify

Usage: IRM module.register data

This command modifies the contents of the internal registers of different modules inside the MCF5234. In the command line, module refers to the module name where the register is located and register refers to the specific register to modify. The data parameter specifies the new value to be written into the register.

The registers are organized according to the module to which they belong. The available modules on the MCF5234 are:

SCM, CS0, CS1, CS2, CS3, CS4, CS5, CS6, GPIO, QSPI, DMA0, DMA1, DMA2, DMA3, UART0, UART1, UART2, SDRAMC, TIMER0, TIMER1, TIMER2, TIMER3, FEC, CAN, I2C, WDT, PIT0, PIT1, PIT2, PIT3, QADC, GPTA, GPTB, RESET, CCM, PMM, CLOCK, EPORT, CFM, INTC0, and INTC1.

Refer to the MCF5234 user's manual for more information on these modules and the registers they contain.

Example:

To modify the CSAR register in the CS1 chip select module to the value 0x4000, the command is:

```
irm cs1.csar 4000
```

HELP - Help

Usage: **HELP <command>**

The HELP command displays a brief syntax of the commands available within **dBUG**. In addition, the address of where user code may start is given. If command is provided, then a brief listing of the syntax of the specified command is displayed.

Examples:

To obtain a listing of all the commands available within **dBUG**, the command is:

```
help
```

To obtain help on the breakpoint command, the command is:

```
help br
```

LR - Loop Read

Usage: **LR <width> addr**

The LR command continually reads the data at **addr** until a key is pressed. The optional **<width>** specifies the size of the data to be read. If no **<width>** is specified, the command defaults to reading word sized data.

Example:

To continually read the word data from address 0xFFF2_0000, the command is:

```
lr FFF20000
```

LW - Loop Write

Usage: **LW <width> addr data**

The LW command continually writes data to **addr**. The optional width specifies the size of the access to memory. The default access size is a word.

Examples:

To continually write the data 0x1234_5678 to address 0x0002_0000, the command is:

```
lw.l 20000 12345678
```

Note that the following command writes 0x78 into memory:

```
lw.b 20000 78
```

MD - Memory Display

Usage: MD **<width>** **<begin>** **<end>**

The MD command displays a contiguous block of memory starting at address begin and stopping at address end. The values for addresses begin and end may be absolute addresses specified as hexadecimal values, or symbol names. Width modifies the size of the data that is displayed. If no **<width>** is specified, the default of word sized data is used.

Memory display starts at the address begin. If no beginning address is provided, the MD command uses the last address that was displayed. If no ending address is provided, then MD will display memory up to an address that is 128 beyond the starting address.

This command first aligns the starting address for the data access size, and then increments the address accordingly during the operation. Thus, for the duration of the operation, this command performs properly-aligned memory accesses.

Examples:

To display memory at address 0x0040_0000, the command is:

```
md 40000
```

To display memory in the data section (defined by the symbols data_start and data_end), the command is:

```
md data_start
```

To display a range of bytes from 0x00040000 to 0x0005_0000, the command is:

```
md.b 40000 50000
```

To display a range of 32-bit values starting at 0x0004_0000 and ending at 0x0005_0000:

```
md 40000 50000
```

MM - Memory Modify

Usage: MM**<width>** **addr** **<data>**

The MM command modifies memory at the address **addr**. The value for addr may be an absolute address specified as a hexadecimal value, or a symbol name. Width specifies the size of the data that is modified. If no **<width>** is specified, the default of word sized data is used. The value for **data** may be a symbol name, or a number converted according to the user-defined radix, normally hexadecimal.

If a value for data is provided, then the MM command immediately sets the contents of addr to data.

If no value for data is provided, then the MM command enters into a loop. The loop obtains a value for data, sets the contents of the current address to data, increments the address according to the data size, and repeats. The loop terminates when an invalid entry for the data value is entered, for instance a period '.'.

This command first aligns the starting address for the data access size, and then increments the address accordingly during the operation. Thus, for the duration of the operation, this command performs properly-aligned memory accesses.

Examples:

To set the byte at location 0x0001_0000 to be 0xFF, the command is:

```
mm.b 10000 FF
```

To interactively modify memory beginning at 0x0001_0000, the command is:

```
mm 10000
```

MMAP - Memory Map Display

Usage: **mmap**

This command displays the memory map information for the evaluation board. The information displayed includes the type of memory, the start and end address of the memory, and the port size of the memory. The display also includes information on how the Chip-selects are used on the board.

Here is an example of the output from this command:

Type	Start	End	Port size
SDRAM	0x00000000	0x003FFFFFFF	32-bit
SRAM (int)	0x20000000	0x2000FFFF	32-bit
ISPBAR	0x40000000	0x7FFFFFFF	32-bit
FLASH (ext)	0xFFE00000	0xFFFFFFFF	16-bit
Protected	Start	End	
dBUG code	0xFFE00000	0xFFE3FFFF	
dBUG data	0x00000400	0x0001FFFF	
Chip Selects			
CS0 Flash			

RD - Register Display

Usage: RD <reg>

The RD command displays the register set of the target. If no argument for **reg** is provided, then all registers are displayed. Otherwise, the value for reg is displayed.

dBUG preserves the registers by storing a copy of the register set in a buffer. The RD command displays register values from the register buffer.

Examples:

To display only the program counter:

```
rd pc
```

To display all the registers and their values, the command is:

```
rd
```

Here is an example of the output from this command:

```
PC: 00000000 SR: 2000 [t.Sm.000...xnzvc]
```

```
An: 00000000 00000000 00000000 00000000 00000000 00000000 00000000 01000000
```

```
Dn: 00000000 00000000 00000000 00000000 00000000 00000000 00000000 00000000
```

RM - Register Modify

Usage: RM reg data

The RM command modifies the contents of the register **reg** to data. The value for reg is the name of the register, and the value for data may be a symbol name, or it is converted according to the user-defined radix, normally hexadecimal.

dBUG preserves the registers by storing a copy of the register set in a buffer. The RM command updates the copy of the register in the buffer. The actual value will not be written to the register until target code is executed.

Example:

To change program counter to contain the value 0x2000_8000, the command is:

```
rm pc 20008000
```

RESET - Reset the Board and dBUG

Usage: **RESET**

The RESET command resets the board and **dBUG** to their initial power-on states.

The RESET command executes the same sequence of code that occurs at power-on. If the RESET command fails to reset the board properly, cycle the power or press the RESET button.

Examples:

To reset the board and clear the **dBUG** data structures, the command is:

```
reset
```

SET - Set Configurations

Usage: **SET <option value>**

The SET command allows the setting of user-configurable options within **dBUG**. With no arguments, SET displays the options and values available. The SHOW command displays the settings in the appropriate format. Note that some configuration items will not take effect until a Reset has occurred. The standard set of options is listed below.

baud - This is the baud rate for the first serial port on the board. All communications between **dBUG** and the user occur using 19200 bps, eight data bits, no parity, and one stop bit, 8N1, with no flow control.

base - This is the default radix for use in converting a number from its ASCII text representation to the internal quantity used by **dBUG**. The default is hexadecimal (base 16), and other choices are binary (base 2), octal (base 8), and decimal (base 10).

client - This is the network Internet Protocol (IP) address of the board. For network communications, the client IP is required to be set to a unique value, usually assigned by your local network administrator.

server - This is the network IP address of the machine which contains files accessible via TFTP. Your local network administrator will have this information and can assist in properly configuring a TFTP server if one does not exist.

gateway - This is the network IP address of the gateway for your local subnetwork. If the client IP address and server IP address are not on the same subnetwork, then this option must be properly set. Your local network administrator will have this information.

netmask - This is the network address mask to determine if use of a gateway is required. This field must be properly set. Your local network administrator will have this information.

filename - This is the default filename to be used for network download if no name is provided to the DN command.

filetype - This is the default file type to be used for network download if no type is provided to the DN command. Valid values are: “srecord”, “coff”, and “elf”.

mac - This is the Ethernet Media Access Control (MAC) address (a.k.a hardware address) for the evaluation board. This should be set to a unique value, and the most significant nibble should always be even.

Examples:

To set the baud rate of the board to be 38400, the command is:

```
set baud 38400
```

NOTE: See the SHOW command for a display containing the correct formatting of these options. See the dBUG Ethernet support for additional details on network settings.

SHOW - Show Configurations

Usage: **SHOW <option>**

The SHOW command displays the settings of the user-configurable options within **dBUG**. When no option is provided, SHOW displays all options and values.

Examples:

To display the current baud rate of the board, the command is:

```
show baud
```

To display all options and settings, the command is:

```
show
```

Here is an example of the output from a show command:

```
dBUG> show
base: 16
baud: 19200
server: 192.0.0.1
client: 192.0.0.2
gateway: 0.0.0.0
netmask: 255.255.255.0
filename: test.srec
filetype: S-Record
ethaddr: 00:CF:52:49:C3:01
```

STEP - Step Over

Usage: **STEP**

The STEP command can be used to “step over” a subroutine call, rather than tracing every instruction in the subroutine. The ST command sets a temporary software breakpoint one instruction beyond the current program counter and then executes the target code.

The STEP command can be used to “step over” BSR and JSR instructions.

The STEP command will work for other instructions as well, but note that if the STEP command is used with an instruction that will not return, i.e. BRA, then the temporary breakpoint may never be encountered and **dBUG** may never regain control.

Examples:

To pass over a subroutine call, the command is:

```
step
```

SYMBOL - Symbol Name Management

Usage: **SYMBOL <symp> <-a symp value> <-r symp> <-c|l|s>**

The SYMBOL command adds or removes **symbol** names from the symbol table. If only a symbol name is provided to the SYMBOL command, then the symbol table is searched for a match on the symbol name and its information displayed.

-a option adds a symbol name and its value into the symbol table.

-r option removes a symbol name from the table.

-c option clears the entire symbol table.

-l option lists the contents of the symbol table.

-s option displays usage information for the symbol table.

Symbol names contained in the symbol table are truncated to 31 characters. Any symbol table lookups, either by the SYMBOL command or by the disassembler, will only use the first 31 characters. Symbol names are case-sensitive.

Symbols can also be added to the symbol table via in-line assembly labels and Ethernet downloads of ELF formatted files.

Examples:

To define the symbol “main” to have the value 0x0004_0000, the command is:

```
symbol -a main 40000
```

To remove the symbol “junk” from the table, the command is:

```
symbol -r junk
```

To see how full the symbol table is, the command is:

```
symbol -s
```

To display the symbol table, the command is:

```
symbol -l
```

TRACE - Trace Into

Usage: **TRACE <num>**

The TRACE command allows single-instruction execution. If **num** is provided, then num instructions are executed before control is handed back to **dBUG**. The value for num is a decimal number.

The TRACE command sets bits in the processors' supervisor registers to achieve single-instruction execution, and the target code executed. Control returns to **dBUG** after a single-instruction execution of the target code.

This command is repeatable.

Examples:

To trace one instruction at the program counter, the command is:

```
tr
```

To trace 20 instructions from the program counter, the command is:

```
tr 20
```

UP – Upload network

Usage: **UP begin end filename**

The UP command transfers binary data stored in memory on the development board to the host via the network connection. The transfer applies the same network settings as the DN command but provides the new file name on the host.

Examples:

To send memory data from 0x00020000 to 0x0002FFFF as file name test.bin to the network host, the command is:

```
up 20000 2FFFF test.bin
```

VERSION - Display dBUG Version

Usage: **VERSION**

The VERSION command displays the version information for **dBUG**. The **dBUG** version, build number and build date are all given.

The version number is separated by a decimal, for example, "v 2b.1c.1a".

The version date is the day and time at which the entire **dBUG** monitor was compiled and built.

Examples:

To display the version of the **dBUG** monitor, the command is:

```
ver
```

TRAP #15 Functions

An additional utility within the dBUG firmware is a function called the TRAP 15 handler. This function can be called by the user program to utilize various routines within the dBUG, perform a special task, and to return control to the dBUG. This section describes the TRAP 15 handler and how it is used.

There are four TRAP #15 functions. These are: **OUT_CHAR**, **IN_CHAR**, **CHAR_PRESENT**, and **EXIT_TO_dBUG**.

OUT_CHAR

This function (function code 0x0013) sends a character, which is in lower 8 bits of D1, to terminal. Assembly example:

```
/* assume d1 contains the character */
```

```
    move.l    #$0013,d0    Selects the function
    TRAP     #15          The character in d1 is sent to terminal
```

C example:

```
void board_out_char (int ch)
```

```
{
    /* If your C compiler produces a LINK/UNLK pair for this routine, then use the following code
    which takes this into account */
```

```
#if 1
/* LINK a6,#0      -- produced by C compiler */
asm (" move.l 8(a6),d1");    /* put 'ch'into d1 */
asm (" move.l #0x0013,d0");  /* select the function */
asm (" trap #15");          /* make the call */
/* UNLK a6        -- produced by C compiler */
```

```
#else
```

```
/* If C compiler does not produce a LINK/UNLK pair, the use the following code */
```

```
asm (" move.l 4(sp),d1");    /* put 'ch'into d1 */
```

```
asm (" move.l #0x0013,d0");    /* select the function */
asm (" trap #15");            /* make the call */
#endif
}
```

IN_CHAR

This function (function code 0x0010) returns an input character (from terminal) to the caller. The returned character is in D1.

Assembly example:

```
move.l    #$0010,d0    Select the function
trap      #15          Make the call, the input character is in d1.
```

C example:

```
int board_in_char (void)
{
    asm (" move.l #0x0010,d0");    /* select the function */
    asm (" trap #15");            /* make the call */
    asm (" move.l d1,d0");        /* put the character in d0 */
}
```

CHAR_PRESENT

This function (function code 0x0014) checks if an input character is present to receive. A value of zero is returned in D0 when no character is present. A non-zero value in D0 means a character is present.

Assembly example:

```
move.l    #$0014,d0    Select the function
trap      #15          Make the call, d0 contains the response (yes/no).
```

C example:

```
int board_char_present (void)
{
    asm (" move.l #0x0014,d0");    /* select the function */
```

```
asm (" trap #15");           /* make the call */  
  
}
```

EXIT_TO_dBUG

This function (function code 0x0000) transfers the control back to the dBUG, by terminating the user code. The register contents are preserved.

Assembly example:

move.l	#\$0000,d0	Select the function
trap	#15	Make the call, exit to dBUG.

C example:

```
void board_exit_to_dbug (void)
```

```
{  
    asm (" move.l #0x0000,d0");    /* select the function */  
    asm (" trap #15");           /* exit and transfer to dBUG */  
}
```