

56F805

Digital Power Factor Correction using
Processor Expert™
Targeting Document

56F800
16-bit Digital Signal Controllers

805DPFCTD
Rev. 0
08/2005

freescale.com

Digital Power Factor Correction

This application exercises simple control of the Power Factor Correction (PFC) without motor control on the 56F805EVM board and the EVM Motor Kit.

1. Specifications

The Digital PFC application performs power factor correction for 3-Phase AC/BLDC High-Voltage Power Stage hardware without motor drive. This demonstration evaluates the basic algorithm of power factor correction for the current hardware implementation. The PFC software was designed for use with motor control applications; the Digital PFC application allows target memory configuration of RAM and Flash.

The input power line must meet the following requirements:

- Input voltage value 115V and 60Hz
- Input voltage value 230V and 50Hz

The applications run at 230V, 50Hz by default. To switch to 115V, 60Hz, comment this line in *Digital_PFC.c*:

```
#define MILESTONE_OFFSET MKS_TO_TICK(570L) //For 50 Hz, 230 V
```

And uncomment this line:

```
//#define MILESTONE_OFFSET MKS_TO_TICK(1498L) //For 60 Hz, 115 V
```

The Digital PFC application may be used in the Manual Operating Mode. The remote control functionality of the PC master software application is not implemented.

The application can run on:

- External RAM
- Flash

1.1 Manual Operating Mode

The PFC conversion is controlled by the RUN/STOP switch (S6); see [Figure 1-1](#). The green USER LED (LED3; see [Figure 1-2](#)) indicates the application states. When the application is ready, the USER LED blinks at a 2Hz frequency. A fault state turns on the red LED1 and turns off the green LED3.

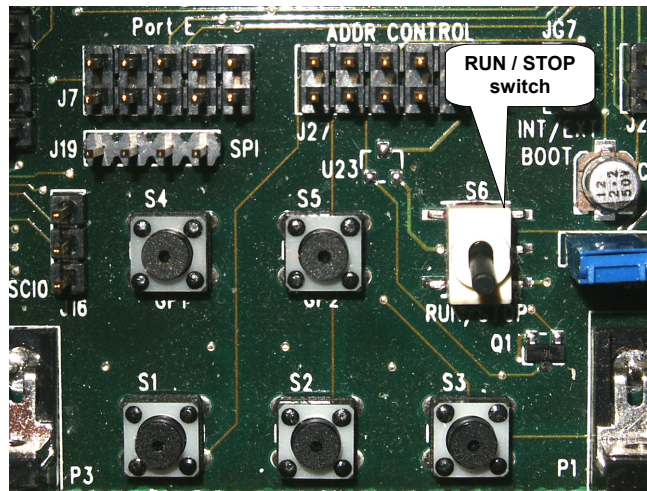


Figure 1-1 RUN/STOP Switch

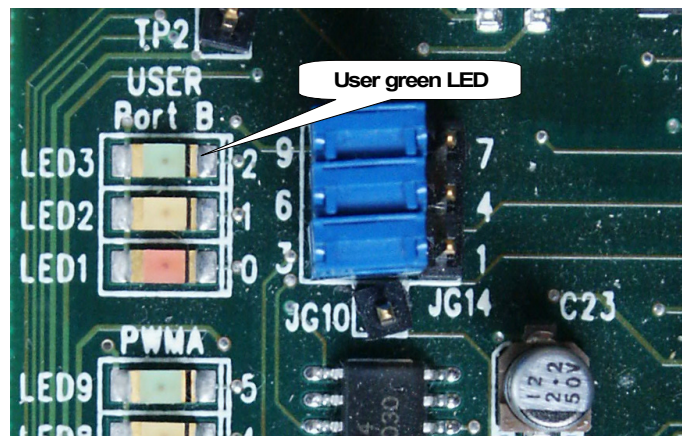


Figure 1-2 User LED

The PFC conversion can be enabled after the RUN/STOP switch is moved to the RUN position. The normal PFC conversion process is indicated by the USER LED, which will light continuously. To disable PFC conversion, the RUN/STOP switch must be moved to the STOP position.

Table 1-1 Motor Application States

Application State	Digital PFC State	LED State
Stopped	Stopped	Green LED blinking Red LED off
Running	Spinning	Green LED on Red LED off
Fault	Stopped	Green LED off Red LED on

1.2 PC Master Software (Remote) Operating Mode

The drive is monitored remotely from a PC through the SCI communication channel of the device via an RS-232 physical interface.

PC master software displays the following information:

- Application mode
- Application status
- DCBus Voltage

Application Mode Project files for the PC master software are located in:

..\PC_Master\external memory.pmp, uses Map file to run in the external memory

..\PC_Master\internal pROM-xRAM.pmp, uses Map file to run in the internal memory

..\PC_Master\internal xROM-xRAM.pmp, uses Map file to run in the internal memory

Start the PC master software window's application, *external_memory.pmp*. [Figure 1-3](#) illustrates the PC master software control window after this project has been launched.

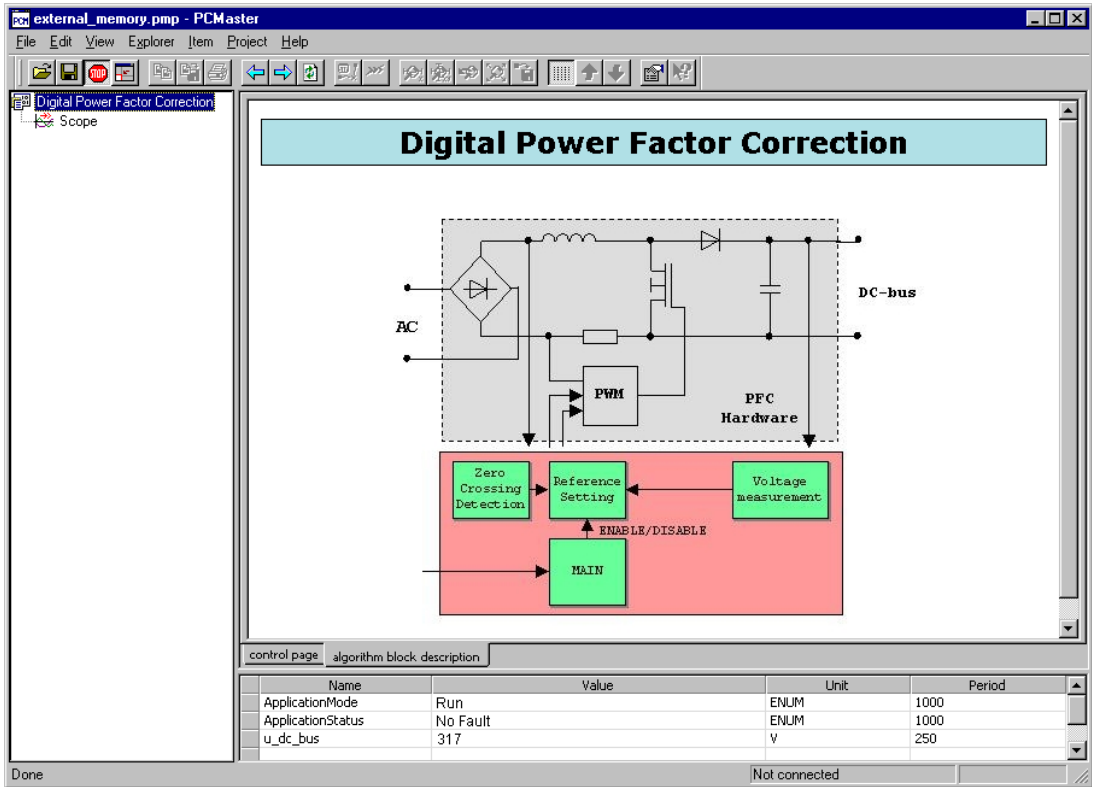


Figure 1-3 PC Master Software Control Window

2. Hardware Set-up

Figure 2-1 illustrates the hardware set-up for the Digital PFC application, which requires a motor drive. The 3-Phase AC/BLDC High-Voltage Power Stage board contains the JP201 jumper that selects the power supply device. Pins 2 and 3 of the JP201 connection correspond to a simple rectifier-capacitor power stage. The PFC hardware set-up requires closing pins 1 and 2 of the JP201 connection; see **Figure 2-2**.

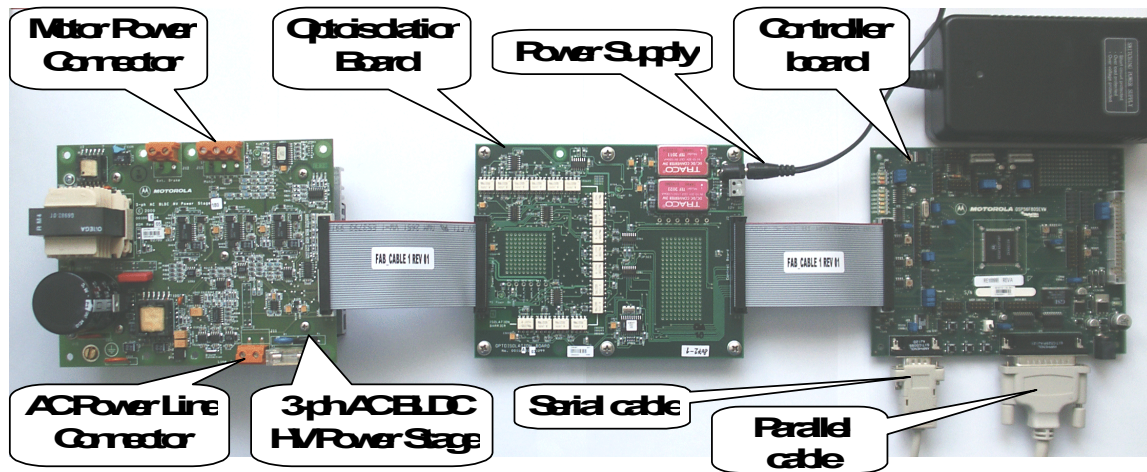


Figure 2-1 Digital PFC Application Set-up

The system is comprised of the following components:

- Controller board for 56F805
 - Supplied as 56F805EVM
 - Described in **56F805 Evaluation Module Hardware User Manual**
- 3-Phase AC BLDC High-Voltage Power Stage, 180W
 - Supplied in a kit with optoisolation board as ECOPTHIVACBLDC
 - Described in **3-Phase Brushless DC High-Voltage Power Stage**
- Optoisolation Board
 - Supplied with 3-Phase AC/BLDC HighVoltage Power Stage as ECOPTHIVACBLDC *or*
 - Supplied alone as ECOPT - optoisolation board
 - Described in **Optoisolation Board User's Manual**

Warning: It is strongly recommended that optoisolation (optocouplers and optoisolation amplifiers) be used during development to avoid damage to the development equipment.

Note: Documentation for all components can be found at <http://freescale.com>

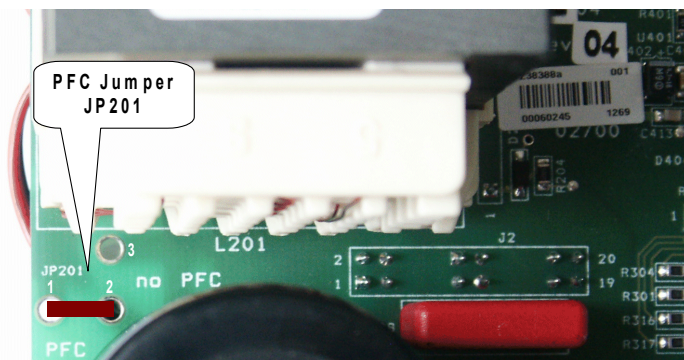


Figure 2-2 Jumper JP201 on the 3-Phase AC BLDC Power Stage

For detailed information, see the **56F805 Evaluation Module Hardware Reference Manual**. The serial cable is needed for the PC master software debugging tool only.

2.1 EVM Jumper Settings

To execute the Digital PFC application, the 56F805EVM board requires the strap settings shown in **Figure 2-3** and **Table 2-1**.

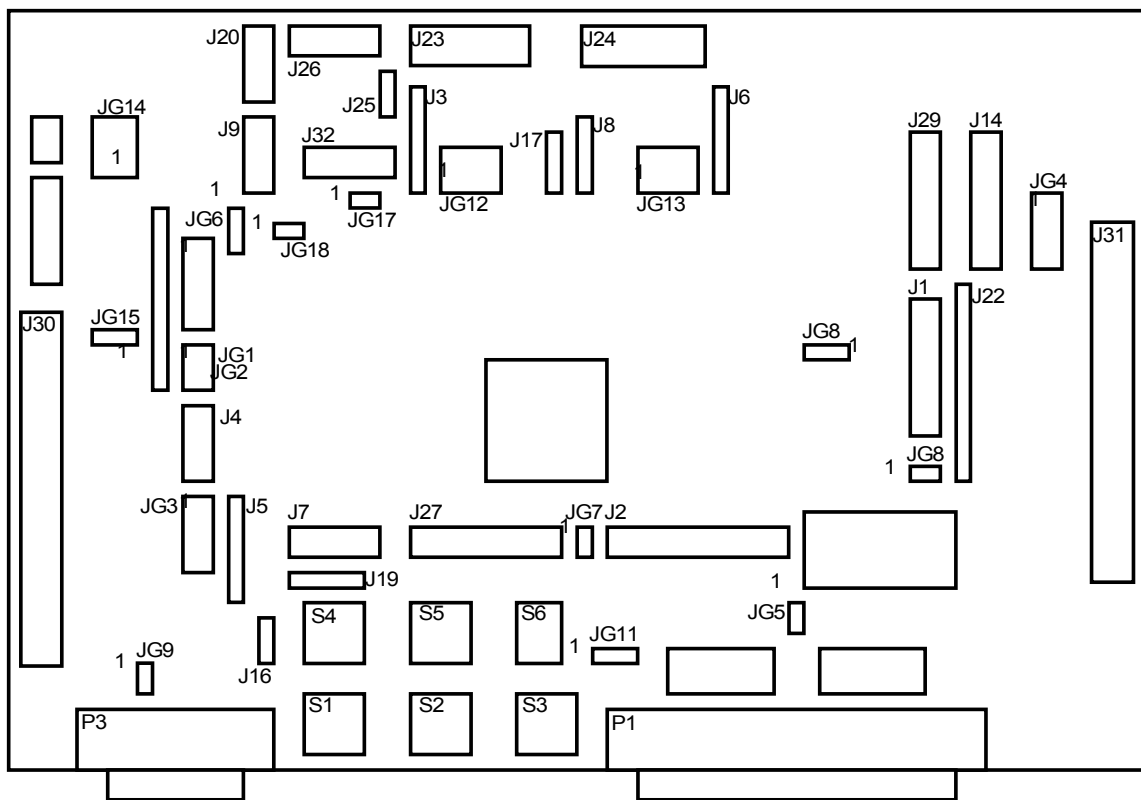


Figure 2-3 56F805EVM Jumper Reference

Table 2-1 56F805EVM Jumper Settings

Jumper Group	Comment	Connections
JG1	PD0 input selected as a high	1-2
JG2	PD1 input selected as a high	1-2
JG3	Primary UNI-3 serial selected	1-2, 3-4, 5-6, 7-8
JG4	Secondary UNI-3 serial selected	1-2, 3-4, 5-6, 7-8
JG5	Enables on-board parallel JTAG Command Converter Interface	NC
JG6	Uses on-board crystal for oscillator input	2-3
JG7	Selects Mode 0 operation upon exit from reset	1-2
JG8	Enables on-board SRAM	1-2
JG9	Enables RS-232 output	1-2
JG10	Secondary UNI-3 Analog temperature input unused	NC
JG11	Uses Host power for Host target interface	1-2
JG12	Primary Encoder input selected for Quad Encoder signals	2-3, 5-6, 8-9
JG13	Secondary Encoder input selected	2-3, 5-6, 8-9
JG14	Primary UNI-3 3-Phase Current Sense selected as Analog Inputs	2-3, 5-6, 8-9
JG15	Secondary UNI-3 Phase A Overcurrent selected for FAULTA1	1-2
JG16	Secondary UNI-3 Phase B Overcurrent selected for FAULTB1	1-2
JG17	CAN termination unselected	NC
JG18	Uses on-board crystal for controller oscillator input	1-2

Note: When running the EVM target system in a stand-alone mode from Flash, the JG5 jumper must be set in the 1-2 configuration to disable the command converter parallel port interface.

3. Build

When building the Digital PFC Application, the user can create an application that runs from internal Flash or External RAM. To select the type of application to build, open the *digital_PFC.mcp* project and choose the target build type; see [Figure 3-1](#). A definition of the projects associated with these target build types may be viewed under the *Targets* tab of the project window.

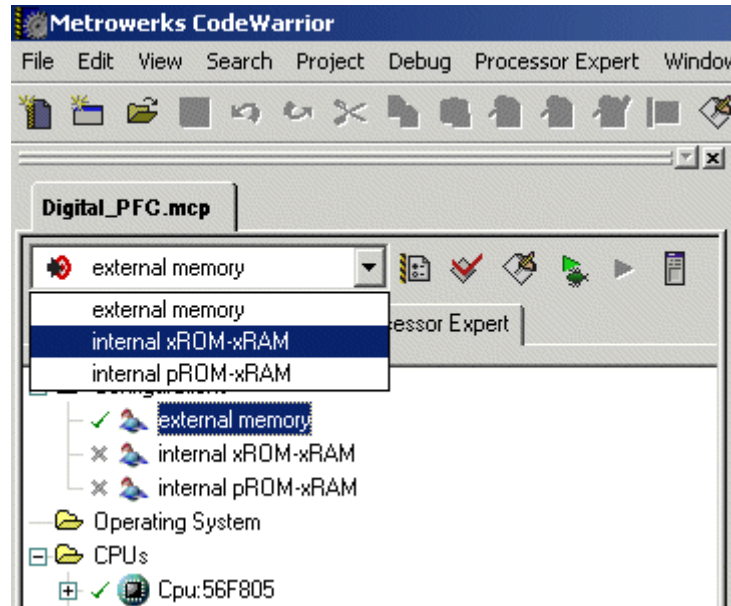


Figure 3-1 Target Build Selection

The project may now be built by executing the *Make* command, as shown in [Figure 3-2](#). This will build and link the Digital PFC Application and all needed CodeWarrior and Processor Expert libraries.

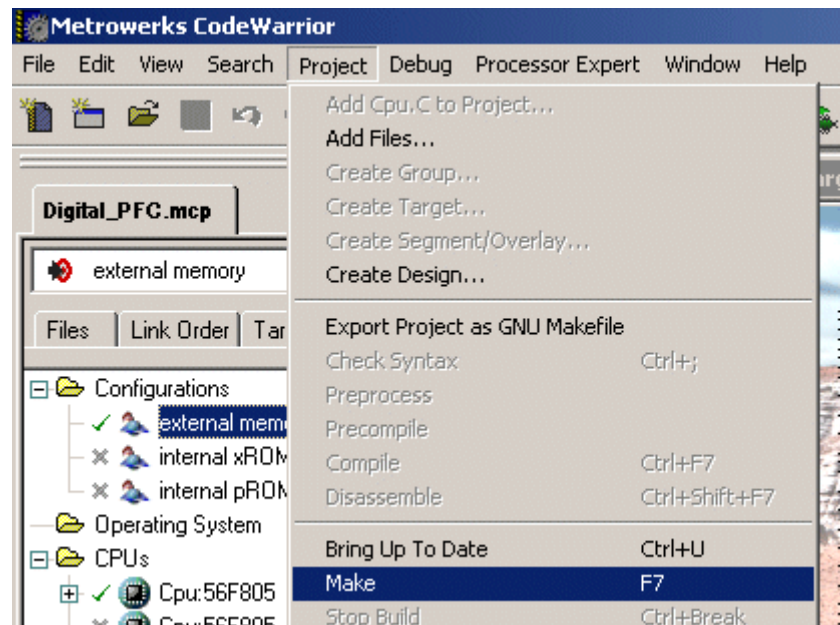


Figure 3-2 Execute *Make* Command

For more information about these commands, see:

<...>\CodeWarrior Manuals\PDF\Targeting_56800.pdf

4. Projects Files

The Digital PFC application is composed of the following files:

- ...**Project Directory**\“**Project File Name**”.mcp, application project file
- ...**Project Directory**\“**Project File Name**”.pe, Processor Expert software file
- ...**Project Directory**\“**Project File Name**”.G_C, Processor Expert software file
- ...**Project Directory**\“**Project File Name**”.dsk, Processor Expert software file
- ...**Project Directory**\bin*.xMAP, map file
- ...**Project Directory**\bin*.elf standard binary file
- ...**Project Directory**\startup*.c, *.h, *.asm, initialization files
- ...**Project Directory**\Code\adcPrimary.*, files generated by the PE for *adcPrimary* bean
- ...**Project Directory**\Code\PC_M1.*, files generated by the PE for *PC_M1* bean
- ...**Project Directory**\Code\tiAux.*, files generated by the PE for *tiAux* bean
- ...**Project Directory**\Code\tmrD2.*, files generated by the PE for *tmrD2* bean
- ...**Project Directory**\Code\Cpu.*, files generated by the PE for the CPU used
- ...**Project Directory**\Code\Events.*, files generated by the PE for events

- ...**Project Directory**\Code**PE_Const.***, PE internal definitions of the constants
- ...**Project Directory**\Code**PE_Error.***, PE internal definitions of the error constants
- ...**Project Directory**\Code**PE_Types.***, PE internal definitions of the types
- ...**Project Directory**\Code**PESL.***, configuration file for PESL library
- ...**Project Directory**\Code**Vectors.***, definitions of the interrupt vectors

5. Execute

To execute the Digital PFC Application, select the *Project/Debug* command in the CodeWarrior IDE, followed by the *Run* command. For more help with these commands, refer to the CodeWarrior tutorial documentation in the following file, located in the CodeWarrior installation directory:

<...>\CodeWarrior Manuals\PDF\Targeting_56800.pdf

If the Flash target is selected, CodeWarrior will automatically program the device's internal Flash with the executable generated during *Build*. If the External RAM target is selected, the executable will be loaded to off-chip RAM.

Once Flash has been programmed with the executable, the EVM target system may be run in a stand-alone mode from Flash. To do this, set the JG5 jumper in the 1-2 configuration to disable the parallel port, and press the RESET button.

To enable the PFC conversion, set the RUN/STOP switch to the RUN position. If this switch was in the RUN position before the application started, move it to the STOP position first, then back to the RUN position. The USER LED should light continuously when the PFC conversion is enabled. To disable the PFC conversion, move the RUN/STOP switch to the STOP position, causing the USER LED to blink again.



How to Reach Us:

Home Page:

www.freescale.com

E-mail:

support@freescale.com

USA/Europe or Locations Not Listed:

Freescale Semiconductor
Technical Information Center, CH370
1300 N. Alma School Road
Chandler, Arizona 85224
+1-800-521-6274 or +1-480-768-2130
support@freescale.com

Europe, Middle East, and Africa:

Freescale Halbleiter Deutschland GmbH
Technical Information Center
Schatzbogen 7
81829 Muenchen, Germany
+44 1296 380 456 (English)
+46 8 52200080 (English)
+49 89 92103 559 (German)
+33 1 69 35 48 48 (French)
support@freescale.com

Japan:

Freescale Semiconductor Japan Ltd.
Headquarters
ARCO Tower 15F
1-8-1, Shimo-Meguro, Meguro-ku,
Tokyo 153-0064, Japan
0120 191014 or +81 3 5437 9125
support.japan@freescale.com

Asia/Pacific:

Freescale Semiconductor Hong Kong Ltd.
Technical Information Center
2 Dai King Street
Tai Po Industrial Estate
Tai Po, N.T., Hong Kong
+800 2666 8080
support.asia@freescale.com

For Literature Requests Only:

Freescale Semiconductor Literature Distribution Center
P.O. Box 5405
Denver, Colorado 80217
1-800-441-2447 or 303-675-2140
Fax: 303-675-2150
LDCForFreescaleSemiconductor@hibbertgroup.com

Information in this document is provided solely to enable system and software implementers to use Freescale Semiconductor products. There are no express or implied copyright licenses granted hereunder to design or fabricate any integrated circuits or integrated circuits based on the information in this document.

Freescale Semiconductor reserves the right to make changes without further notice to any products herein. Freescale Semiconductor makes no warranty, representation or guarantee regarding the suitability of its products for any particular purpose, nor does Freescale Semiconductor assume any liability arising out of the application or use of any product or circuit, and specifically disclaims any and all liability, including without limitation consequential or incidental damages. "Typical" parameters that may be provided in Freescale Semiconductor data sheets and/or specifications can and do vary in different applications and actual performance may vary over time. All operating parameters, including "Typicals", must be validated for each customer application by customer's technical experts. Freescale Semiconductor does not convey any license under its patent rights nor the rights of others. Freescale Semiconductor products are not designed, intended, or authorized for use as components in systems intended for surgical implant into the body, or other applications intended to support or sustain life, or for any other application in which the failure of the Freescale Semiconductor product could create a situation where personal injury or death may occur. Should Buyer purchase or use Freescale Semiconductor products for any such unintended or unauthorized application, Buyer shall indemnify and hold Freescale Semiconductor and its officers, employees, subsidiaries, affiliates, and distributors harmless against all claims, costs, damages, and expenses, and reasonable attorney fees arising out of, directly or indirectly, any claim of personal injury or death associated with such unintended or unauthorized use, even if such claim alleges that Freescale Semiconductor was negligent regarding the design or manufacture of the part.



Freescale™ and the Freescale logo are trademarks of Freescale Semiconductor, Inc. All other product or service names are the property of their respective owners. This product incorporates SuperFlash® technology licensed from SST.

© Freescale Semiconductor, Inc. 2003, 2005. All rights reserved.

805DPFCTD
Rev. 0
08/2005