

UM11150

NxH3670 SDK board

Rev. 1 — 20 March 2019

User manual

Document information

| Information | Content |
|-------------|--|
| Keywords | NxH3670, SDK board configuration |
| Abstract | This user manual describes the different user configurations of the NxH3670 SDK board. |



Revision history

Revision history

| Rev | Date | Description |
|-----|----------|-------------|
| v.1 | 20190320 | first issue |

1 Introduction

The NxH3670 SDK board is intended to be used for:

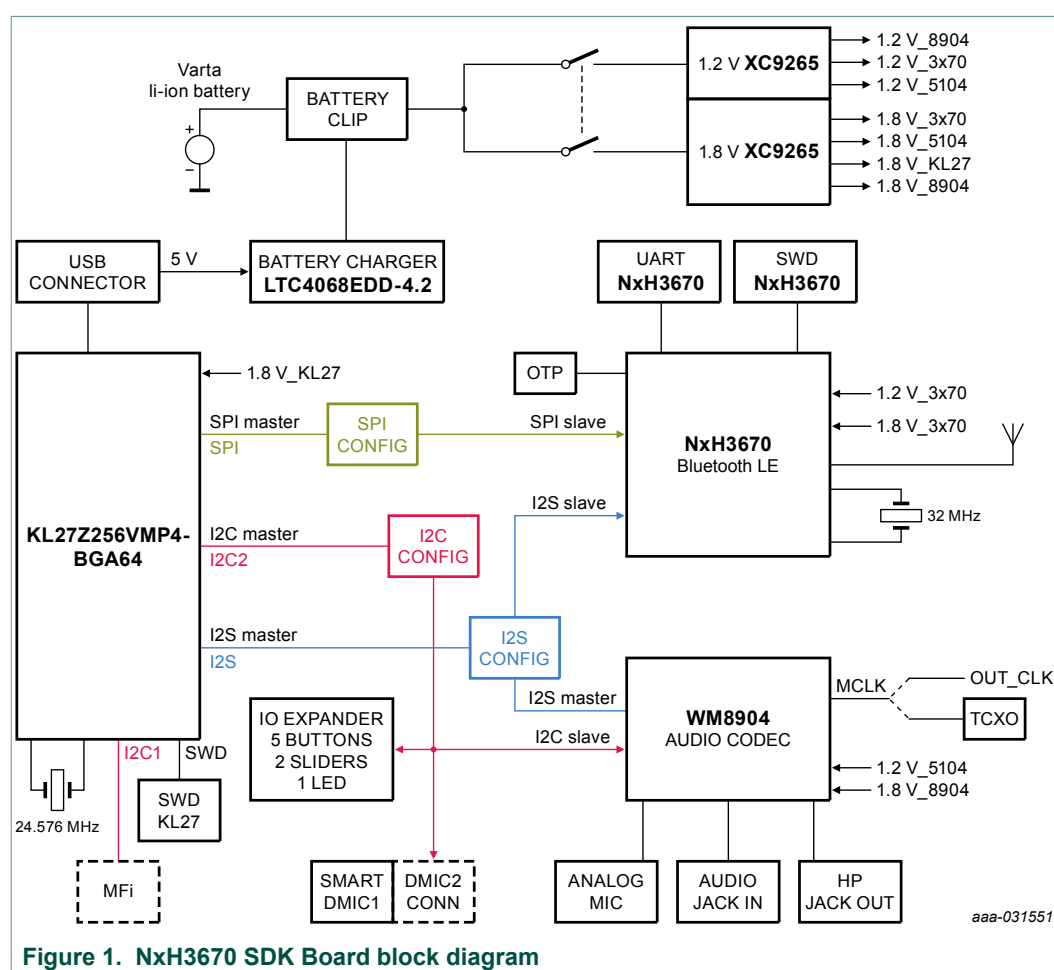
- Demos
- Software development
- Measurements (power consumption and RF)
- Prototyping

Do not use the NxH3670 SDK board for range testing. The NxH3670ADK (12NC 9353 7468 4598) is recommended for range testing.

2 Board overview

2.1 Block diagram

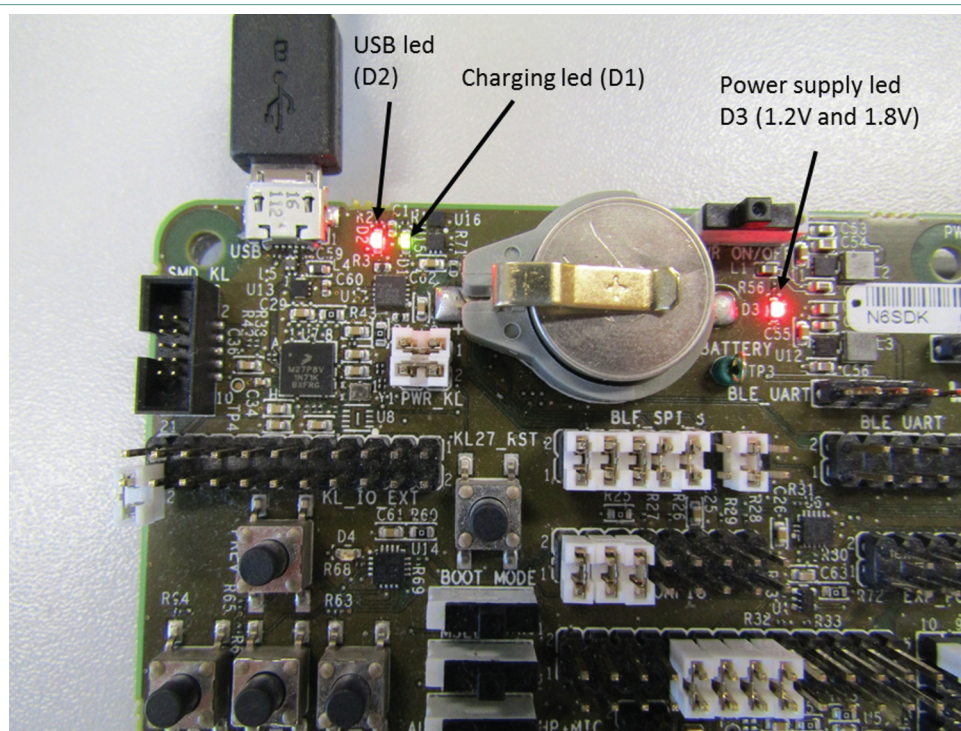
The NxH3670 SDK board is designed to support the dongle and the headset configuration.



2.1.1 Power supply

The NxH3670 SDK board is powered and charged via USB. The 1.2 V and 1.8 V switched mode power supplies are supplied by the battery. A switch is put in between the battery and the switched mode power supplies.

Dedicated jumpers on the 1.2 V and 1.8 V power rail are foreseen for KL27 Host, NxH3670, and Codec. In this way, the individual power figures can easily be observed/measured.



aaa-031552

D1 (green): This LED is on while the battery is charging.

D2 (red): This LED is on when USB power is present.

D3 (red): This LED is on when the 1.2 V and 1.8 V supplies are enabled.

Figure 2. Power supply LEDs

2.1.2 Host controller

The MKL27Z256VMP4 acts as host controller for the NxH3670. To communicate with the NxH3670 SPI slave interface, it has an SPI master interface.

In the dongle configuration, the host controller converts the audio from USB to I²S. The host controller is the I²S master while the NxH3670 is the I²S slave.

In addition, the host controller has an I²C master interface which can be connected to the codec or any external I²C device.

2.1.3 EEPROM

For the NxH3670, the EEPROM is not used.

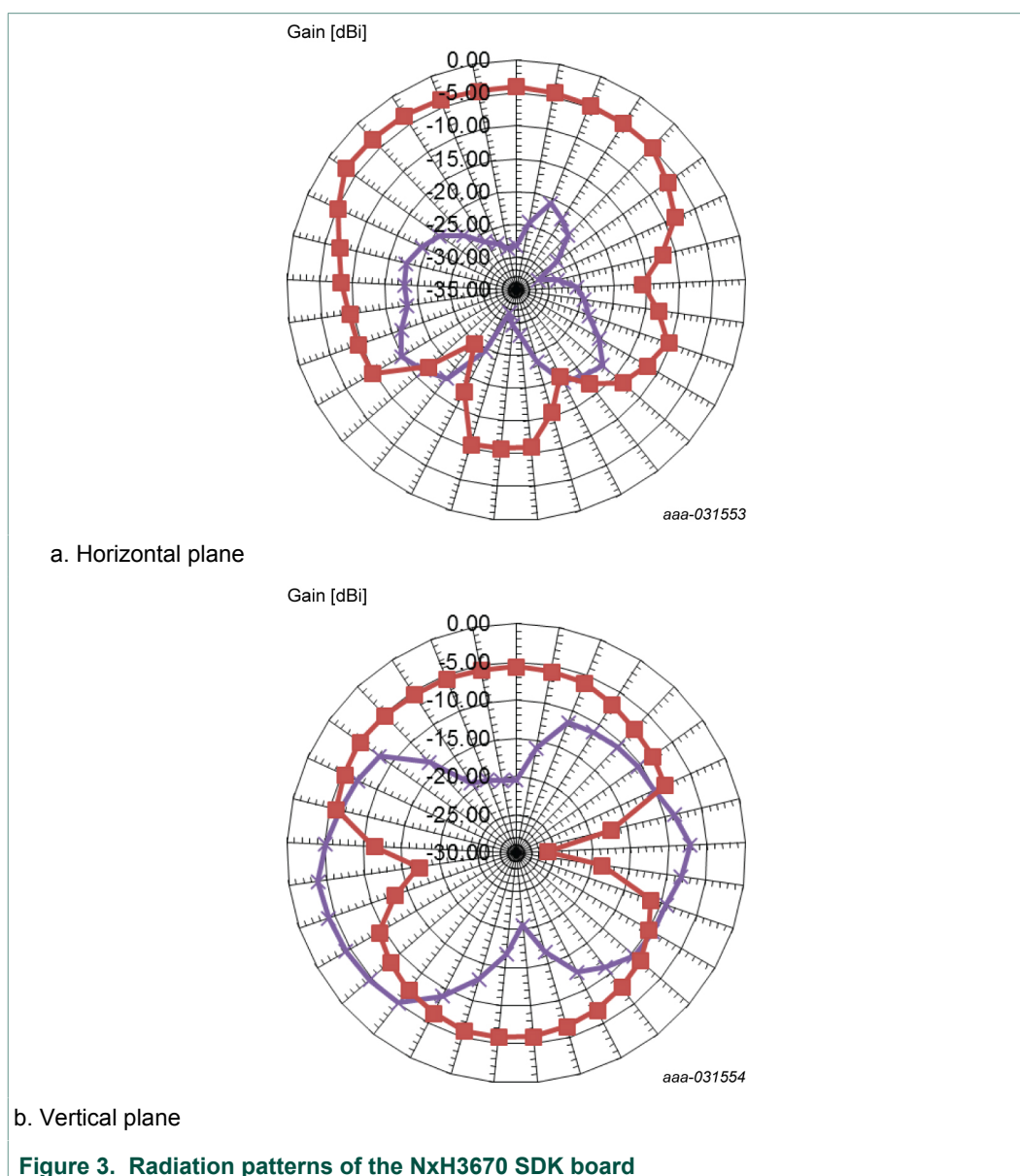
2.1.4 Bluetooth low energy

The NxH3670 is the Bluetooth low energy device. It is a single chip, ultra-low power 2.4 GHz transceiver with embedded MCU, targeted at wireless audio streaming for hearables, wireless headsets, and headphones.

2.1.5 Antenna

The NxH3670 SDK board contains a PCB antenna W3092 of Pulse electronics. It is possible to do RF measurements via cable via J19. In that case, the antenna is disconnected and an adapter cable is required from Murata with part number MXHS83QE3000. This cable can be sourced via the Digikey and Mouser web sites.

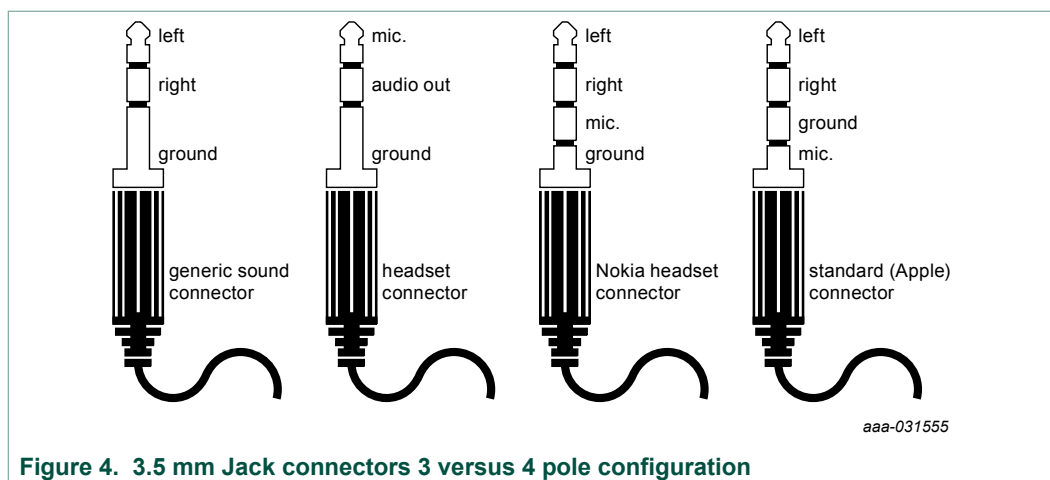
As mentioned the NxH3670 SDK board is not suited to do range testing. However, it is well suited for software development. The radiation pattern contains some major dips which result in a reduced range for some particular orientations (see [Figure 3](#)).



2.1.6 Audio

As audio codec the Wolfson WM8904 is used. The codec is controlled via I²C and can be connected to the MKL27Z256VMP4, or NxH3670 an external device. The I²S port of the codec acts as master and can be connected to the NxH3670 or an external device. An external master clock is provided to the codec.

A 3.5 mm jack for AUDIO_IN and HP+MIC is available on the board. By default, the HP+MIC connector is configured to support a 3-pole audio connector (generic sound connector). The standard 4-pole connector can be supported by adding R19 and removing R20.



2.1.7 Clocks

Three reference clocks used on the board:

- 24.576 MHz crystal connected with the MKL27Z256VMP4
- 32 MHz crystal connected with the NxH3670
- 12.288 MHz TCXO for the codec

It is possible to route via J10 an alternative MCLK (e.g. coming from KL27) to the codec.

2.1.8 Serial wire debug (SWD)

A serial wire debug interface is foreseen for the MKL27Z256VMP4. As debugger the LPC-Link2 is provided.

2.1.9 UART

For debug purposes UART interfaces are available on the KL27 and NxH3670.

If the KL27 UART0 is available on PTA1/2 and UART2 on PTE22/23, the UART of the NxH3670 can be routed to the KL27 or to a pin header via J21. Additionally, it is possible to connect the UART pins to the serial expansion interface (J3) of the LPC link 2 board. In this case, an SDK extender board must be added as indicated in below picture. The SDK extender board contains the required level shifters.

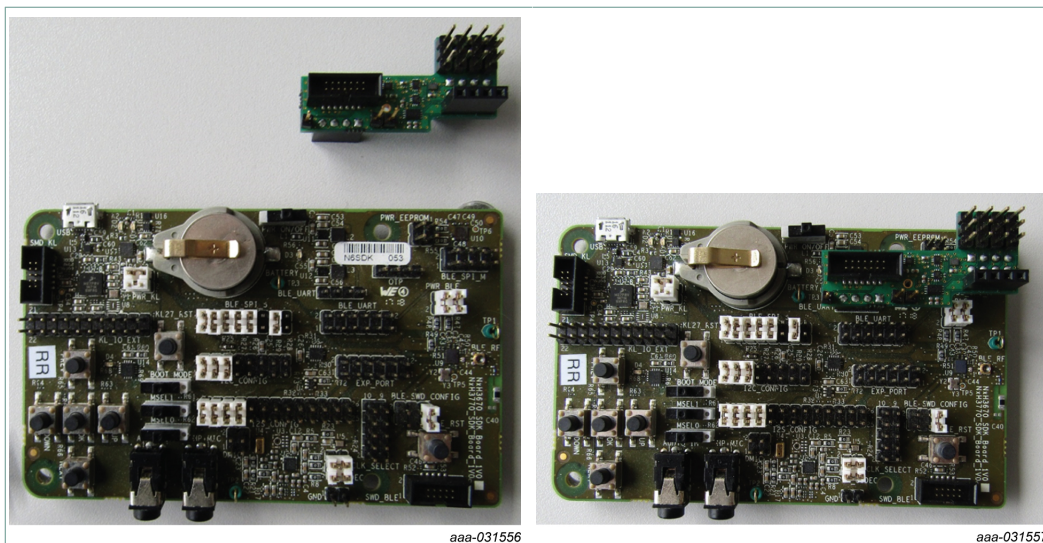


Figure 5. NxH3670 SDK board with SDK extender board

A 14-pin flat cable must be connected between the LPC Link2 board and the SDK extender board.

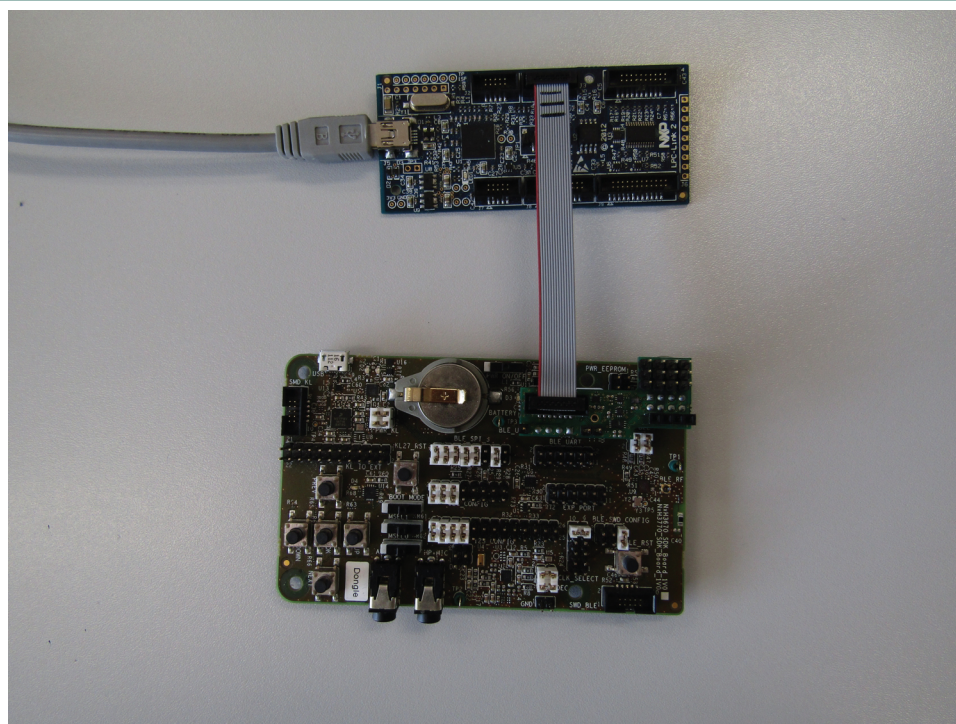


Figure 6. NxH3670 SDK Board with SDK extender board

2.2 Schematic

The schematic is available as a dedicated document. The standard delivery is in pdf format. Design files in Orcad format are available on request.

2.3 Component placement

Figure 7 shows the indication of the most important components of the board.

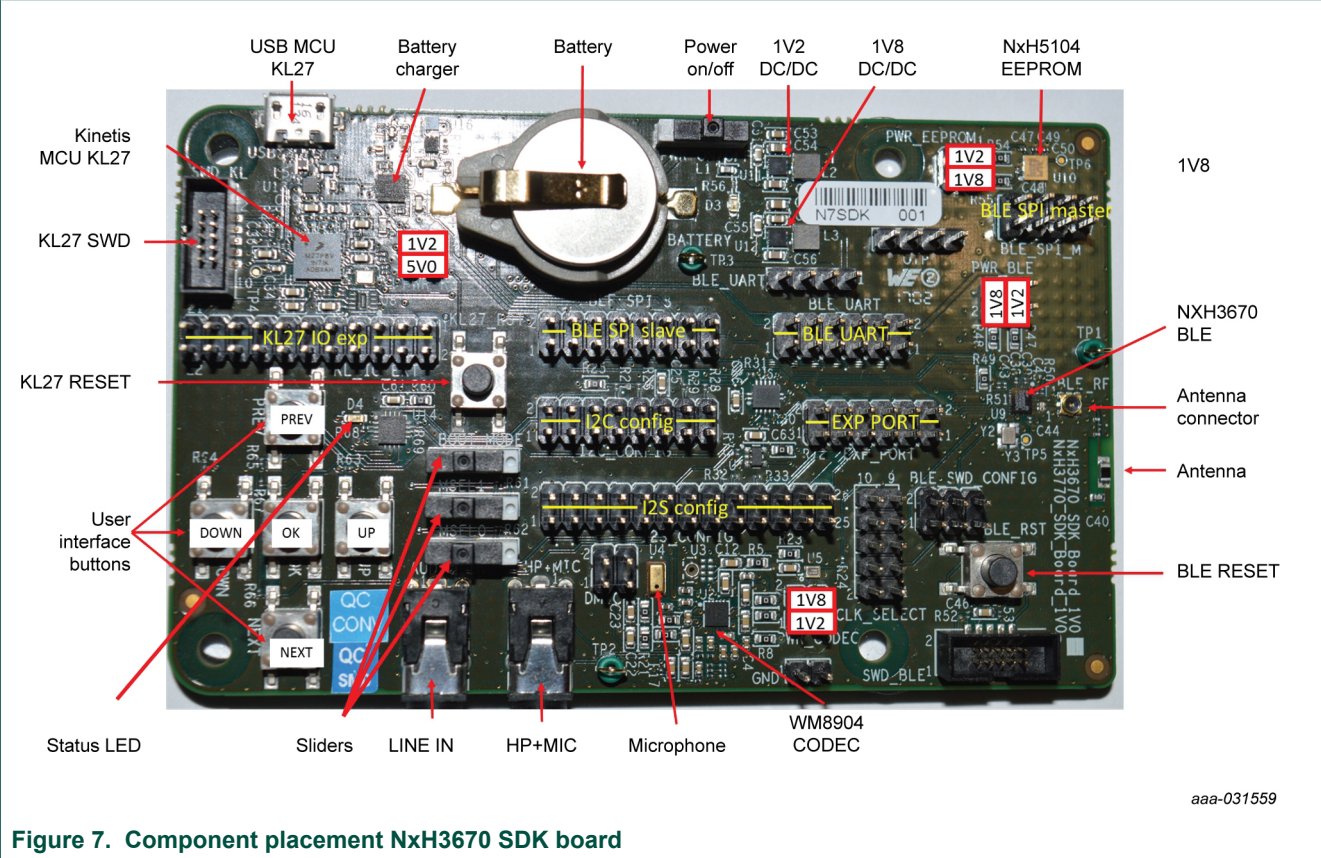


Figure 7. Component placement NxH3670 SDK board

3 Dongle configuration

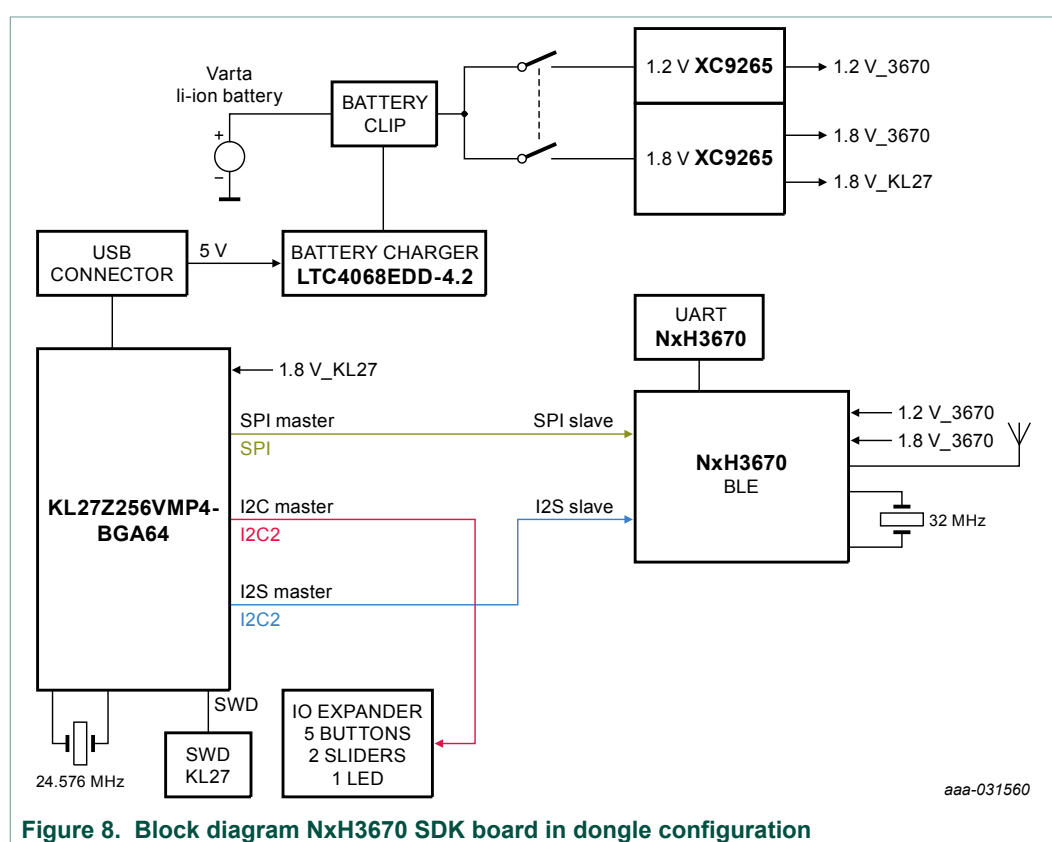
3.1 Block diagram

The dongle application is using the KL27 as host controller. The KL27 has a SPI master interface to control the NxH3670 and an I²S master interface for the audio communication with NxH3670.

A USB interface is available on the KL27 to connect with an external host device.

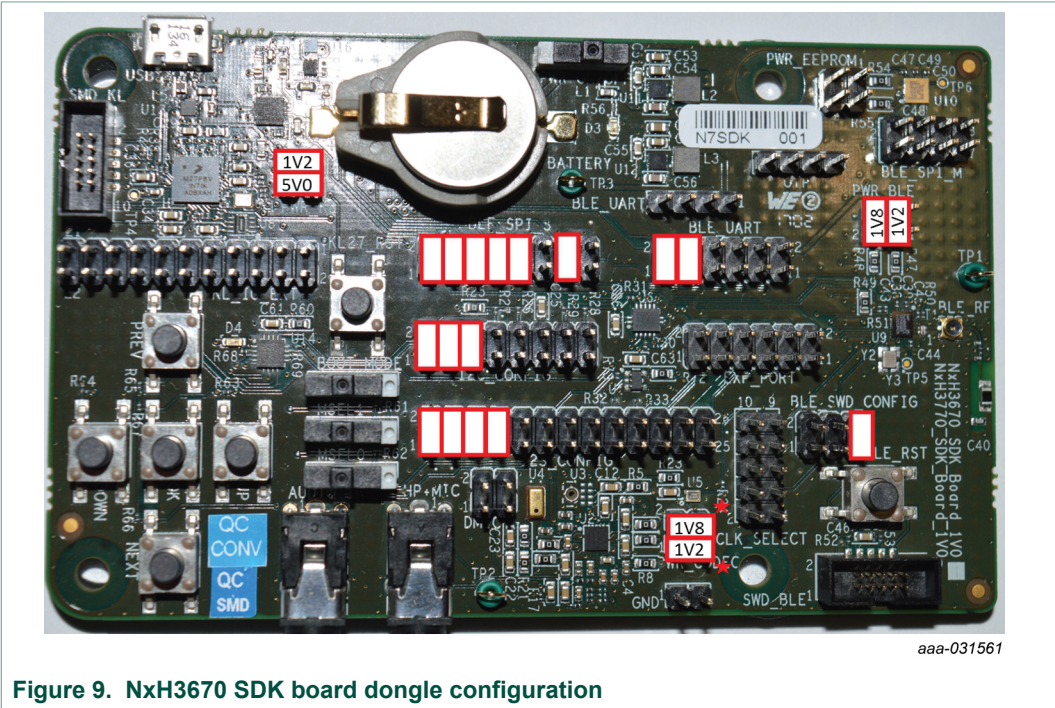
An optional I²C interface is available on the KL27 for buttons, sliders, or LEDs.

The SWM mapping of the NxH3670 is as configuration A in the data sheet.



3.2 Board configuration

Below the jumper configuration of the SDK board in dongle mode. The codec is supplied as well while it is not used because it is connected to I²C together with the IO expander. Without supplying the codec, the I²C pins of the codec, and so also the I²C interface, is unstable.



4 Configuration

The headset application is using the same KL27 host controller as the dongle. The host controller has a SPI master interface to control the NxH3670 and an I²C interface to control the codec and user interface.

The I²S audio from the codec is connected with the NxH3670. The codec is the I²S master.

4.1 Block diagram

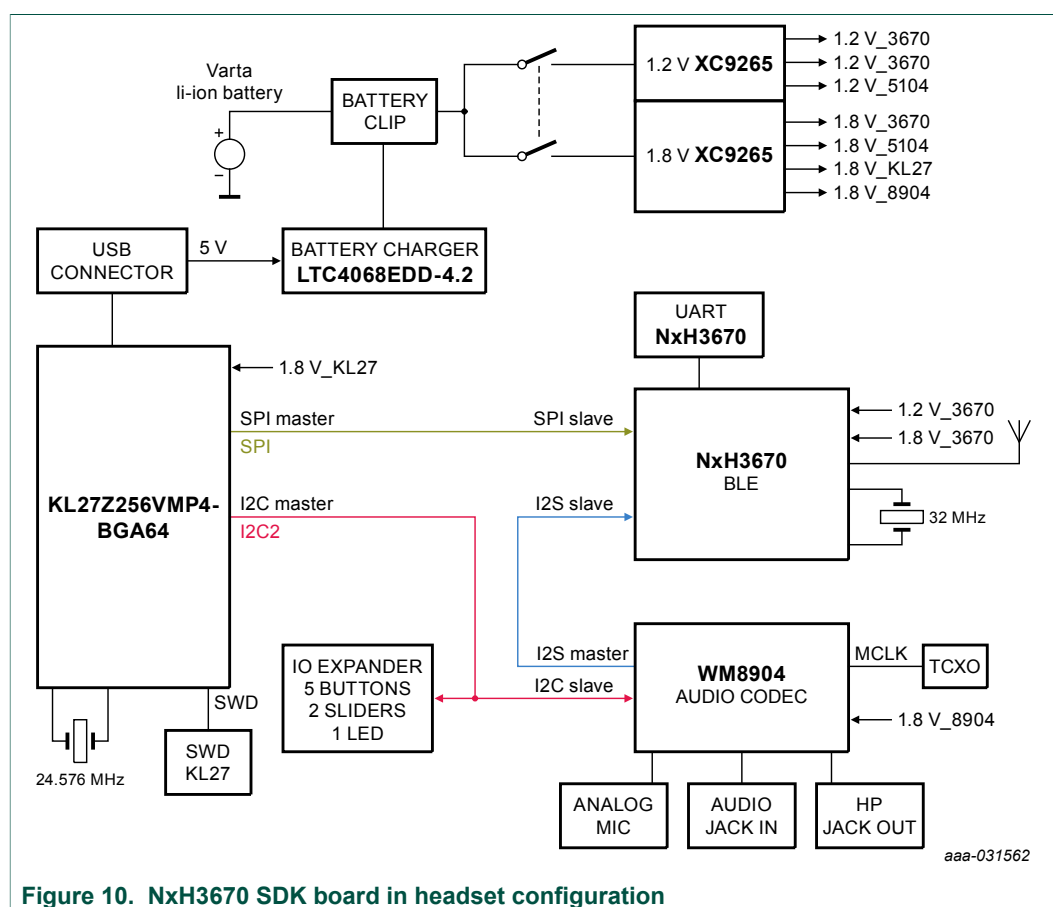
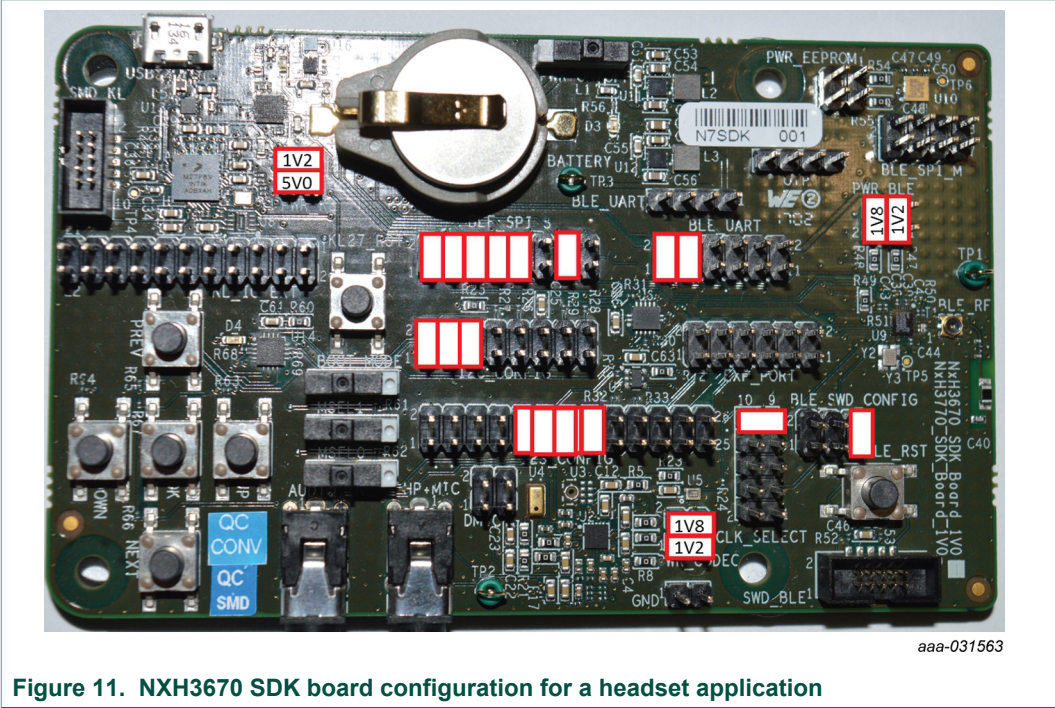


Figure 10. NxH3670 SDK board in headset configuration

4.2 Board configuration

Below the jumper settings for the NxH3670 SDK board in headset configuration.



5 Known limitations

| | |
|---|---|
| Audio artifacts while changing volume | Audio artifacts can be discerned when changing the volume on the SDK board using both Windows OS and Mac OS. The volume management in the Wolfson codec WM8904 causes this issue. |
| 180° phase shift on audio output | Wolfson codec WM8904 introduces a 180° phase shift on its audio output. |
| Multi-path crosstalk | Due to multi-path crosstalk in the Wolfson codec WM8904, there is signal leakage from the forward channel into the backchannel. More information can be found in the data sheet of the Wolfson codec WM8904. |
| USB suspend not available | The USB suspend feature cannot be tested on the SDK board as delivered. It can be tested on the ADK board though. |
| Unstable power supply upon low battery voltage | When the battery voltage is low (e.g. battery almost drained), the onboard supply circuits are unable to output a stable voltage on the 1.2 V and 1.8 V lines. This issue in turn causes undefined behavior on the KL27 and the NxH3670 ICs. This limitation does not apply for the ADK Board, as it features a PMIC. |

6 References

- [1] NxH3670 SDK board schematic
- [2] NxH3670 SDK board layout

7 Legal information

7.1 Definitions

Draft — The document is a draft version only. The content is still under internal review and subject to formal approval, which may result in modifications or additions. NXP Semiconductors does not give any representations or warranties as to the accuracy or completeness of information included herein and shall have no liability for the consequences of use of such information.

7.2 Disclaimers

Limited warranty and liability — Information in this document is believed to be accurate and reliable. However, NXP Semiconductors does not give any representations or warranties, expressed or implied, as to the accuracy or completeness of such information and shall have no liability for the consequences of use of such information. NXP Semiconductors takes no responsibility for the content in this document if provided by an information source outside of NXP Semiconductors. In no event shall NXP Semiconductors be liable for any indirect, incidental, punitive, special or consequential damages (including - without limitation - lost profits, lost savings, business interruption, costs related to the removal or replacement of any products or rework charges) whether or not such damages are based on tort (including negligence), warranty, breach of contract or any other legal theory. Notwithstanding any damages that customer might incur for any reason whatsoever, NXP Semiconductors' aggregate and cumulative liability towards customer for the products described herein shall be limited in accordance with the Terms and conditions of commercial sale of NXP Semiconductors.

Right to make changes — NXP Semiconductors reserves the right to make changes to information published in this document, including without limitation specifications and product descriptions, at any time and without notice. This document supersedes and replaces all information supplied prior to the publication hereof.

Suitability for use — NXP Semiconductors products are not designed, authorized or warranted to be suitable for use in life support, life-critical or safety-critical systems or equipment, nor in applications where failure or malfunction of an NXP Semiconductors product can reasonably be expected to result in personal injury, death or severe property or environmental damage. NXP Semiconductors and its suppliers accept no liability for inclusion and/or use of NXP Semiconductors products in such equipment or applications and therefore such inclusion and/or use is at the customer's own risk.

Applications — Applications that are described herein for any of these products are for illustrative purposes only. NXP Semiconductors makes no representation or warranty that such applications will be suitable for the specified use without further testing or modification. Customers are responsible for the design and operation of their applications and products using NXP Semiconductors products, and NXP Semiconductors accepts no liability for any assistance with applications or customer product design. It is customer's sole responsibility to determine whether the NXP Semiconductors product is suitable and fit for the customer's applications and products planned, as well as for the planned application and use of

customer's third party customer(s). Customers should provide appropriate design and operating safeguards to minimize the risks associated with their applications and products. NXP Semiconductors does not accept any liability related to any default, damage, costs or problem which is based on any weakness or default in the customer's applications or products, or the application or use by customer's third party customer(s). Customer is responsible for doing all necessary testing for the customer's applications and products using NXP Semiconductors products in order to avoid a default of the applications and the products or of the application or use by customer's third party customer(s). NXP does not accept any liability in this respect.

Export control — This document as well as the item(s) described herein may be subject to export control regulations. Export might require a prior authorization from competent authorities.

Evaluation products — This product is provided on an "as is" and "with all faults" basis for evaluation purposes only. NXP Semiconductors, its affiliates and their suppliers expressly disclaim all warranties, whether express, implied or statutory, including but not limited to the implied warranties of non-infringement, merchantability and fitness for a particular purpose. The entire risk as to the quality, or arising out of the use or performance, of this product remains with customer. In no event shall NXP Semiconductors, its affiliates or their suppliers be liable to customer for any special, indirect, consequential, punitive or incidental damages (including without limitation damages for loss of business, business interruption, loss of use, loss of data or information, and the like) arising out of the use of or inability to use the product, whether or not based on tort (including negligence), strict liability, breach of contract, breach of warranty or any other theory, even if advised of the possibility of such damages. Notwithstanding any damages that customer might incur for any reason whatsoever (including without limitation, all damages referenced above and all direct or general damages), the entire liability of NXP Semiconductors, its affiliates and their suppliers and customer's exclusive remedy for all of the foregoing shall be limited to actual damages incurred by customer based on reasonable reliance up to the greater of the amount actually paid by customer for the product or five dollars (US\$5.00). The foregoing limitations, exclusions and disclaimers shall apply to the maximum extent permitted by applicable law, even if any remedy fails of its essential purpose.

Translations — A non-English (translated) version of a document is for reference only. The English version shall prevail in case of any discrepancy between the translated and English versions.

Security — While NXP Semiconductors has implemented advanced security features, all products may be subject to unidentified vulnerabilities. Customers are responsible for the design and operation of their applications and products to reduce the effect of these vulnerabilities on customer's applications and products, and NXP Semiconductors accepts no liability for any vulnerability that is discovered. Customers should implement appropriate design and operating safeguards to minimize the risks associated with their applications and products.

7.3 Trademarks

Notice: All referenced brands, product names, service names and trademarks are the property of their respective owners.

Contents

| | | |
|----------|-----------------------------------|-----------|
| 1 | Introduction | 3 |
| 2 | Board overview | 3 |
| 2.1 | Block diagram | 3 |
| 2.1.1 | Power supply | 4 |
| 2.1.2 | Host controller | 4 |
| 2.1.3 | EEPROM | 4 |
| 2.1.4 | Bluetooth low energy | 5 |
| 2.1.5 | Antenna | 5 |
| 2.1.6 | Audio | 6 |
| 2.1.7 | Clocks | 7 |
| 2.1.8 | Serial wire debug (SWD) | 7 |
| 2.1.9 | UART | 7 |
| 2.2 | Schematic | 8 |
| 2.3 | Component placement | 9 |
| 3 | Dongle configuration | 10 |
| 3.1 | Block diagram | 10 |
| 3.2 | Board configuration | 11 |
| 4 | Configuration | 12 |
| 4.1 | Block diagram | 12 |
| 4.2 | Board configuration | 13 |
| 5 | Known limitations | 14 |
| 6 | References | 15 |
| 7 | Legal information | 16 |

Please be aware that important notices concerning this document and the product(s) described herein, have been included in section 'Legal information'.

© NXP B.V. 2019.

All rights reserved.

For more information, please visit: <http://www.nxp.com>

For sales office addresses, please send an email to: salesaddresses@nxp.com

Date of release: 20 March 2019
Document identifier: UM11150