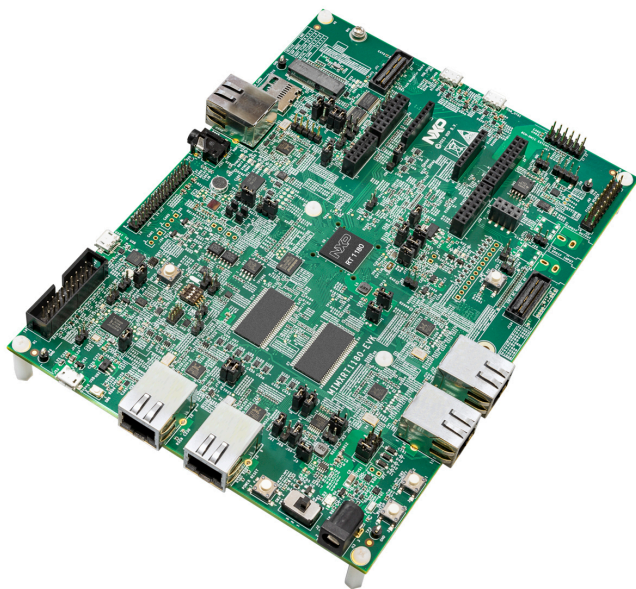




Quick Start Guide

MIMXRT1180-EVK

MIMXRT1180-EVK



Evaluation kit for the i.MX RT1180 MCU
800 MHz Arm® Cortex®-M7 and 240 MHz Cortex®-M33 cores

Get to know the MIMXRT1180-EVK board

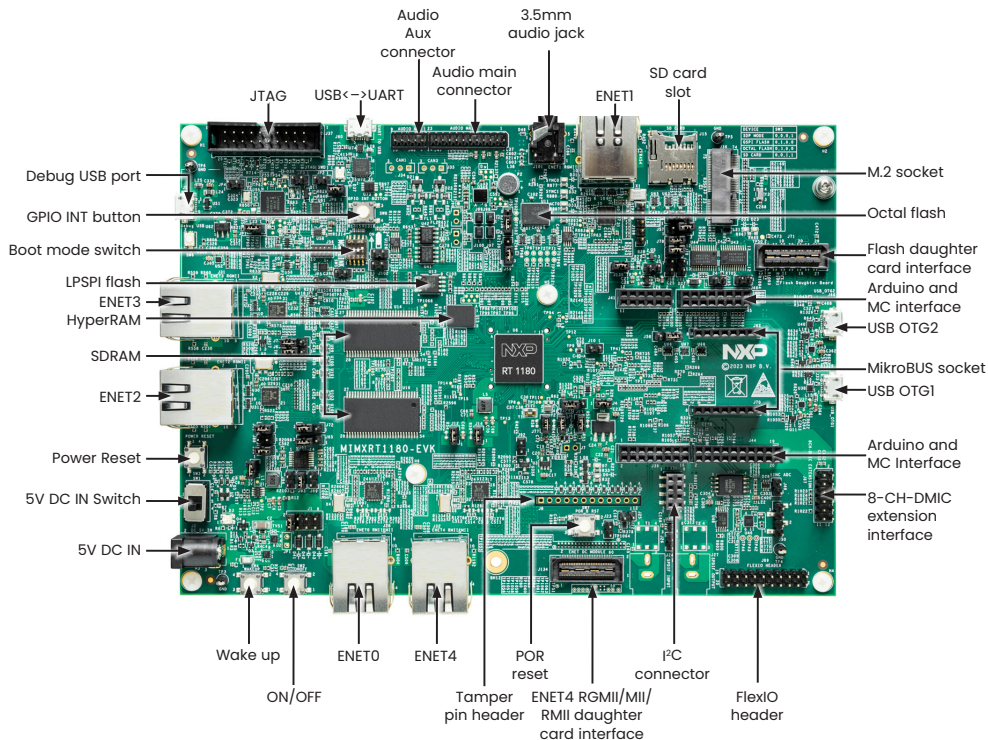


Figure 1: MIMXRT1180-EVK board front callouts

Get to know the MIMXRT1180-EVK board

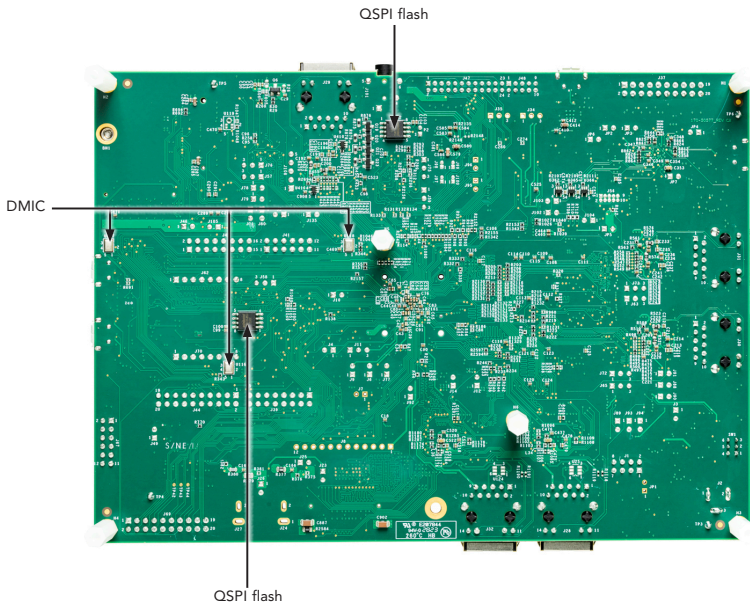


Figure 2: MIMXRT1180-EVK board back callouts

How to get started

The Evaluation kit is shipped with an MIMXRT1180-EVK, a power adapter and a Micro-B USB cable.

1. Plug the power adapter wire into the MIMXRT1180-EVK board 5V DC IN header (J2) and switch on 5V DC IN (SW1).
2. The MIMXRT1180-EVK board comes preprogrammed with a demo that will initiate the LED on the board to flash when plugged in.
3. Explore more out-of-box demos and download software and tools at www.nxp.com/MIMXRT1180-EVK

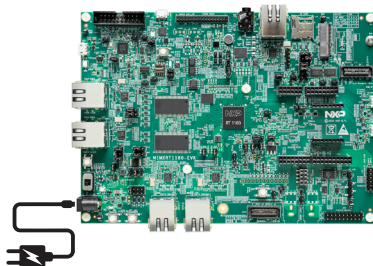


Figure 3: MIMXRT1180-EVK Power Adapter Cable to 5V DC In Header (J2)

Support

Visit www.nxp.com/support for a list of phone numbers within your region.

Warranty

Visit www.nxp.com/warranty for complete warranty information.

[www.nxp.com/product page](http://www.nxp.com/product/page)

NXP, the NXP logo and NXP SECURE CONNECTIONS FOR A SMARTER WORLD are trademarks of NXP B.V. All other product or service names are the property of their respective owners. © 2024 NXP B.V.