



# Setting up the MMA7660FC to do Orientation Detection

by: Laura Salhuana

## ACRONYMS

ODR: Output Data Rate  
 AMSR: Auto Sleep Sample Rate  
 FILT: Debounce filter bits of orientation detection debounce filter  
 PLINT: Portrait/Landscape Interrupt  
 FBINT: Front/Back Interrupt  
 INT: Interrupt  
 TILT: Tilt (0x03) Register  
 INTSU: Interrupt Setup (0x06) Register  
 SR: Sample Rate (0x08) Register

## ABSTRACT

The MMA7660FC has the built in capability to do orientation detection. This feature gives the customer the capability to do applications such as portrait/landscape in mobile phones/PMP/PDAs. The tilt orientation of the device is in 3 dimensions and is identified in its last known static position. This allows a product to set its display orientation appropriately to either portrait or landscape mode or to turn off the display when the device is placed upside down. The sensor provides 6 different positions: left, right, up, down, back, and front, defined in [Table 1](#) and [Figure 1](#). This application note will explain how to configure the MMA7660FC to do orientation detection given the desired sample rate or targeted power consumption.

**Table 1. Orientation Detection Logic of when Interrupt will Occur**

Orientation	Xg	Yg	Zg
Up	$ Z  < 0.8g$ and $ X  >  Y $ and $X < 0$		
Down	$ Z  < 0.8g$ and $ X  >  Y $ and $X > 0$		
Right		$ Z  < 0.8g$ and $ Y  >  X $ and $Y < 0$	
Left		$ Z  < 0.8g$ and $ Y  >  X $ and $Y > 0$	
Back			$Z < -0.25g$
Front			$Z > 0.25g$

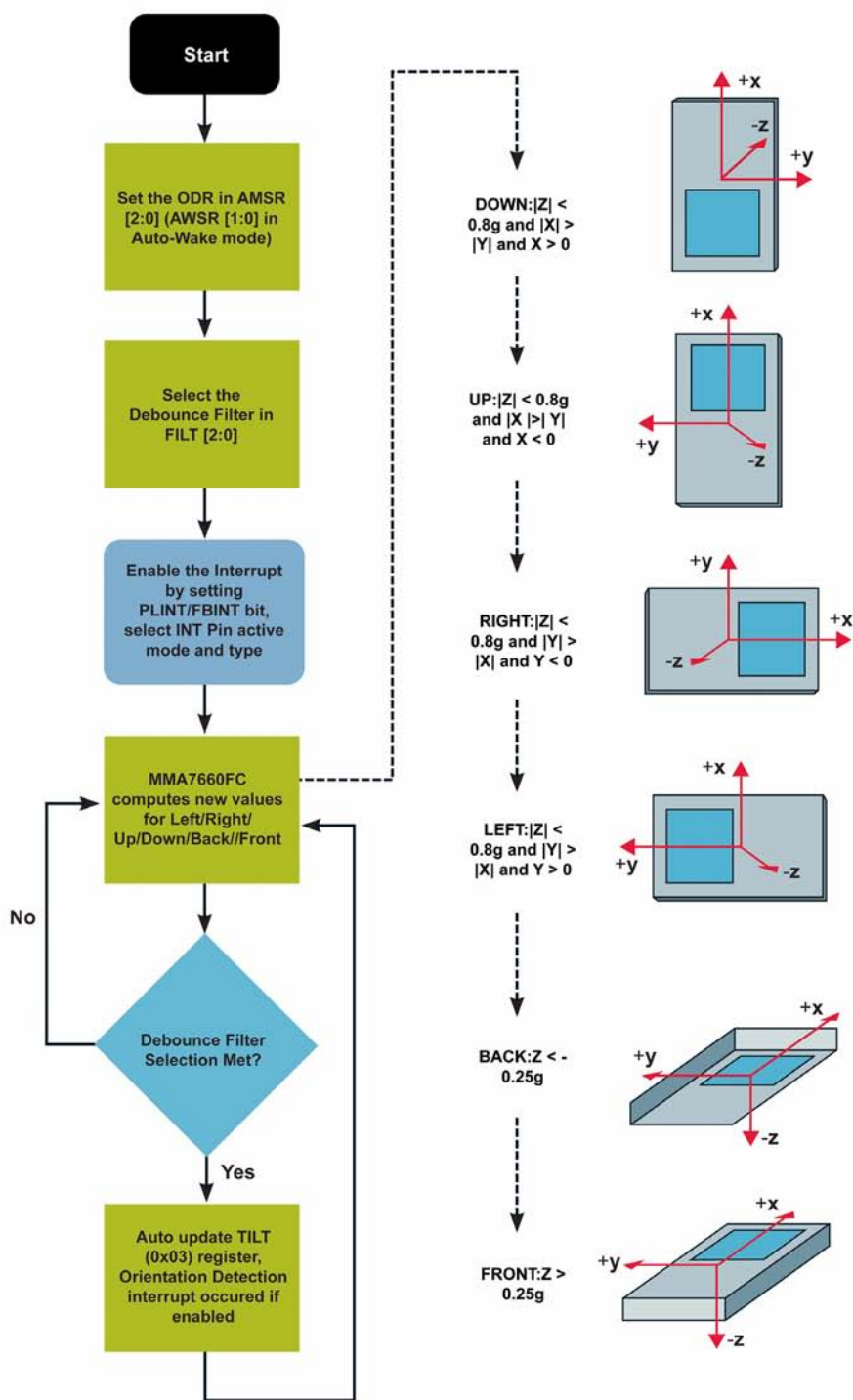


Figure 1. Flow Chart of Orientation Detection Setup and Algorithm

## SAMPLE RATE

The sampling rate can be selected based on the targeted power consumption per the application specification or the desired response rate of the orientation detection. When deciding on the response rate, keep in mind that the faster the sampling rate, the faster the interrupt will occur. The trade-off is that the higher the sampling rate, the higher the power consumption is. The following are the sample rates available in the MMA7660FC sensor with the corresponding approximate power consumption rates.

**NOTE:** These current drain rates were tested in the factory and could vary given PCB board design.

**Table 2. Sample Rate vs. Current Consumption**

Sampling Rate	Current Consumption
Stand By	2.33 $\mu$ A
1 SPS	46.9 $\mu$ A
2 SPS	49.3 $\mu$ A
4 SPS	54 $\mu$ A
8 SPS	65.8 $\mu$ A
16 SPS	89.2 $\mu$ A
32 SPS	133 $\mu$ A
64 SPS	221 $\mu$ A
120 SPS	294 $\mu$ A

## REGISTER OVERVIEW FOR ORIENTATION DETECTION

The following are the registers that will be used and/or configured for orientation detection.

### \$03: Tilt Status (Read only)

#### TILT

D7	D6	D5	D4	D3	D2	D1	D0
X	Alert	X	PoLa[2]	PoLa[1]	PoLa[0]	BaFro[1]	BaFro[0]
0	0	0	0	0	0	0	0

### \$06: Interrupt Setup Register

#### INTSU - Read/Write

D7	D6	D5	D4	D3	D2	D1	D0
X	X	X	X	X	X	PLINT	FBINT
0	0	0	0	0	0	0	0

### \$08: Auto-Wake and Active Mode Portrait/Landscape Output data rates register (Read/Write)

#### SR – Sample Rate Register

D7	D6	D5	D4	D3	D2	D1	D0
FILT[2]	FILT[1]	FILT[0]	X	X	AMSR[2]	AMSR[1]	AMSR[0]
0	0	0	0	0	0	0	0

### Setting up the INTSU [0x06] Register for Orientation Detection Only

Based on the application specification of the MMA7660FC, the sensor can be configured to report back/front interrupts and/or up/down/left/right interrupts. If the application targets to use back and front the FBINT bit must be set to 1. If the back and front interrupt is not desired then set the FBINT bit to 0. If the application targets Up/Down/Left/Right interrupts then the PLINT bit must be set to 1. If the Up/Down/Left/Right interrupt is not desired then set the PLINT bit should be set to 0.

#### INTSU- Read/Write

D7	D6	D5	D4	D3	D2	D1	D0
X	X	X	X	X	X	PLINT	FBINT
0	0	0	0	0	0	0	0

#### FBINT

0:Front/Back position change does not cause an interrupt  
 1:Front/Back position change causes an interrupt

#### PLINT

0:Up/Down/Right/Left position change does not cause an interrupt  
 1:Up/Down/Right/Left position change causes an interrupt

**NOTE:** For further description of the INTSU (0x06) register, please refer to the MMA7660FC Data Sheet.

### Setting up the SR (0x08) register for orientation detection only:

The sample rate must be selected based on target power consumption levels and/or desired response rate for the orientation detection application. To set up the sample rate, the AMSR[3:0] must be configured. Given the selected sample rate a debounce filter setting (FILT[3:0]) must be selected also. Application testing has been done to correlate the sample rate and the recommended debounce filter setting. Refer to [Table 3](#).

#### SR – Read/Write

D7	D6	D5	D4	D3	D2	D1	D0
FILT[2]	FILT[1]	FILT[0]	X	X	AMSR[2]	AMSR[1]	AMSR[0]
0	0	0	0	0	0	0	0

AMSR[2:0]	NAME	DESCRIPTION
000	AMPD	120 Samples/Second Active and Auto-Sleep Mode <b>For portrait/landscape detection:</b> The device takes and averages 32 g-cell measurements every 8.36 ms in Active Mode and Auto-Sleep. The update rate is 120 samples per second. These measurements update the XOUT (0x00), YOUT (0x01), and ZOUT (0x02) registers also.
001	AM64	64 Samples/Second Active and Auto-Sleep Mode <b>For portrait/landscape detection:</b> The device takes and averages 32 g-cell measurements every 15.625 ms in Active Mode and Auto-Sleep. The update rate is 64 samples per second. These measurements update the XOUT (0x00), YOUT (0x01), and ZOUT (0x02) registers also.
010	AM32	32 Samples/Second Active and Auto-Sleep Mode <b>For portrait/landscape detection:</b> The device takes and averages 32 g-cell measurements every 31.25ms in Active Mode and Auto-Sleep. The update rate is 32 samples per second. These measurements update XOUT (0x00), YOUT (0x01), and ZOUT (0x02) registers also.
011	AM16	16 Samples/Second Active and Auto-Sleep Mode <b>For portrait/landscape detection:</b> The device takes and averages 32 g-cell measurements every 62.5ms in Active Mode and Auto-Sleep. The update rate is 16 samples per second. These measurements update the XOUT (0x00), YOUT (0x01), and ZOUT (0x02) registers also.

100	AM8	8 Samples/Second Active and Auto-Sleep Mode <b>For portrait/landscape detection:</b> The device takes and averages 32 g-cell measurements every 125ms in Active Mode and Auto-Sleep. The update rate is 8 samples per second. These measurements update the XOUT (0x00), YOUT (0x01), and ZOUT (0x02) registers also.
101	AM4	4 Samples/Second Active and Auto-Sleep Mode <b>For portrait/landscape detection:</b> The device takes and averages 32 g-cell measurements every 250ms in Active Mode and Auto-Sleep. The update rate is 4 samples per second. These measurements update the XOUT (0x00), YOUT (0x01), and ZOUT (0x02) registers also.
110	AM2	2 Samples/Second Active and Auto-Sleep Mode <b>For portrait/landscape detection:</b> The device takes and averages 32 g-cell measurements every 500ms in Active Mode and Auto-Sleep. The update rate is 2 samples per second. These measurements update the XOUT (0x00), YOUT (0x01), and ZOUT (0x02) registers also.
111	AM1	1 Sample/Second Active and Auto-Sleep Mode <b>For portrait/landscape detection:</b> The device takes and averages 32 g-cell measurements every 1000ms in Active Mode and Auto-Sleep. The update rate is 1 samples per second. These measurements update the XOUT (0x00), YOUT (0x01), and ZOUT (0x02) registers also.

FILT[2:0]	DESCRIPTION
000	Tilt debounce filtering is disabled. The device updates portrait/landscape every reading at the rate set by AMSR[2:0] or AWSR[1:0]
001	2 measurement samples at the rate set by AMSR[2:0] or AWSR[1:0] have to match before the device updates portrait/landscape data in TILT (0x03) register.
010	3 measurement samples at the rate set by AMSR[2:0] or AWSR[1:0] have to match before the device updates portrait/landscape data in TILT (0x03) register.
011	4 measurement samples at the rate set by AMSR[2:0] or AWSR[1:0] have to match before the device updates portrait/landscape data in TILT (0x03) register.
100	5 measurement samples at the rate set by AMSR[2:0] or AWSR[1:0] have to match before the device updates portrait/landscape data in TILT (0x03) register.
101	6 measurement samples at the rate set by AMSR[2:0] or AWSR[1:0] have to match before the device updates portrait/landscape data in TILT (0x03) register.
110	7 measurement samples at the rate set by AMSR[2:0] or AWSR[1:0] have to match before the device updates portrait/landscape data in TILT (0x03) register.
111	8 measurement samples at the rate set by AMSR[2:0] or AWSR[1:0] have to match before the device updates portrait/landscape data in TILT (0x03) register.

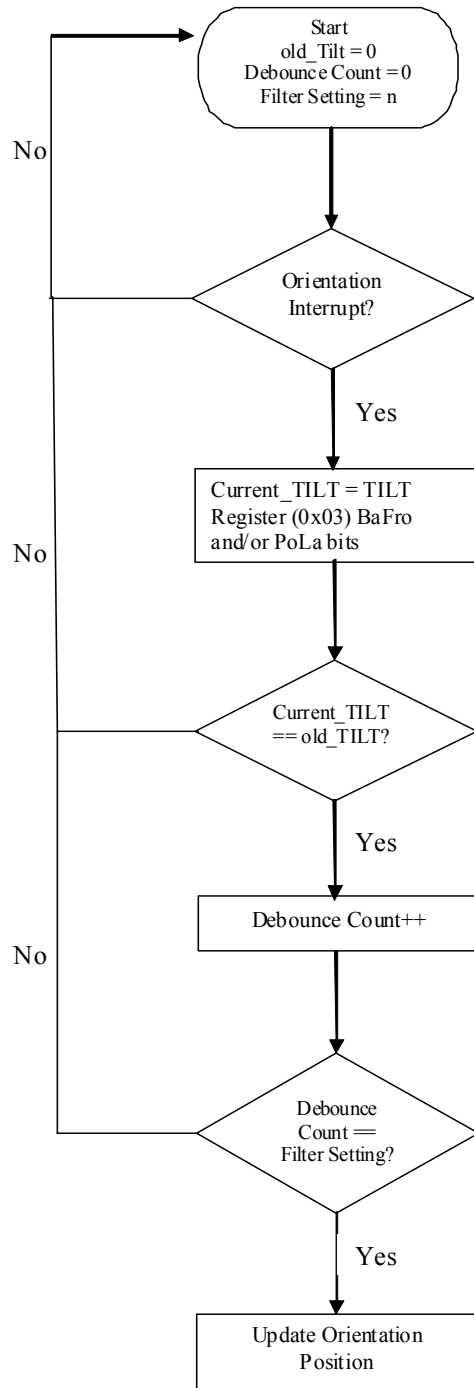
**Table 3. Sample Rate vs. Debounce Filter Table**

Sample Rate	Debounce Filter Setting
1 SPS	4
2 SPS	6
4 SPS	8
8 SPS	8
16 SPS	8
32 SPS	8
64 SPS	External Debounce Filter
120 SPS	External Debounce Filter

**NOTE:** The recommended values were tested on the RD3803MMA7660FC evaluation board. The values may change given the mounting and position of the sensor on the PCB design.

### External Debounce Filter:

When using the MMA7660FC and sample rates higher than 32 SPS an external debounce filter must be added to avoid flickering between positions due to involuntary human movement. The external debounce filter must be added to the application microcontroller. Below is a flow chart and Pseudocode for the debounce filter.



#### PSEUDOCODE:

```

//Configure Orientation Detection Interrupts
FILTER_SETTING = n
If(TILT_Interruption occurs)
    read TILT Register
    if(old_TILT == current_TILT)
        Debounce
    Count++
If(Debounce Count == FILTER_SETTING)
    //orientation = current_TILT
  
```

Figure 2. External Debounce Filter

## HANDLING THE ORIENTATION DETECTION INTERRUPT

When an interrupt occurs, the application must respond and read the TILT (0x03) register. When reading the TILT register the bits of interest are the following POLA[4:2] and BAFRO[1:0]. The interrupt will be cleared when the TILT register is read.

**NOTE:** If the register is read and the Alert bit is high, the register must be read again.

### TILT – Read Only

D7	D6	D5	D4	D3	D2	D1	D0
X	Alert	X	PoLa[2]	PoLa[1]	PoLa[0]	BaFro[1]	BaFro[0]
0	0	0	0	0	0	0	0

#### BaFro[1:0]

00:Unknown condition of front or back  
 01:Front:Equipment is lying on its front  
 10:Back:Equipment is lying on its back

#### Alert

0:Register data is valid  
 1:The register was read at the same time as MMA7660FC was attempting to update the contents. Re-read the register

#### PoLa[2:0]

000:Unknown initial condition of up or down or left or right  
 001:Left:Equipment is in landscape mode to the left  
 010:Right:Equipment is in landscape mode to the right  
 101:Down:Equipment standing vertically in inverted orientation (any markings are the wrong way up)  
 110:Up:Equipment standing vertically in normal orientation (any markings are the right way up)



## **How to Reach Us:**

### **Home Page:**

[www.freescale.com](http://www.freescale.com)

### **Web Support:**

<http://www.freescale.com/support>

### **USA/Europe or Locations Not Listed:**

Freescale Semiconductor, Inc.  
Technical Information Center, EL516  
2100 East Elliot Road  
Tempe, Arizona 85284  
1-800-521-6274 or +1-480-768-2130  
[www.freescale.com/support](http://www.freescale.com/support)

### **Europe, Middle East, and Africa:**

Freescale Halbleiter Deutschland GmbH  
Technical Information Center  
Schatzbogen 7  
81829 Muenchen, Germany  
+44 1296 380 456 (English)  
+46 8 52200080 (English)  
+49 89 92103 559 (German)  
+33 1 69 35 48 48 (French)  
[www.freescale.com/support](http://www.freescale.com/support)

### **Japan:**

Freescale Semiconductor Japan Ltd.  
Headquarters  
ARCO Tower 15F  
1-8-1, Shimo-Meguro, Meguro-ku,  
Tokyo 153-0064  
Japan  
0120 191014 or +81 3 5437 9125  
[support.japan@freescale.com](mailto:support.japan@freescale.com)

### **Asia/Pacific:**

Freescale Semiconductor China Ltd.  
Exchange Building 23F  
No. 118 Jianguo Road  
Chaoyang District  
Beijing 100022  
China  
+86 010 5879 8000  
[support.asia@freescale.com](mailto:support.asia@freescale.com)

### **For Literature Requests Only:**

Freescale Semiconductor Literature Distribution Center  
1-800-441-2447 or +1-303-675-2140  
Fax: +1-303-675-2150  
[LDCForFreescaleSemiconductor@hibbertgroup.com](mailto:LDCForFreescaleSemiconductor@hibbertgroup.com)

Information in this document is provided solely to enable system and software implementers to use Freescale Semiconductor products. There are no express or implied copyright licenses granted hereunder to design or fabricate any integrated circuits or integrated circuits based on the information in this document.

Freescale Semiconductor reserves the right to make changes without further notice to any products herein. Freescale Semiconductor makes no warranty, representation or guarantee regarding the suitability of its products for any particular purpose, nor does Freescale Semiconductor assume any liability arising out of the application or use of any product or circuit, and specifically disclaims any and all liability, including without limitation consequential or incidental damages. "Typical" parameters that may be provided in Freescale Semiconductor data sheets and/or specifications can and do vary in different applications and actual performance may vary over time. All operating parameters, including "Typicals", must be validated for each customer application by customer's technical experts. Freescale Semiconductor does not convey any license under its patent rights nor the rights of others. Freescale Semiconductor products are not designed, intended, or authorized for use as components in systems intended for surgical implant into the body, or other applications intended to support or sustain life, or for any other application in which the failure of the Freescale Semiconductor product could create a situation where personal injury or death may occur. Should Buyer purchase or use Freescale Semiconductor products for any such unintended or unauthorized application, Buyer shall indemnify and hold Freescale Semiconductor and its officers, employees, subsidiaries, affiliates, and distributors harmless against all claims, costs, damages, and expenses, and reasonable attorney fees arising out of, directly or indirectly, any claim of personal injury or death associated with such unintended or unauthorized use, even if such claim alleges that Freescale Semiconductor was negligent regarding the design or manufacture of the part.

Freescale™ and the Freescale logo are trademarks of Freescale Semiconductor, Inc. All other product or service names are the property of their respective owners.

© Freescale Semiconductor, Inc. 2009. All rights reserved.