



Arm9™ microcontroller with CAN and LIN

LPC2919FBD144

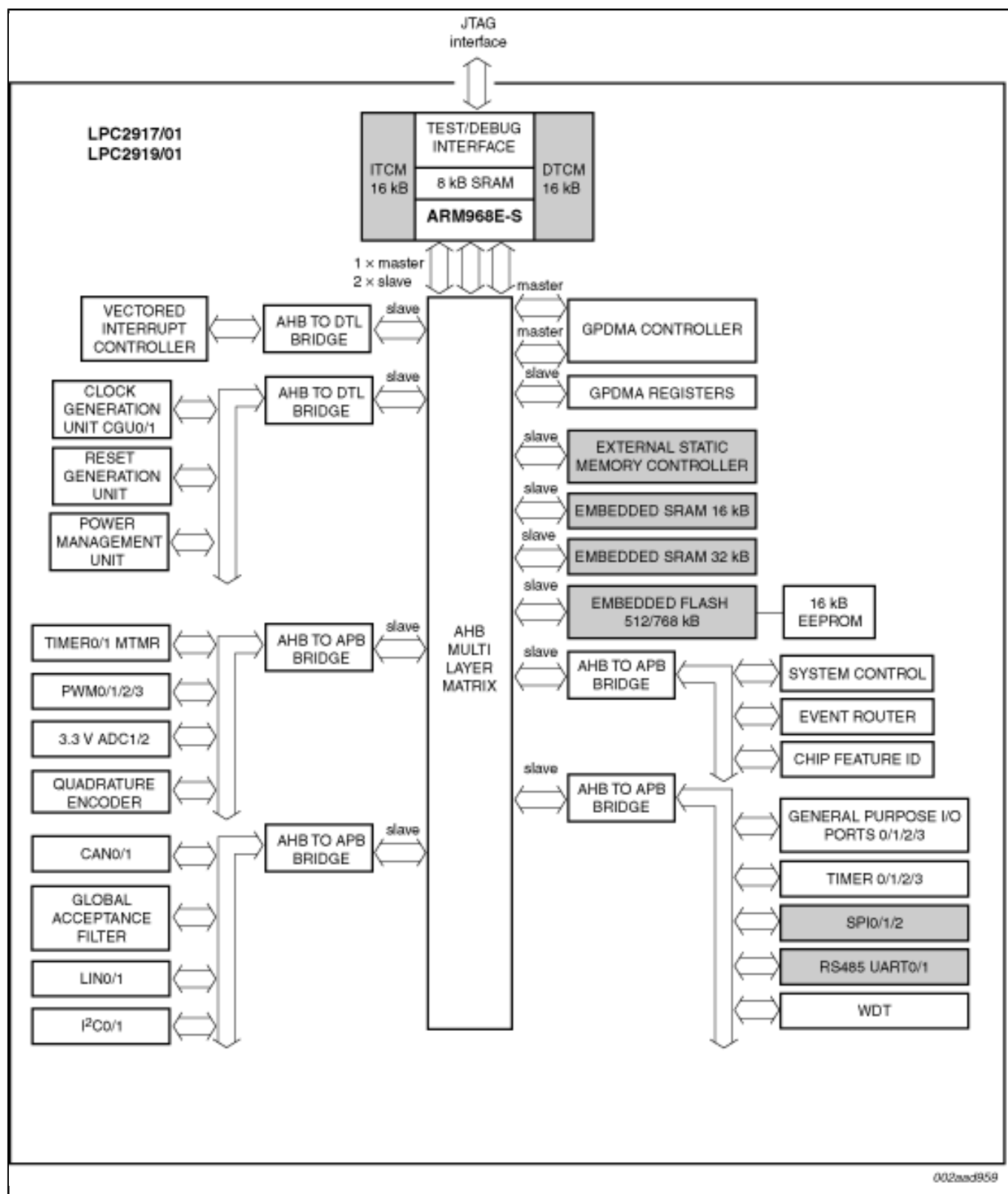
Not Recommended for New Designs

このページでは、新規設計を推奨しない製品に関する情報を掲載しています。

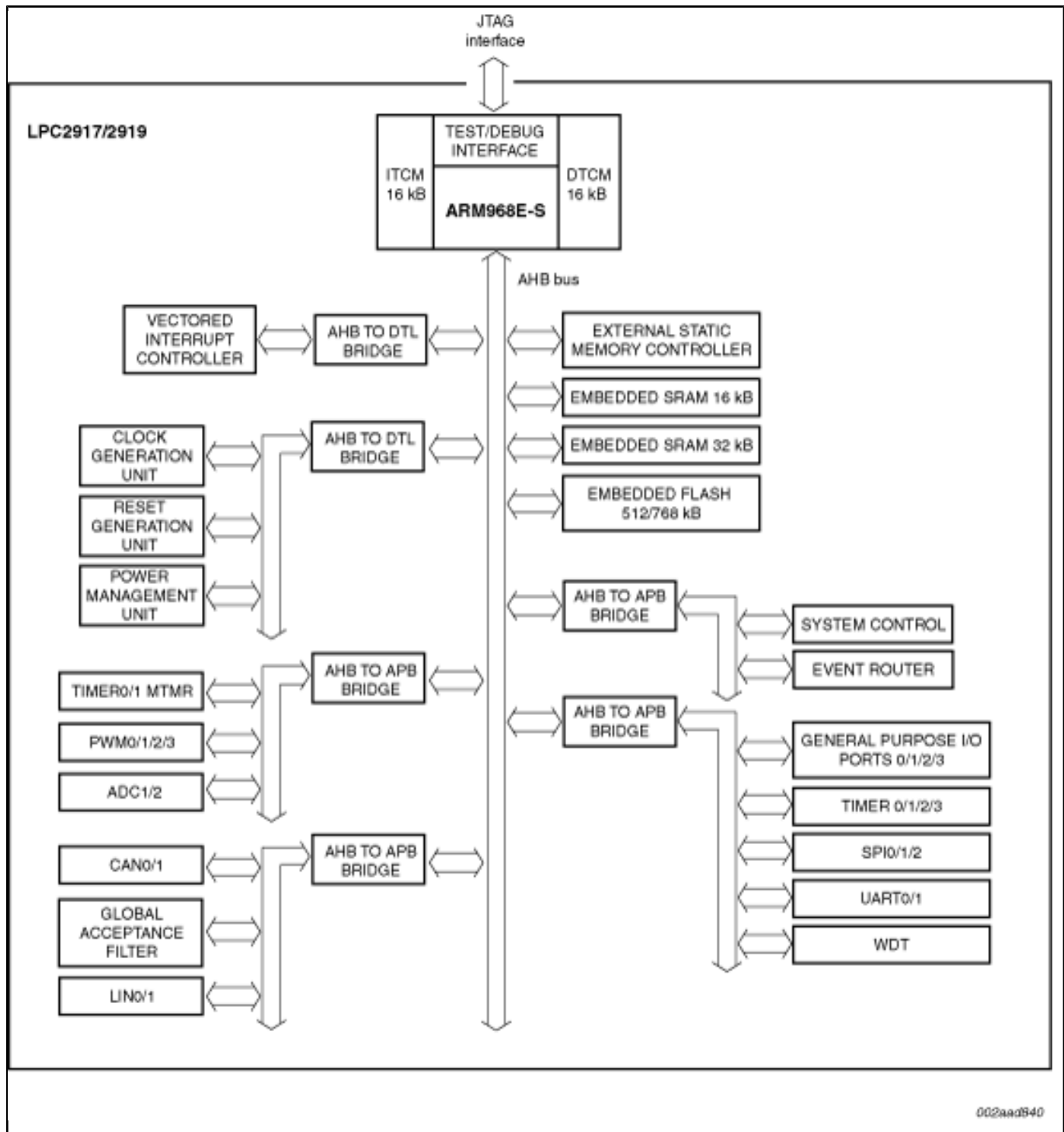
Last Updated: Apr 8, 2022

The LPC2917/2919/01 combine an ARM968E-S CPU core with two integrated TCM blocks operating at frequencies of up to 125 MHz, CAN and LIN, 56 kB SRAM, up to 768 kB flash memory, external memory interface, two 10-bit ADCs, and multiple serial and parallel interfaces in a single chip targeted at consumer, industrial, medical, and communication markets. To optimize system power consumption, the LPC2917/2919/01 has a very flexible Clock Generation Unit (CGU) that provides dynamic clock gating and scaling.

Block diagram: LPC2917FBD144, LPC2919FBD144 Block Diagram



Block diagram: LPC2917FBD144, LPC2919FBD144 Block Diagram



View additional information for [Arm9™ microcontroller with CAN and LIN](#).

Note: The information on this document is subject to change without notice.

www.nxp.com

NXP and the NXP logo are trademarks of NXP B.V. All other product or service names are the property of their respective owners. The related technology may be protected by any or all of patents, copyrights, designs and trade secrets. All rights reserved. © 2025 NXP B.V.